



Bedford Middle School 2019-2020



**Parent Presentation
March 26, 2019**

Principal's Message

5 Essential Goals for Our Middle School

1. School should be a happy and joyful place for students;
2. Students should feel close to the adults in the school;
3. Students should have a sense of belonging;
4. Students should feel that the adults in the building treat each other and students fairly;
5. Students should feel safe at all times – Physically, Emotionally, Intellectually.

These five goals are not a guarantee...they represent a guiding vision for our school community that must be supported by teachers, students and parents!

Principal's Message

Educating the Whole Child

- **Self Advocacy**
- **Organization**
- **Teaching Teams**
- **Academic Success**

Presentation Contents (follow along using these badges)

1

Social and Emotional
Planning

2

Scheduling and Facility
Planning

3

Co Curricular
Programming

4

Safety and Security
Planning

- **Pupil Services Staffing**
 - **6 School Counselors**
 - **5 School Psychologists**
 - **1 Social Worker**
- **Accessing Counseling Staff**
- **RULER Program**
- **Developmental Guidance Curriculum**

- Combined student populations
 - teaming
 - team size
 - class sizes
- Optimized facility usage
- Homeroom
- Lockers
- Pod spaces
- Lunch and recess

2

Scheduling and Facility Planning

- **Core Subjects**

- Science
- Math
- Language Arts
- Social Studies

- **Encore Subjects**

- World Language
- Music
- Physical Education
- Drama
- Art
- Design & Engineering (STEM)
- Health

- **Rotating Double Block**

2

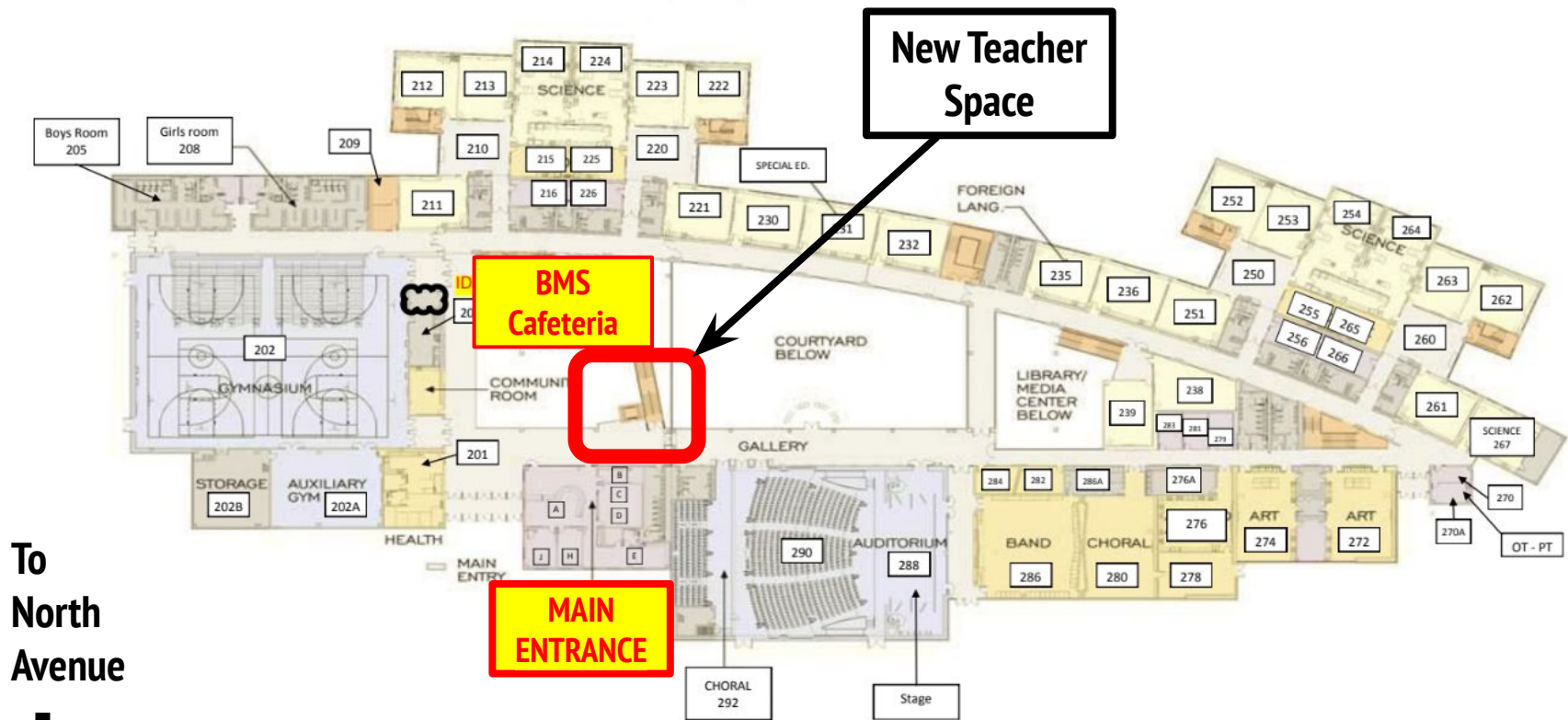
Scheduling and Facility
PlanningExample Rotating
Double Blocks

GRADE 6 MASTER SCHEDULE				
MONDAY	TUESDAY	WEDNESDAY	THURSDAY	
HOMEROOM				
1	CORE - 3	CORE - 5	4	
CORE - 2 CORE - 3	7	4	CORE - 6 CORE - 3	
	1	CORE - 8		
4	CORE - 5	1	CORE - 2	
LUNCH				
CORE - 5	CORE - 6 CORE - 8	CORE - 2	CORE - 5	
CORE - 6		CORE - 6	1	
7	CORE - 2	CORE - 3	7	
CORE - 8	4	7	CORE - 8	8

Space Needs Yet to Be Determined

- 2 resource rooms for Special Education
- 4 offices
 - 1-School Counselor
 - 1-School Psychologist
 - 1-Speech and Language Pathologist
 - 1-Social Worker
- Teacher work areas (preparing lessons, calling parents, responding to emails)

← To Wakeman Athletic Fields



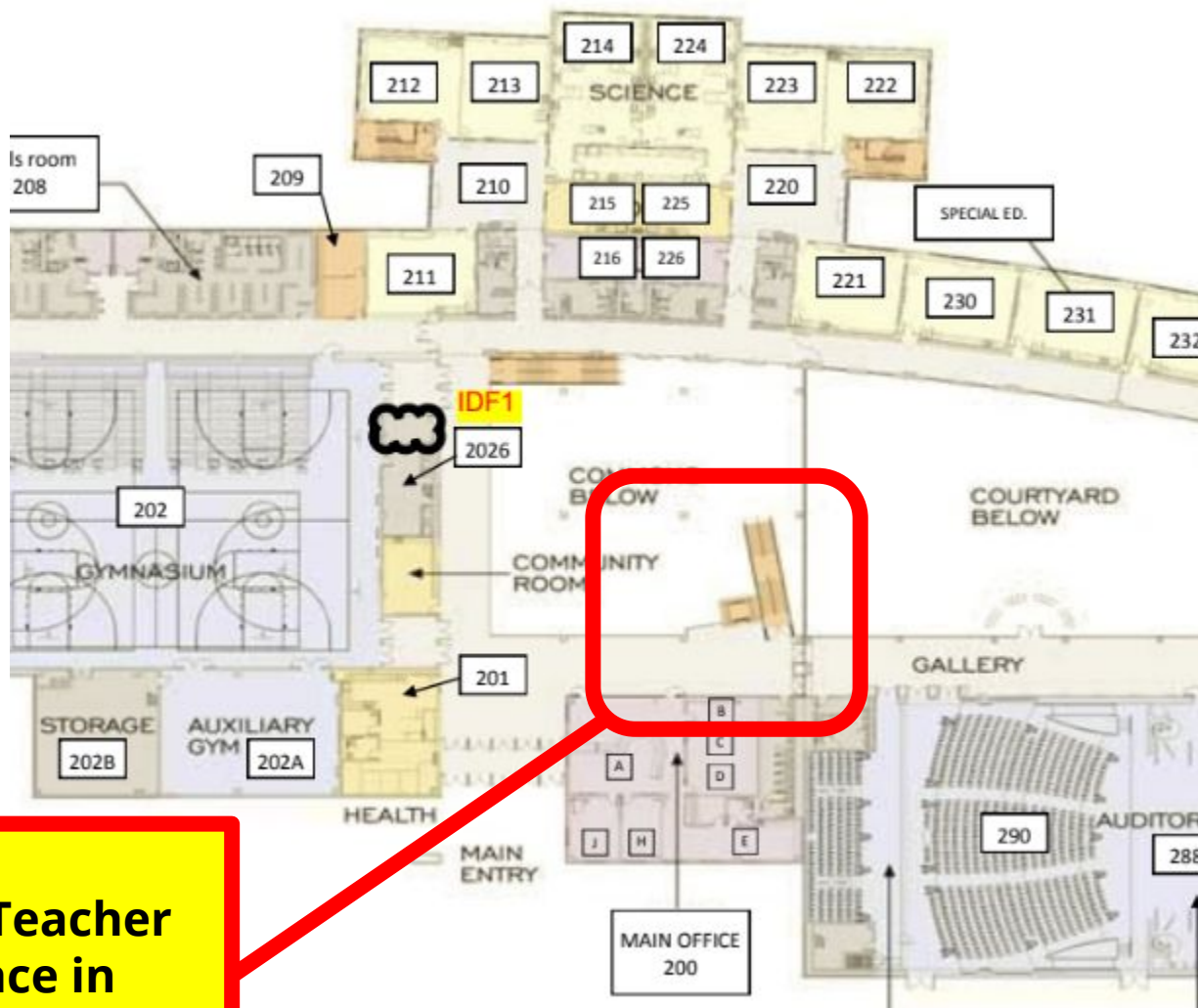
To
North
Avenue



BEDFORD MIDDLE SCHOOL
MAIN LEVEL

To Staples High School →

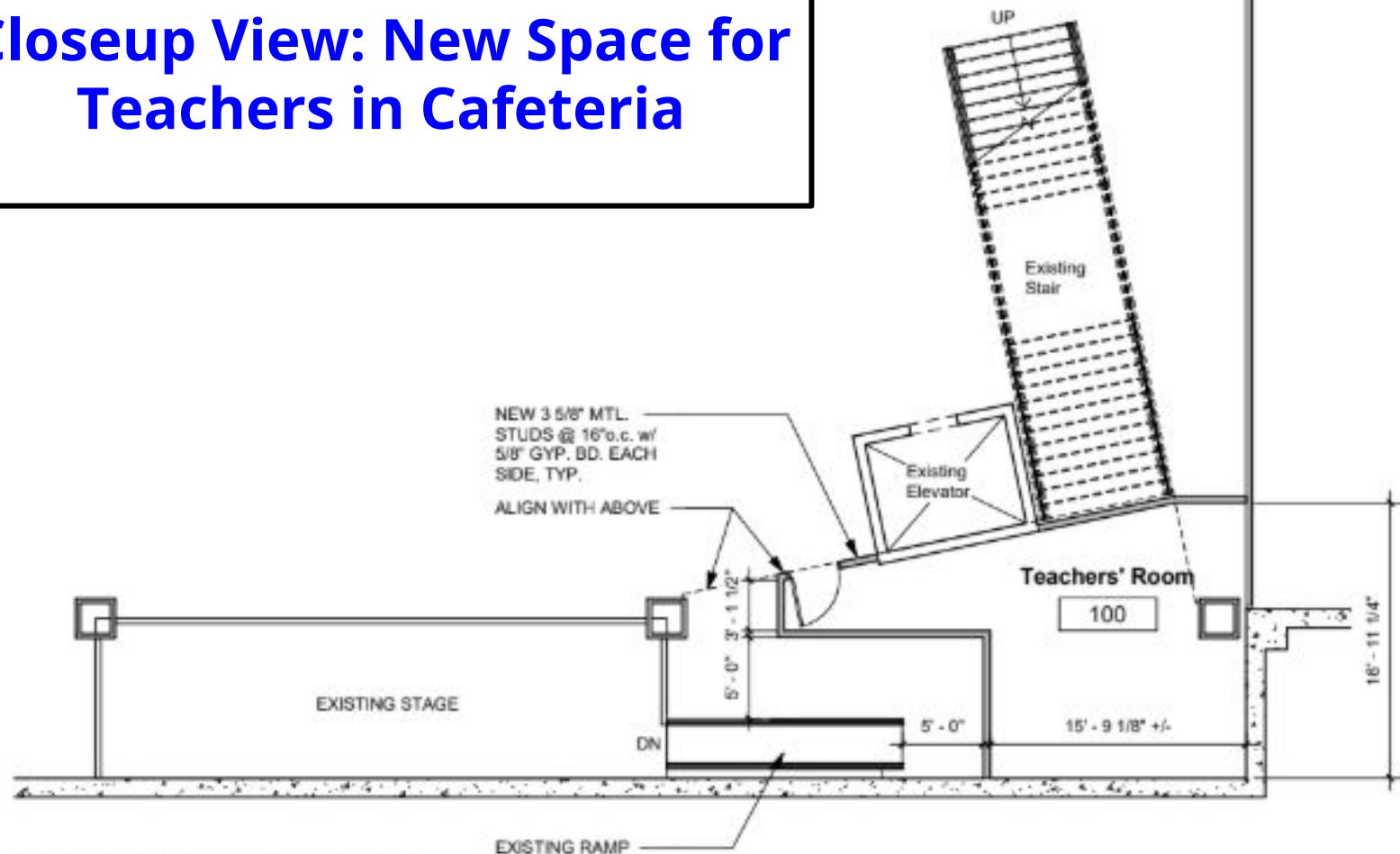
← To Wakeman Athletic Fields



**New Teacher
Space in
cafeteria**

To Staples High School →

Closeup View: New Space for Teachers in Cafeteria

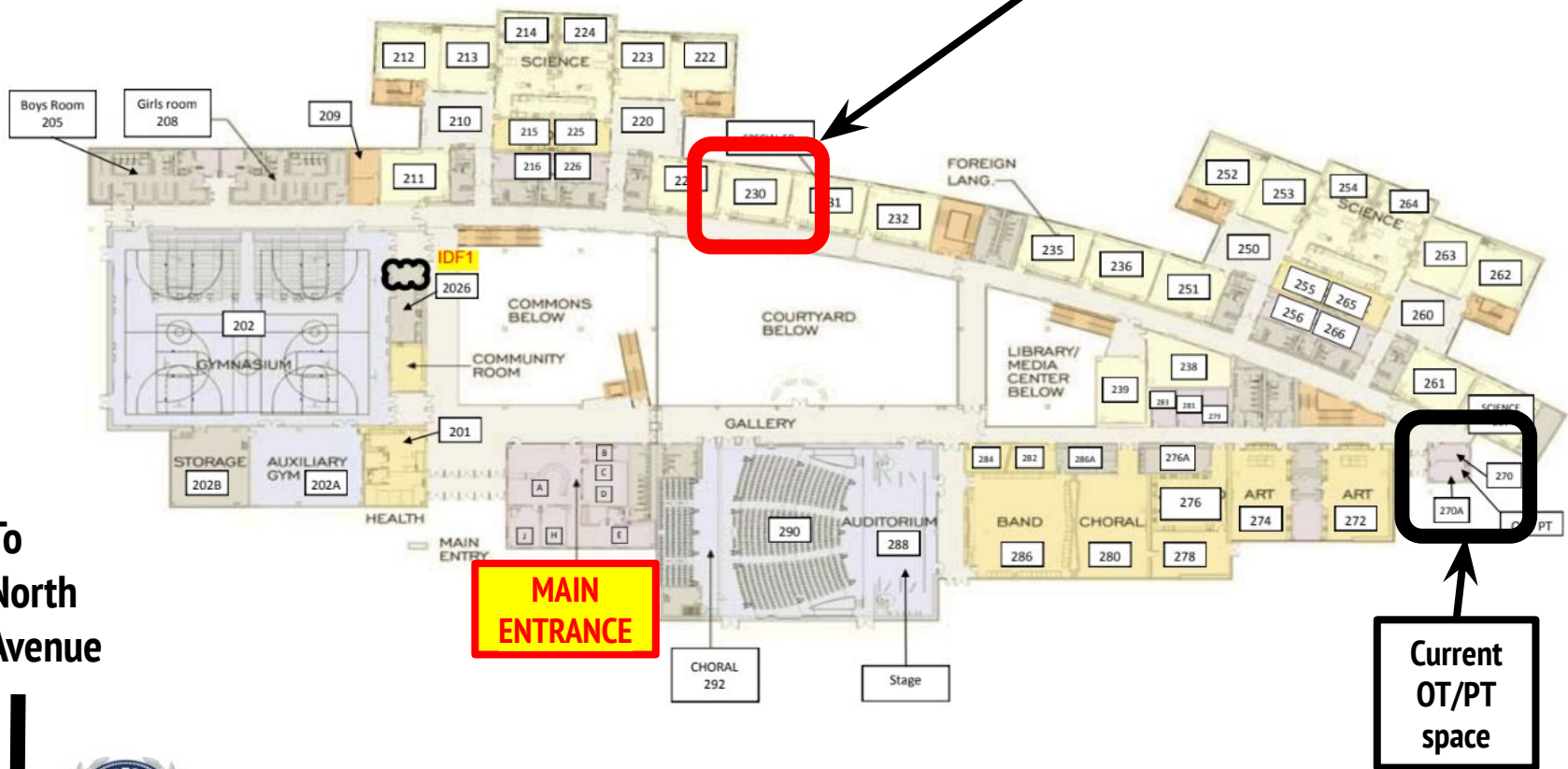


Parital Student Commons Lower Level
Proposed Plan

②
1/8" = 1'-0"

← To Wakeman Athletic Fields

New Resource Room
& OT/PT Office



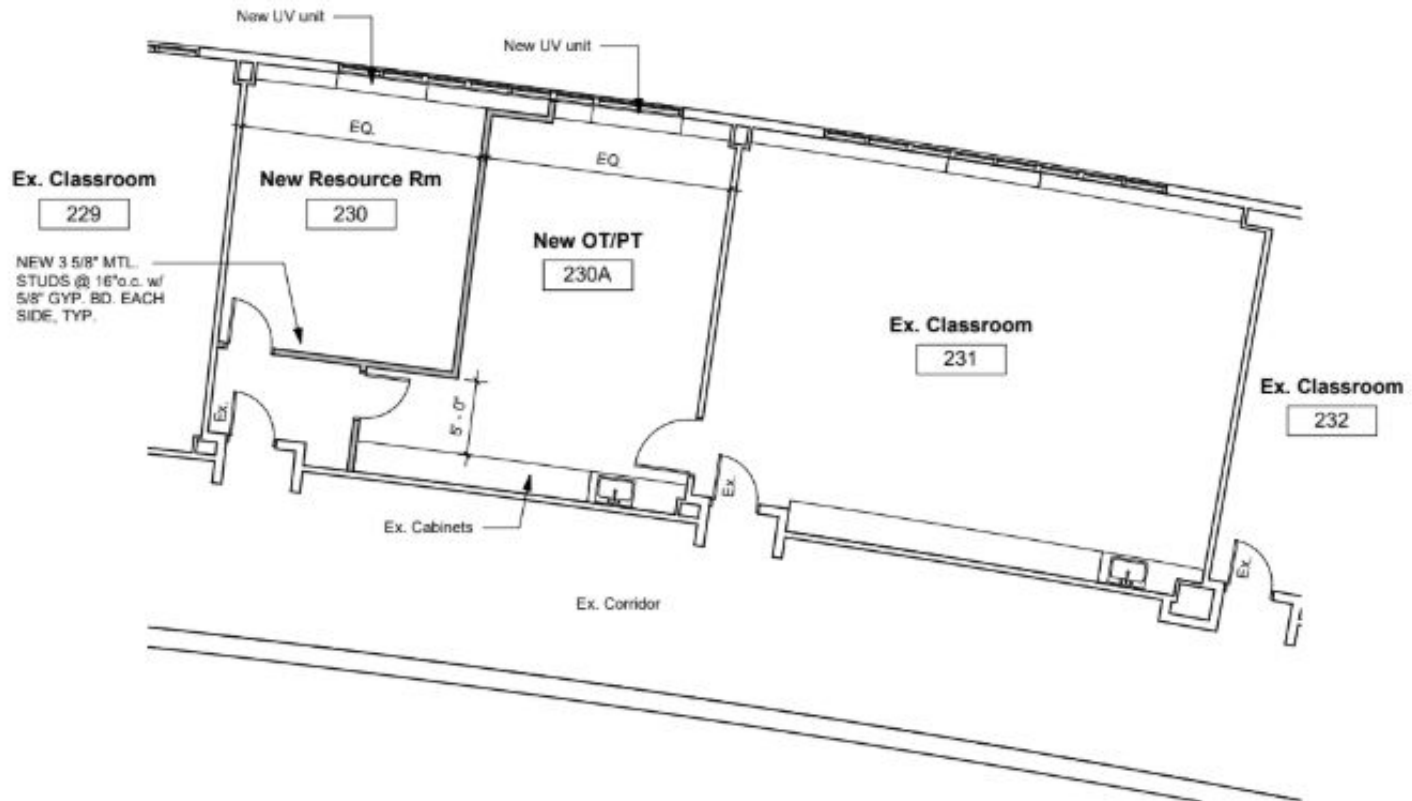
To
North
Avenue



BEDFORD MIDDLE SCHOOL
MAIN LEVEL

To Staples High School →

New Resource Room & OT/PT Office



① Classroom Upper Level Proposed Plan
1/8" = 1'-0"

Co Curricular Music Programming (draft)

- Wind Ensemble Grades 6 & 7
- Wind Ensemble Grade 8
- Jazz Lab 6-8
- Jazz Ensemble Grades 6-8
- Camerata Chorus Grade 6
- Camerata Chorus Grades 7 & 8
- Chamber Orchestra Grades 6 & 7
- Chamber Orchestra Grade 8
- Percussion Ensemble Grades 6-8

Co Curricular STEAM Programming (draft)

- Science Olympiad
- Science Club - Robotics
- Science Club - Biotechnology
- Organic Garden Club

Co Curricular Arts Programming (draft)

- Media Club
- Digital Photography Club
- Art Collective
- Comic Book Club

Co Curricular Mathematics Programming (draft)

- Math Club
- Math Counts
- AMC-8 & AMC-10 Math Assessments

Co Curricular Social Studies Programming (draft)

- National History Day (for grade 8 only)

Co Curricular Leadership Programming (draft)

- BC-TV (televised news program)
- Spirit & Leadership Council
- Student Newspaper: URSUS
- Yearbook

Co Curricular Theater Programming (draft)

- Grade 6 Play (major production)
- Grade 7 Play (major production)
- Grade 8 Play (major production)
- Acting Workshop
- Variety Workshop

Co Curricular Athletics Programming (draft)

- Intramurals

- **Parking plan for staff and visitors**
 - **Assigned spaces for all staff**
 - **Increased visitor parking**
 - **No more SHS student parking at BMS**
- **Traffic flow for arrival/dismissal**
 - **Please Pull All the Way Forward!**
- **Please reduce car traffic by having your child ride the school bus**



BEDFORD MIDDLE SCHOOL — PARKING LOT ASSIGNMENT LOT

4

Safety and Security
Planning



#	ASSIGNED TO:	#	ASSIGNED TO:	#	ASSIGNED TO:	#	ASSIGNED TO:	#	ASSIGNED TO:	#	ASSIGNED TO:	#	ASSIGNED TO:	#	ASSIGNED TO:	#	ASSIGNED TO:
1		12		23		34		45		56		67		78		89	
2		13		24		35		46		57		68		79		90	
3		14		25		36		47		58		69		80		91	
4		15		26		37		48		59		70		81		92	
5		16		27		38		49		60		71		82		93	
6		17		28		39		50		61		72		83		94	
7		18		29		40		51		62		73		84		95	
8		19		30		41		52		63		74		85		96	
9		20		31		42		53		64		75		86		97	
10		21		32		43		54		65		76		87		98	
11		22		33		44		55		66		77		88		99	



BEDFORD MIDDLE SCHOOL — PARKING LOT ASSIGNMENT LOT

4

Safety and Security
Planning



#	ASSIGNED TO:	#	ASSIGNED TO:	#	ASSIGNED TO:	#	ASSIGNED TO:	#	ASSIGNED TO:	#	ASSIGNED TO:	#	ASSIGNED TO:	#	ASSIGNED TO:	#	ASSIGNED TO:	#	ASSIGNED TO:		
109		121		133		145		157		169		181		193		205		217		229	
110		122		134		146		158		170		182		194		206		218		230	
111		123		135		147		159		171		183		195		207		219		231	
112		124		136		148		160		172		184		196		208		220		232	
113		125		137		149		161		173		185		197		209		221		233	
114		126		138		150		162		174		186		198		210		222		234	
115		127		139		151		163		175		187		199		211		223		235	
116		128		140		152		164		176		188		200		212		224			
117		129		141		153		165		177		189		201		213		225			
118		130		142		154		166		178		190		202		214		226			
119		131		143		155		167		179		191		203		215		227			
120		132		144		156		168		180		192		204		216		228			

- **Safety & Emergency Drills**

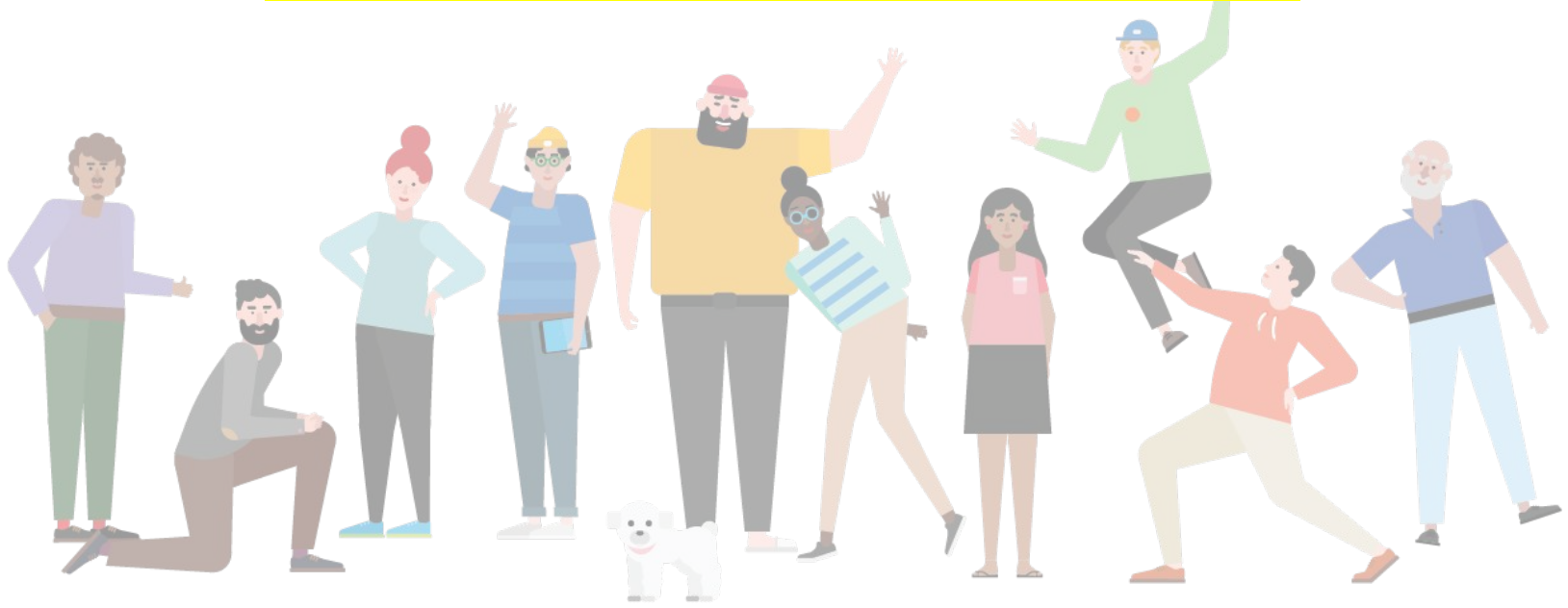
- Fire, shelter in place, lockdown, relocation
- Police/fire observers

- **Enhanced safety/security messaging**

4

Safety and Security
Planning

We need every parent and guardian to honor the intent and spirit of the safety/security rules and expectations designed for the combined middle school.



Hallway Safety and Student Monitoring

- 3 minute passing time
- Enhanced hallway supervision
- Increased security guard sweeps
- 'Stay to the right' plan

Need: internal surveillance camera system

- Current cameras are located outdoors, or look from inside to outside
- Camera needs for the portable classrooms
- No camera coverage in gym, cafe, LMC, hallways

4

Safety and Security
Planning

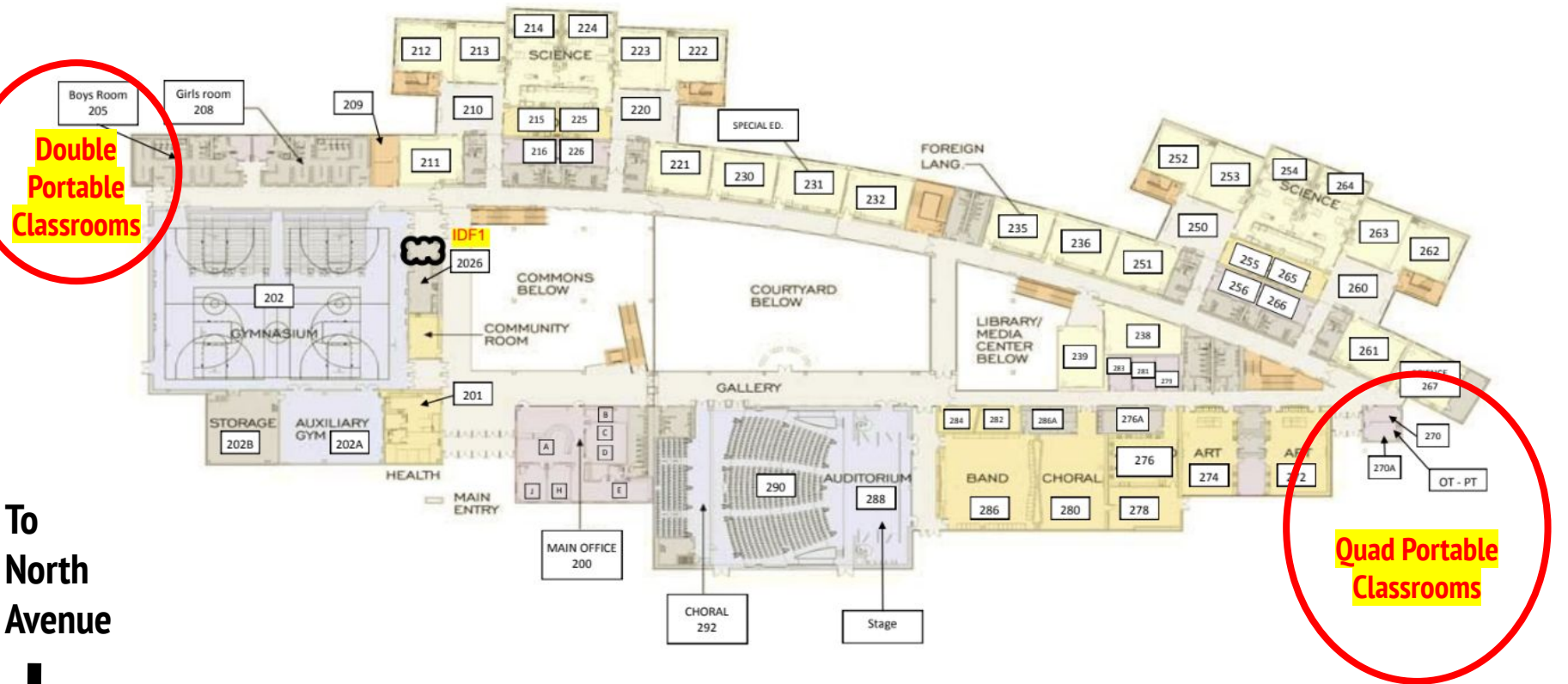
**Please stay to
the right when
walking in the
Hallways
& Stairways
at BMS.**

Thank you!

Security Plan for Portable Classrooms

- 8' security fencing with gated swipe card access
- Addition 3rd security guard
- Administrator office relocation (adjacent to quad portable)
- New security guard kiosk (adjacent to quad portable)
- Additional surveillance cameras inside and around portables

← To Wakeman Athletic Fields

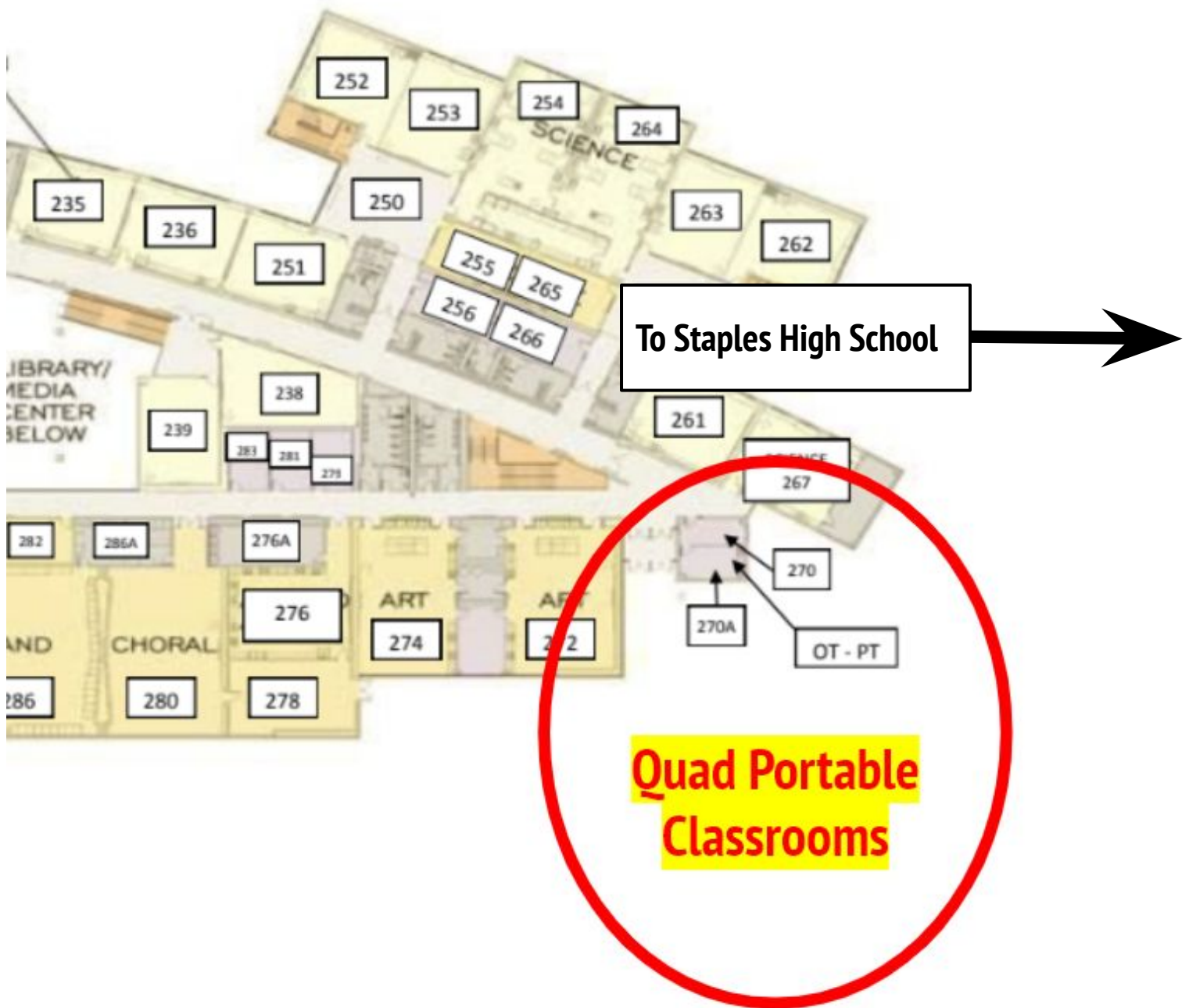


To North Avenue



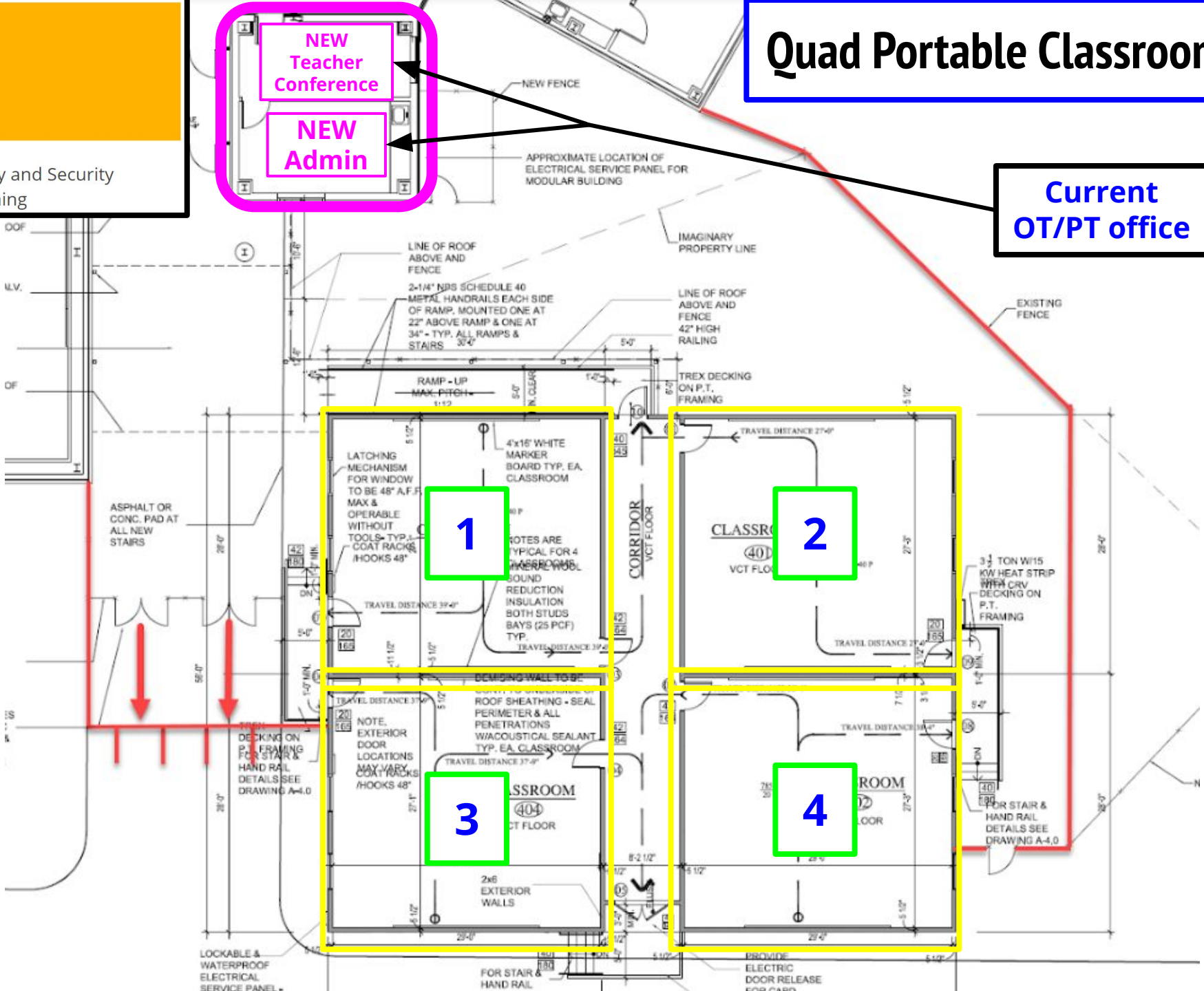
BEDFORD MIDDLE SCHOOL
MAIN LEVEL

To Staples High School →

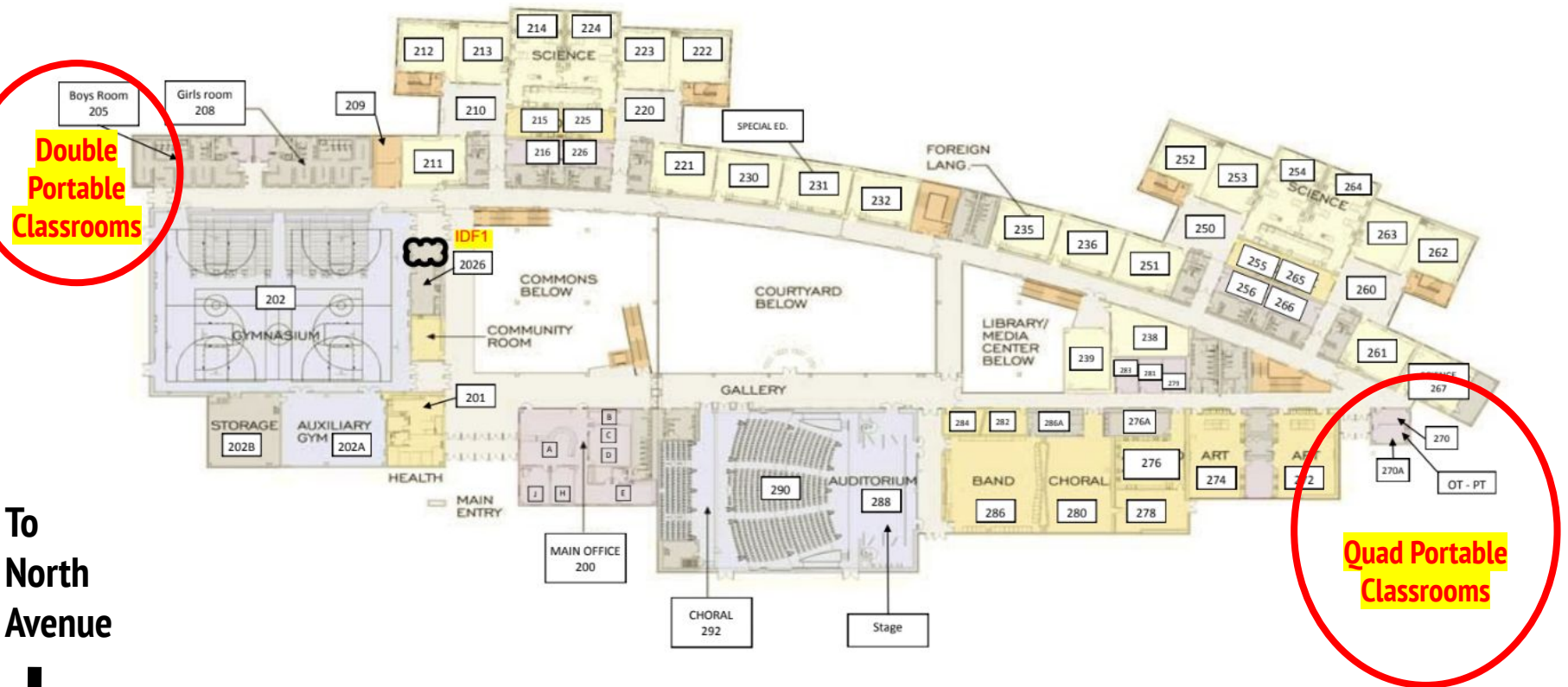


Quad Portable Classrooms

Current
OT/PT office



← To Wakeman Athletic Fields



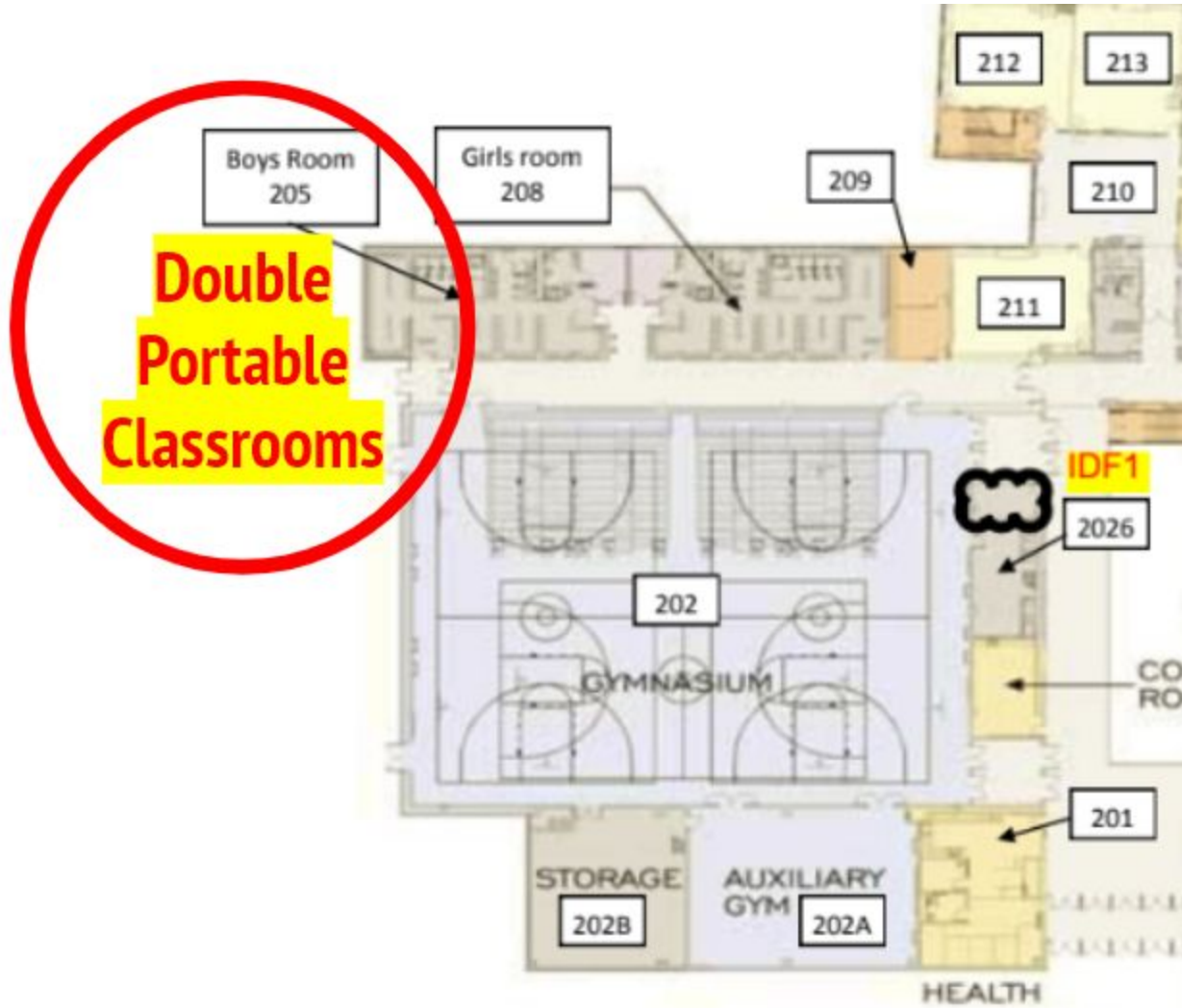
To
North
Avenue

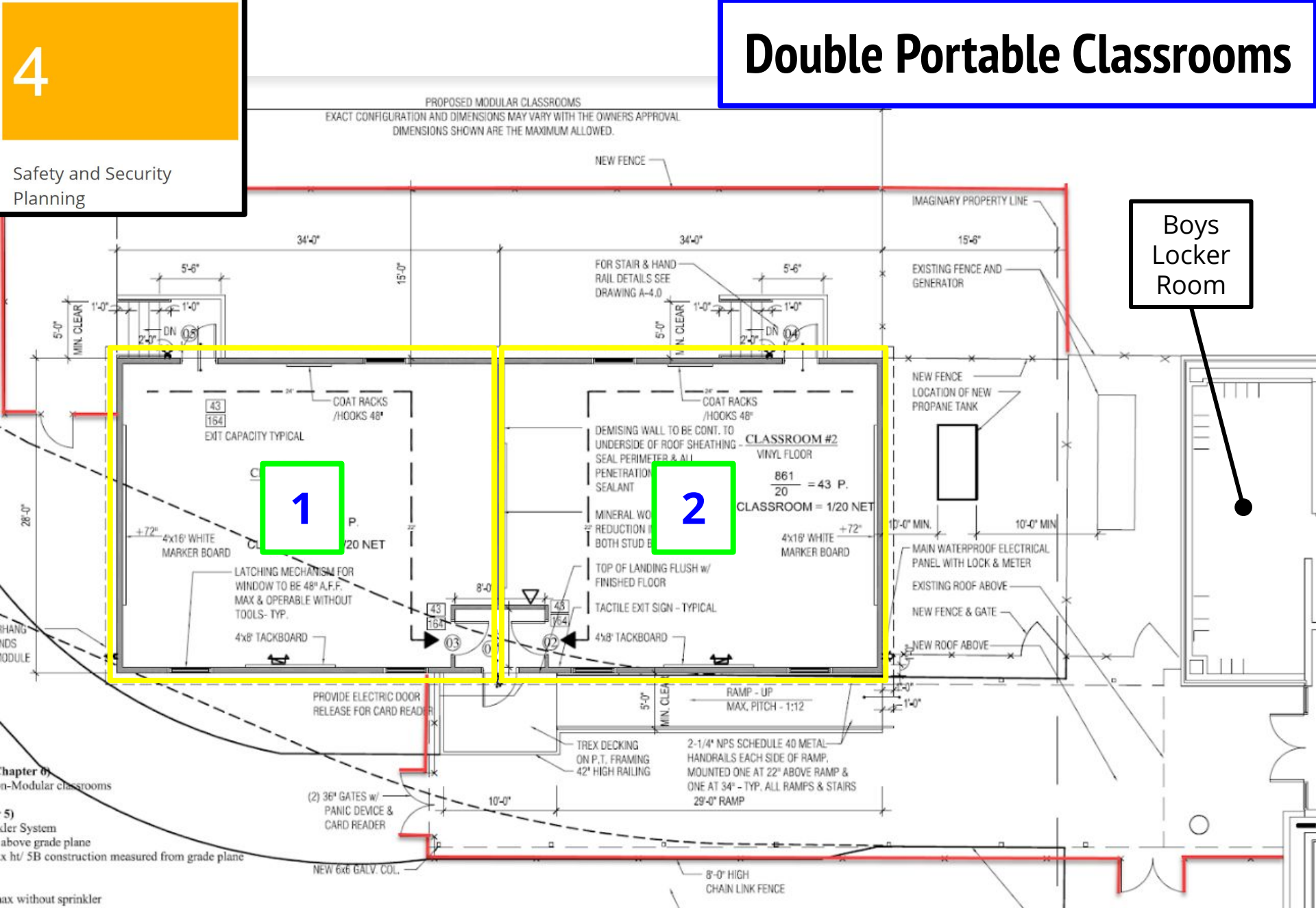



BEDFORD MIDDLE SCHOOL
MAIN LEVEL

To Staples High School →


← To Wakeman Athletic Fields



Boys
Locker
Room



Will the portable classrooms arrive in-time and be student-ready for the start of next school year?



In-Process:

- Laying down infrastructure and ground work on electrical, information technology, security and fencing
- Contract has been signed with portable vendor
- Meeting at BMS with associated contractors and vendors (technology and IT, utility communications, Stanley security, Calvert Safe and Lock, Fire Department, Police Department, Facilities Department, BMS Principal)
- Site work done over Spring break 2019

Goal: Complete all infrastructure and site work prior to the arrival of the portable classrooms to create a 'plug-n-play' dynamic.

The BMS/CMS Museum of Fine Artists presents

ART 2019 MAY 2
THURSDAY
6 PM TO 8 PM

Celebrating a Year of Collaboration & Creativity

Enjoy Music Performed by our Student Ensembles
Refreshments will be served in our Art Café

You're invited!
Please join us for the annual
"5th to 6th Grade Transition Evening"

The 6th grade team leaders, counselors and administrators will present many more details regarding 6th grade along with building tours!

DATE: Tuesday, May 7, 2019

TIME: 6-7 p.m.

LOCATION: BMS Auditorium

NOTE: This event is for parents & guardians