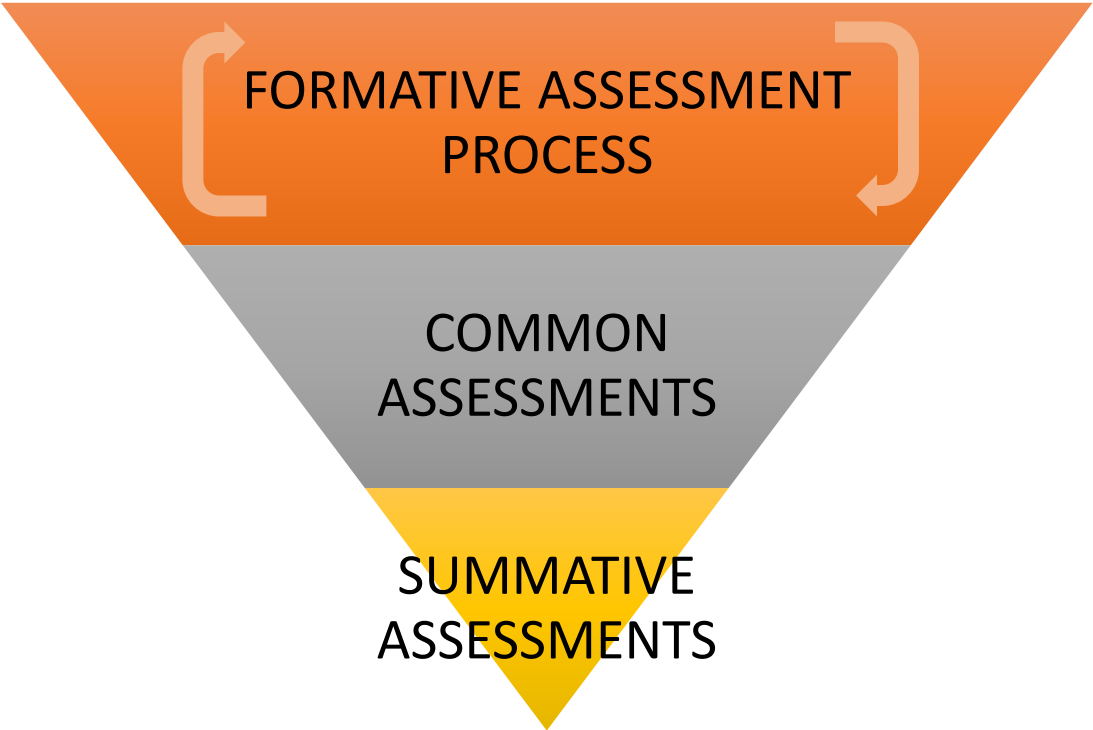




2017 Assessment Data Report

October 9, 2017

WPS Assessment System



What can we learn from assessment data?

FORMATIVE/COMMON ASSESSMENTS

- How are our students doing right now?
- What are students' strengths?
- What are students' growth areas?
- How can I change my instruction in the near future?

SUMMATIVE ASSESSMENTS

- How is our system doing?
- What are the system strengths?
- What are the system growth areas?
- What changes can we make to our system to improve student outcomes over time?

Connecticut Summative Assessment System

| Assessment | Grade | | | | | | | | | |
|--|-------|---|---|---|---|---|---|----|----|--|
| | 3 | 4 | 5 | 6 | 7 | 8 | 9 | 10 | 11 | |
| Smarter Balanced Assessment (Mathematics and English Language Arts) | ✓ | ✓ | ✓ | ✓ | ✓ | ✓ | | | | |
| Connecticut Mastery Test – Science | | | ✓ | | | ✓ | | | | |
| Connecticut Academic Performance Test - Science | | | | | | | | ✓ | | |
| Connecticut SAT School Day | | | | | | | | | ✓ | |

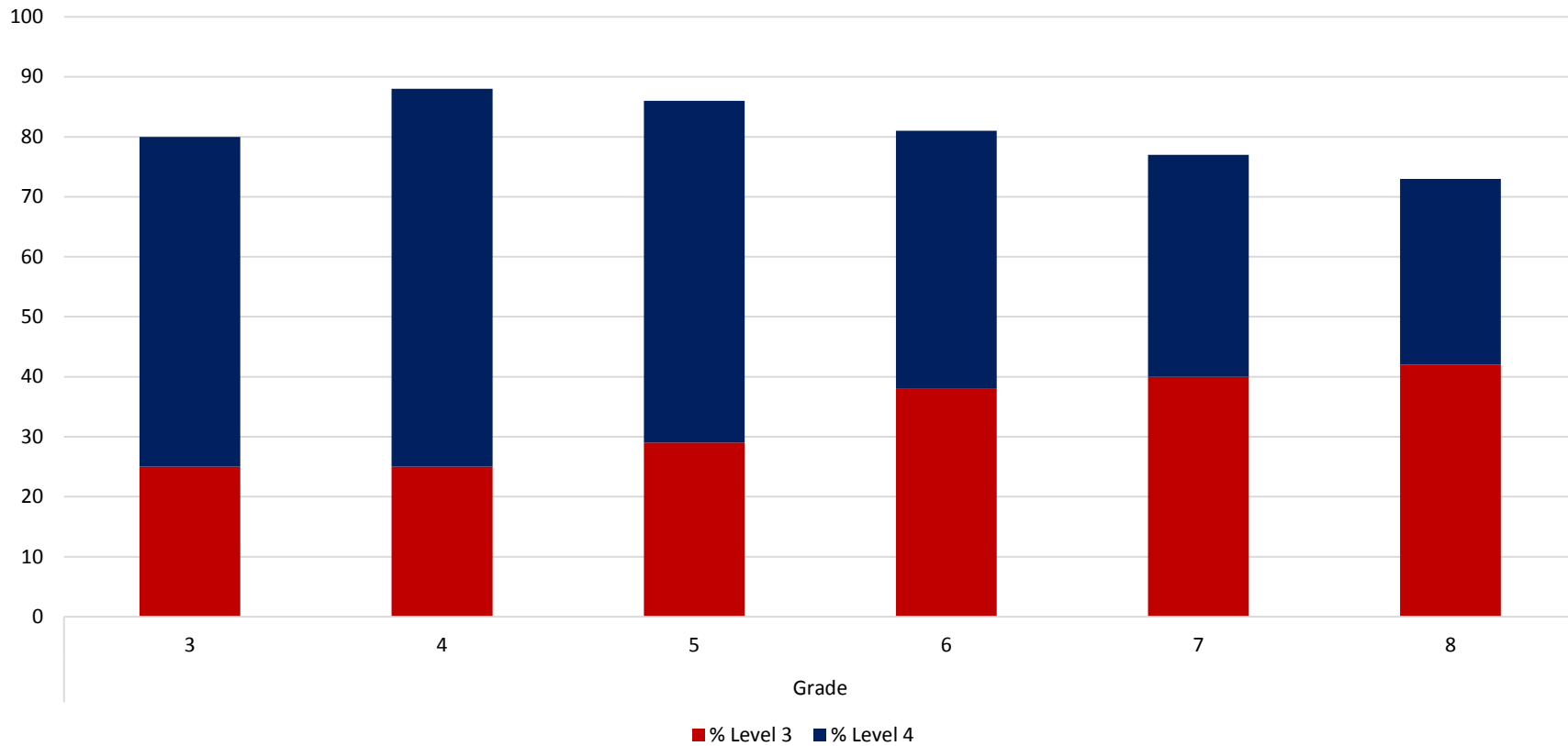
Smarter Balanced ENGLISH LANGUAGE ARTS

By Grade

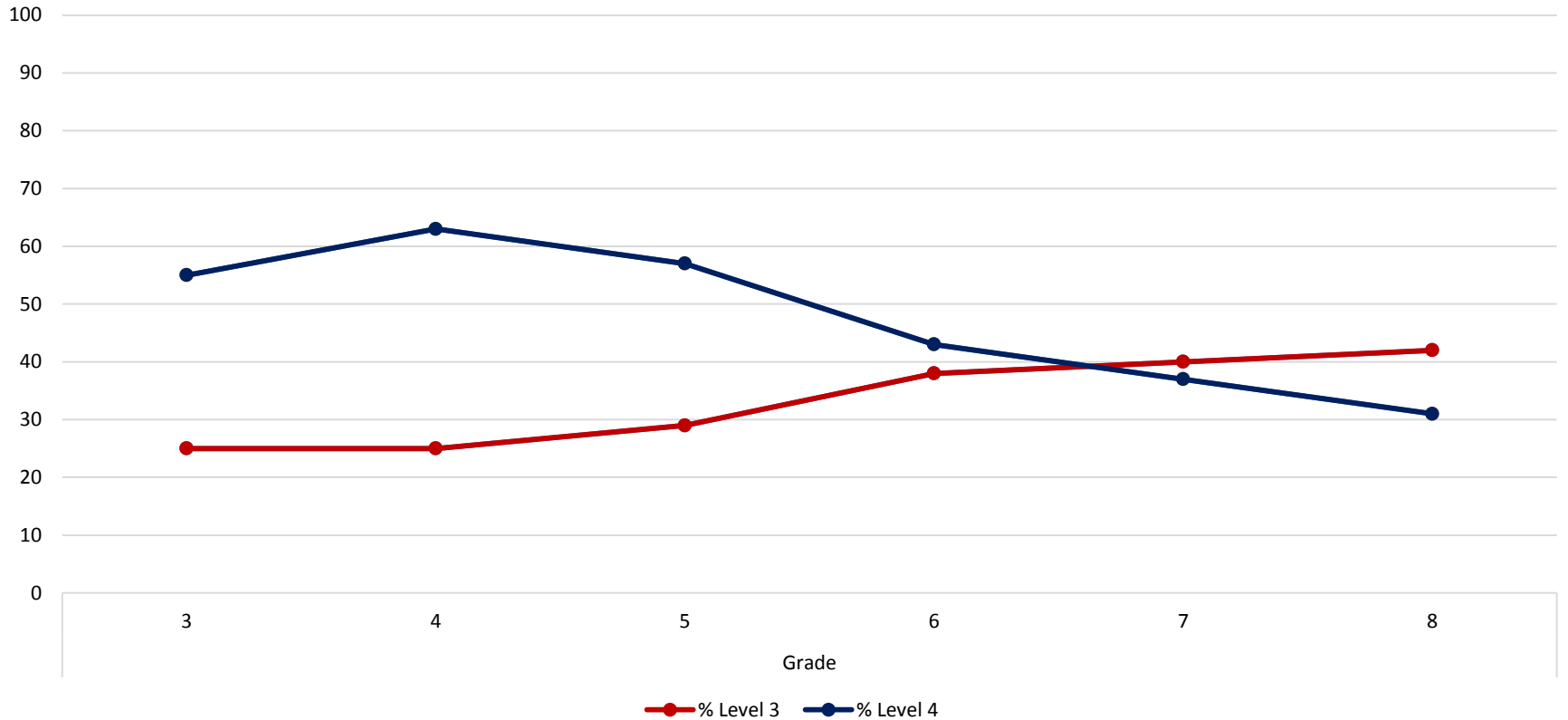
By School

Performance Over Time

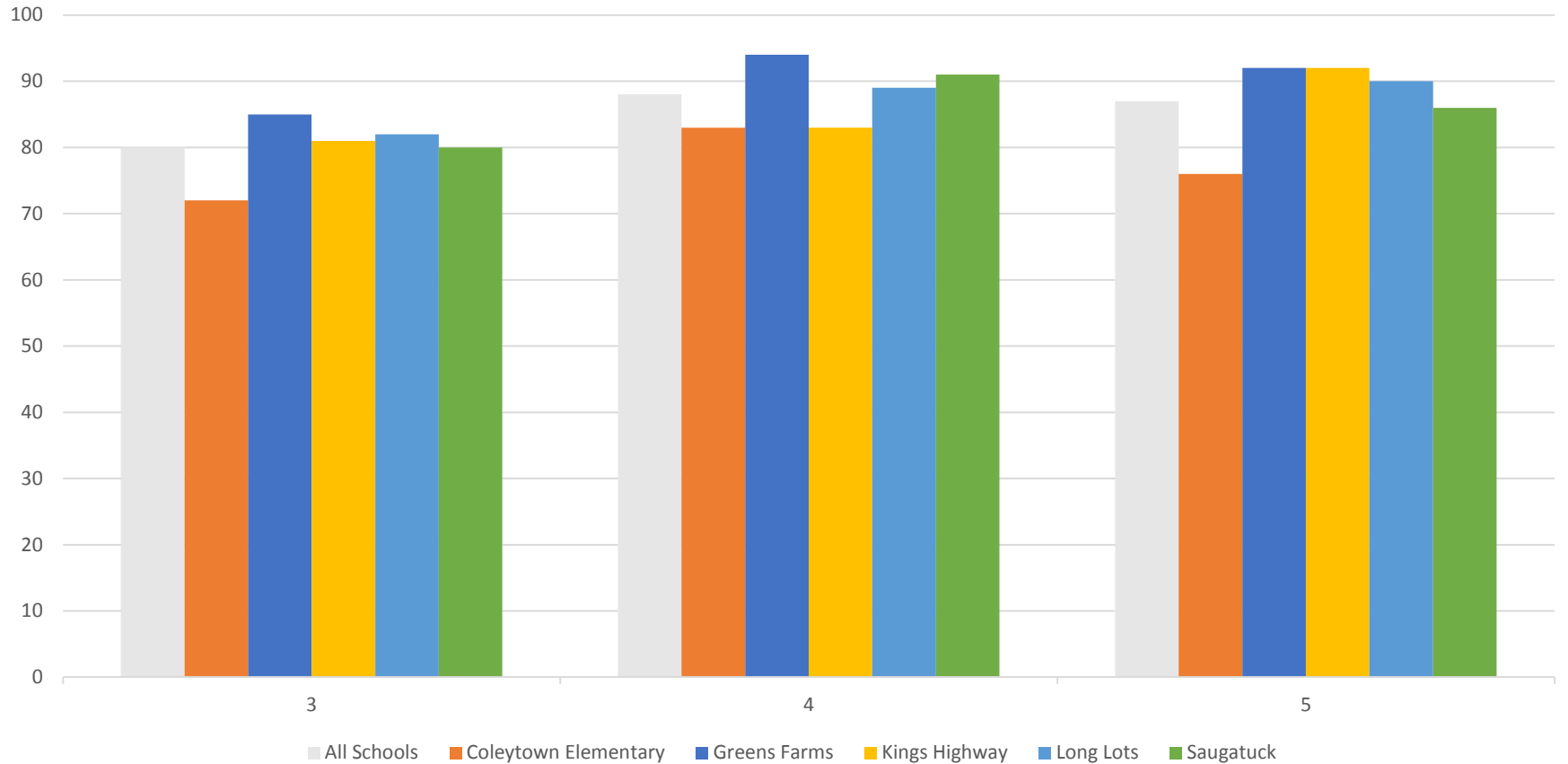
SBA 2017
English Language Arts Performance by Grade
% Level 3 or 4



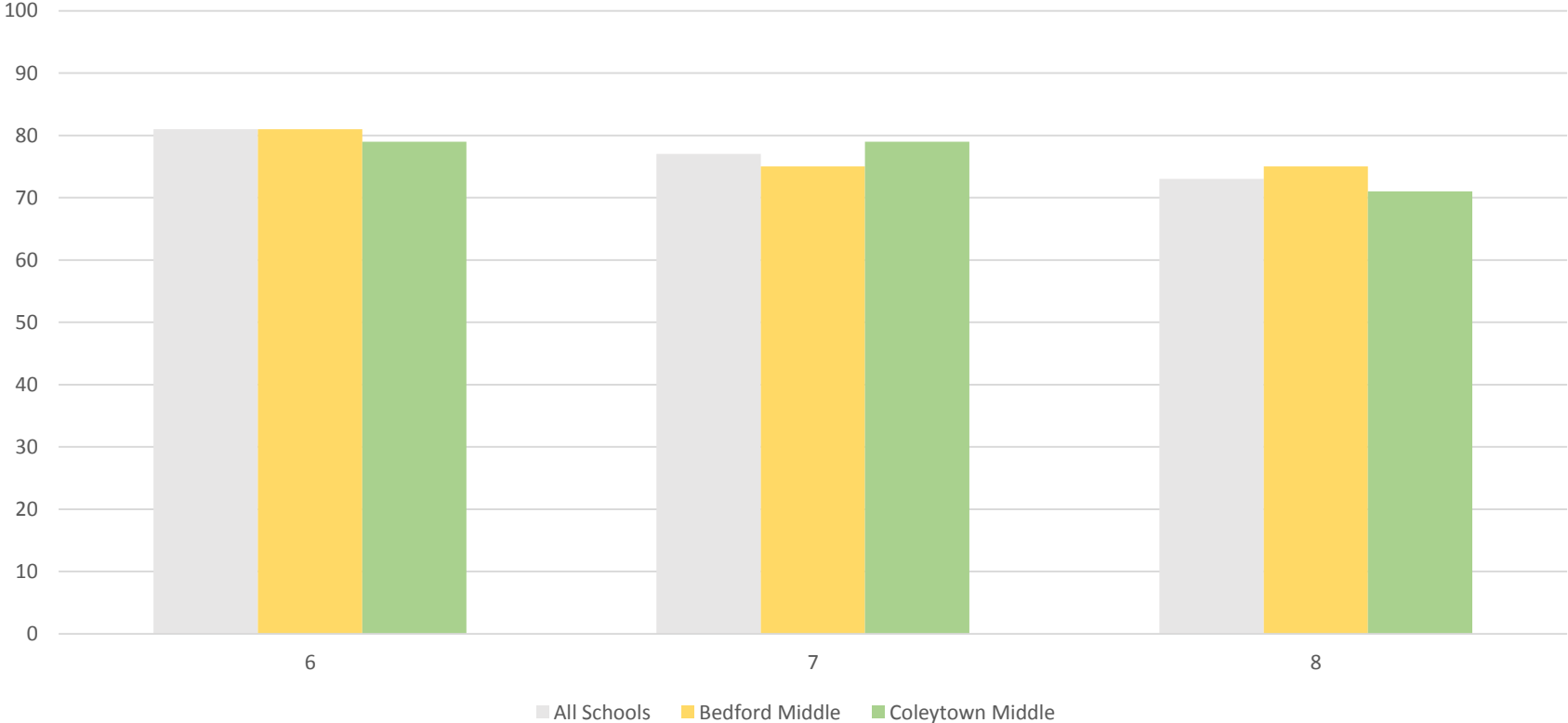
SBA 2017
English Language Arts Performance by Grade
% Level 3 or 4



SBA 2017
English Language Arts Performance by Grade by Elementary School
% Level 3 and 4



SBA 2017
English Language Arts Performance by Middle School
% Level 3 and 4



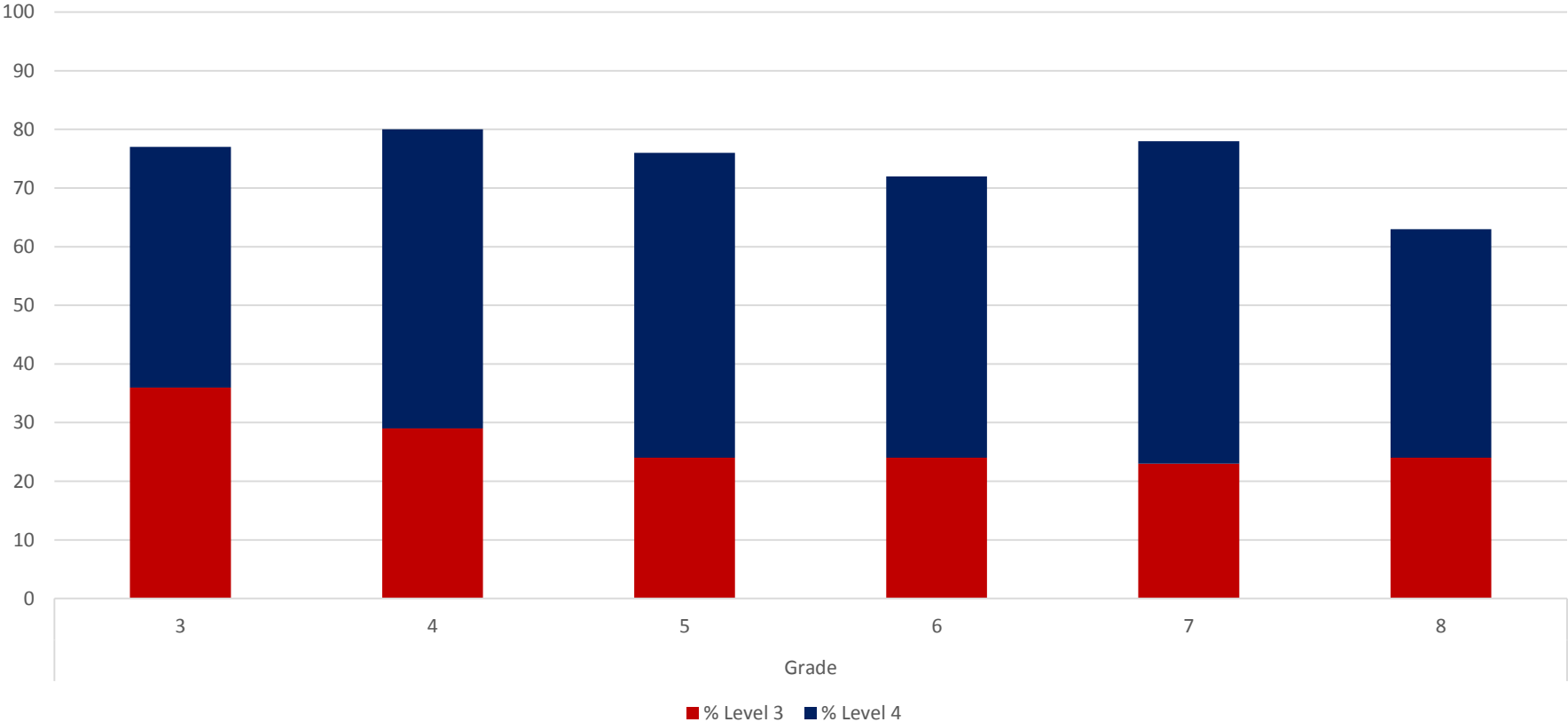
Smarter Balanced MATHEMATICS

By Grade

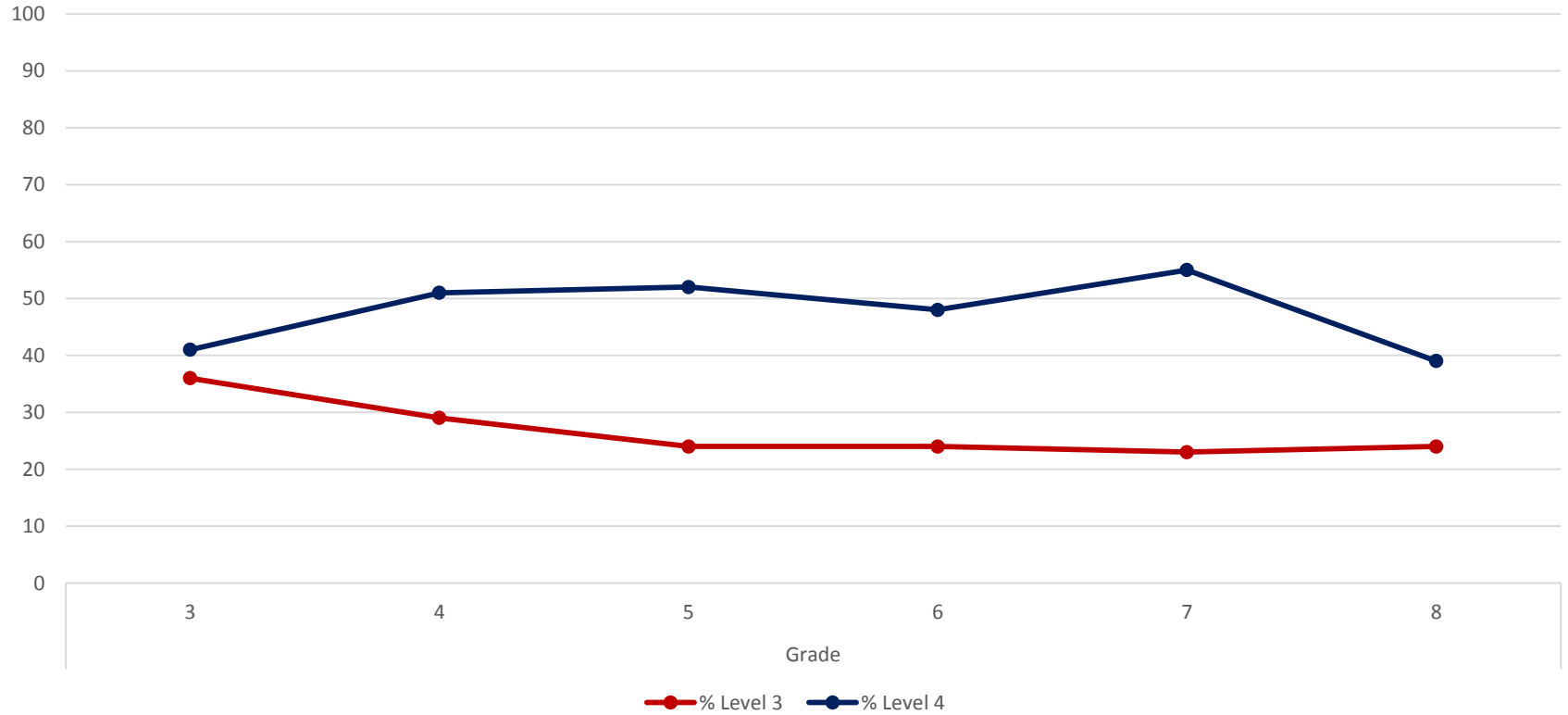
By School

Performance Over Time

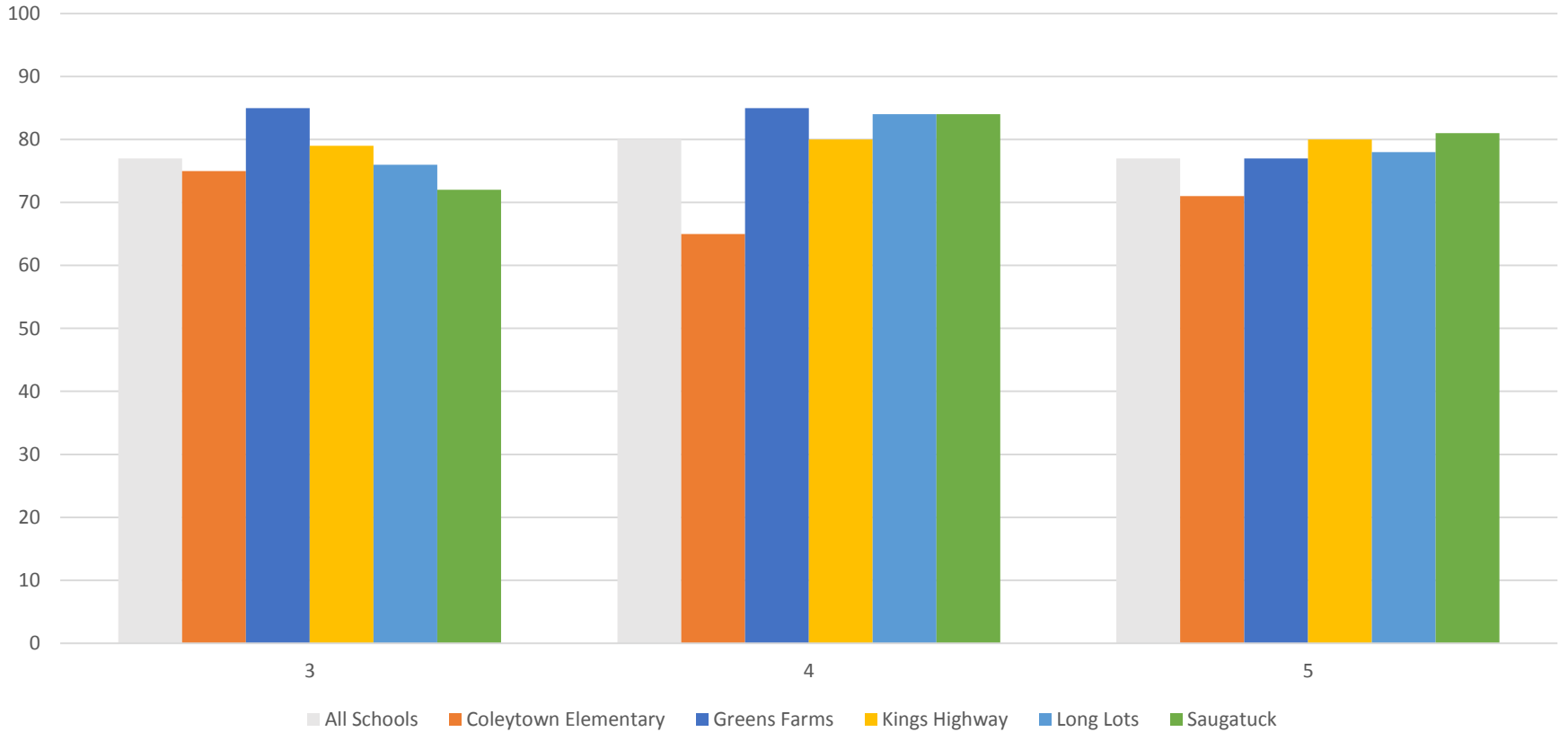
SBA 2017
Mathematics Performance by Grade
% Level 3 or 4



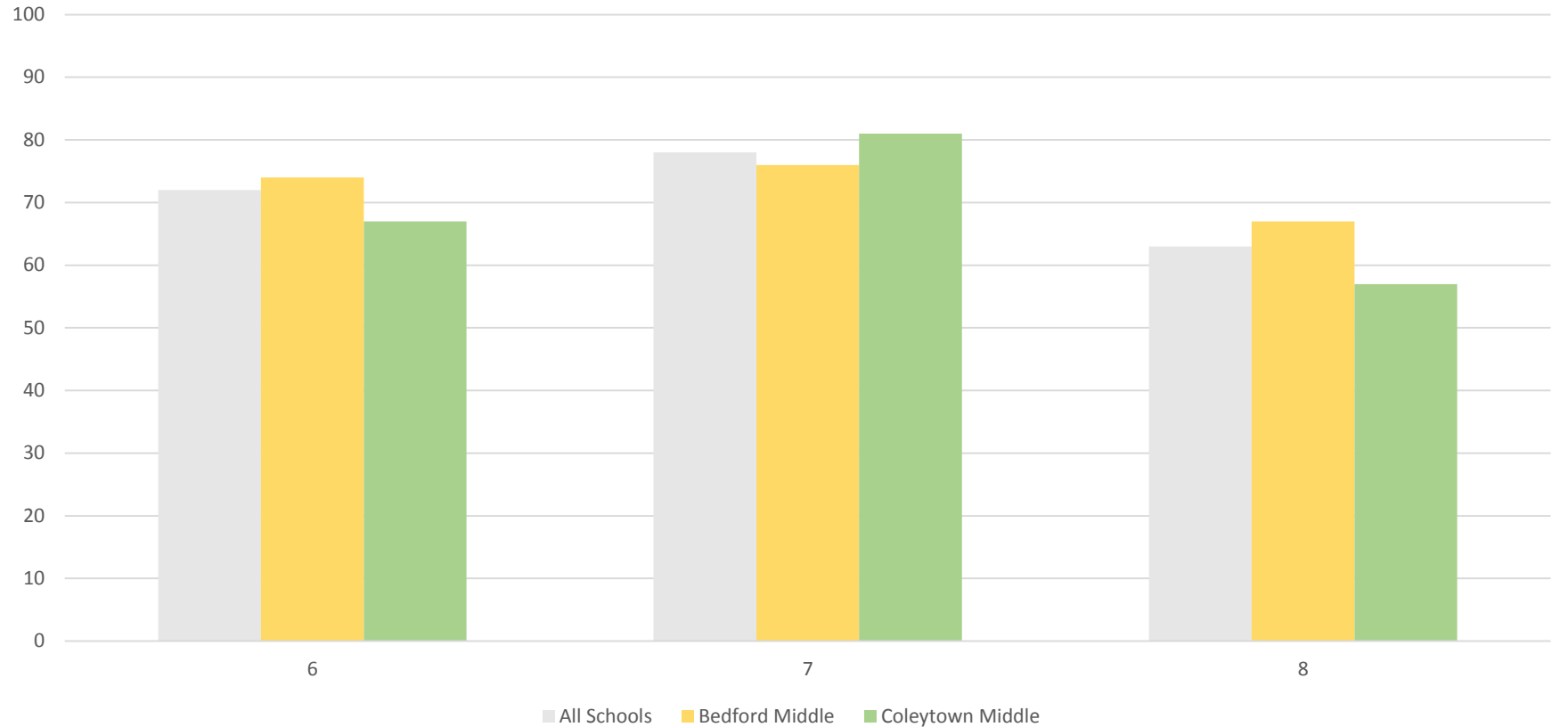
SBA 2017
Mathematics Performance by Grade
% Level 3 or 4



SBA 2017
Mathematics Performance by Grade by Elementary School
% Level 3 and 4

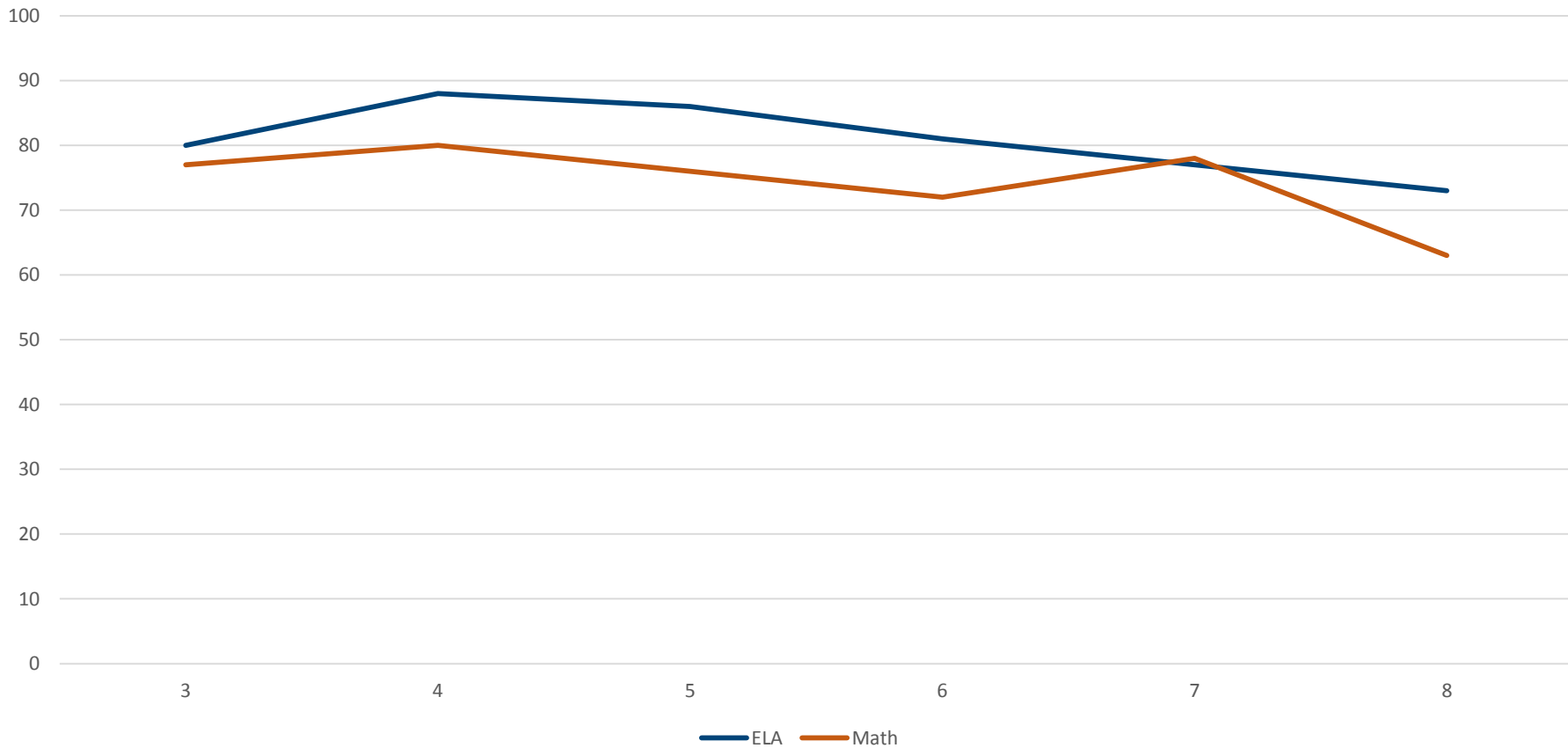


SBA 2017
Mathematics Performance by Middle School
% Level 3 and 4

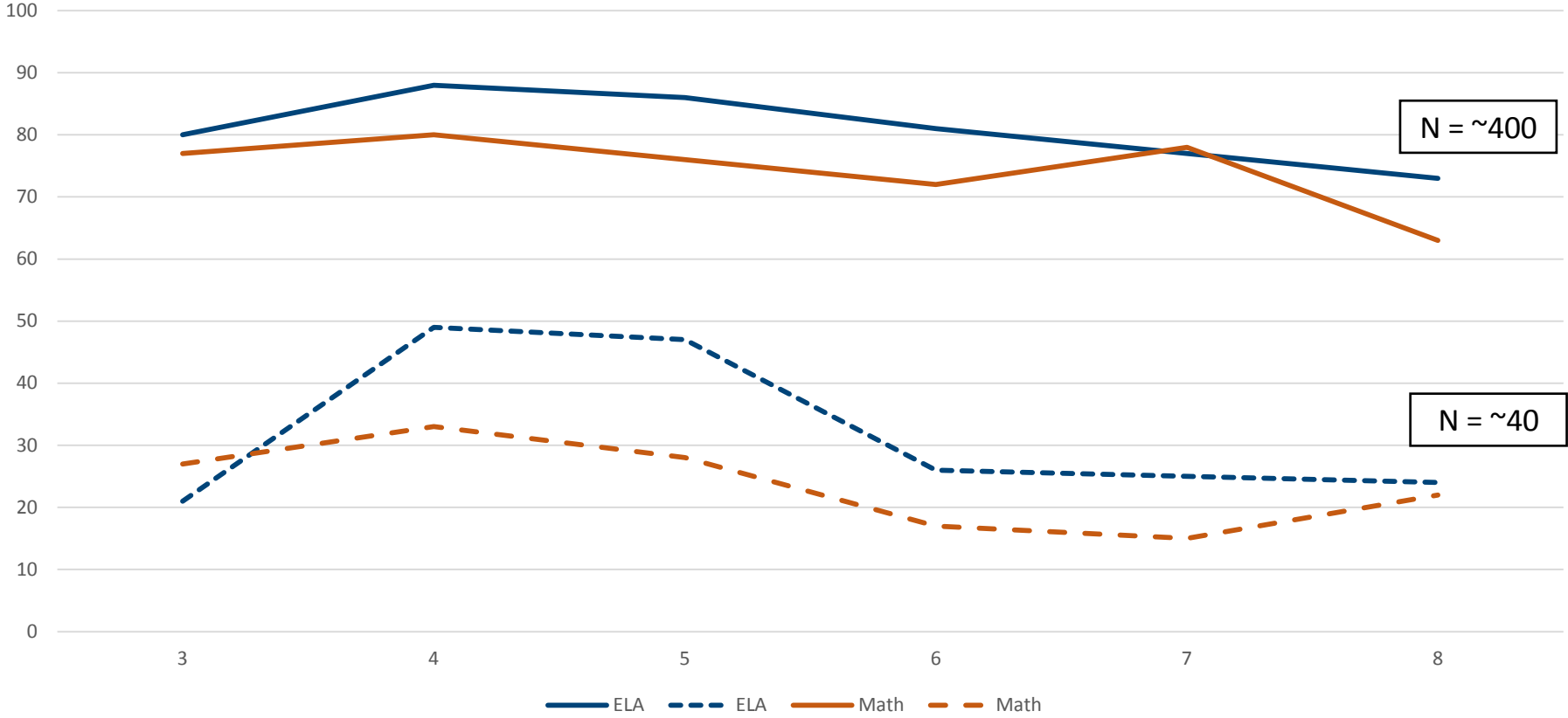


A Comparison Between English Language Arts and Mathematics

% Level 3 and 4



Special Education Achievement Gap
English Language Arts and Mathematics
% Level 3 and 4



2017 SAT

- National SAT
 - 2 domains: Evidence-based Reading/Writing & Mathematics
 - Westport Average: 618 for Reading/Writing and 611 for Mathematics
 - Higher than the state mean (524/505) and the national mean (538/533)
- Connecticut SAT School Day 2017
 - Same structure as national exam
 - 92% met the state achievement standard for Reading/Writing
 - 78% met the state achievement standard for Mathematics
- WPS students participated in SAT Subject Tests
 - Literature, Math I, Math II, Biology, Chemistry, Physics, US History, World History, French, Italian, Spanish

Advanced Placement

- Course Participation

- 38% of students grades 10-12 participated in AP-level coursework (n = 533)
- Courses are offered across domains including the Arts, English, Mathematics, Science, Social Studies, and World Languages

- Exam Scores

- Mean score across subjects: 4.06
- 93% of students earned a 3, 4, or 5
- 76% of students earned a 4 or 5