

# Westport Public Schools

Enrollment Projections & Elementary Capacity Analysis

June 12, 2017



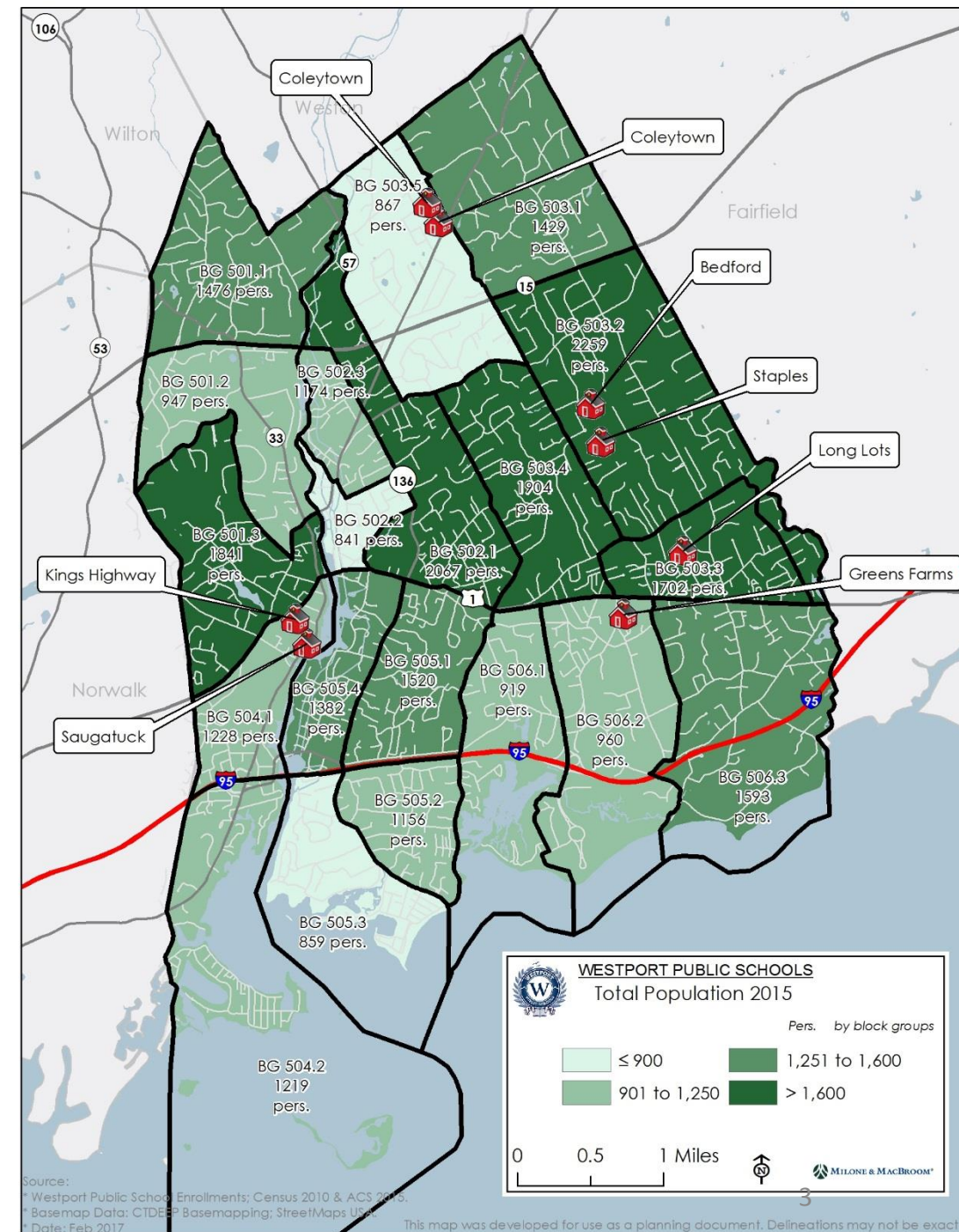
# Contents

- Demographic & Population Profile
- Housing Trends
- Student Enrollment Trends & Projections
- Elementary & Middle School Trends & Projections
- Capacity Analysis



# Population

- Westport's current population is estimated at 27,343 per the 2015 American Community Survey (ACS)
- This estimate is 3.6% above Westport's last Decennial Census population count of 26,391, indicating growth of 952 persons since 2010

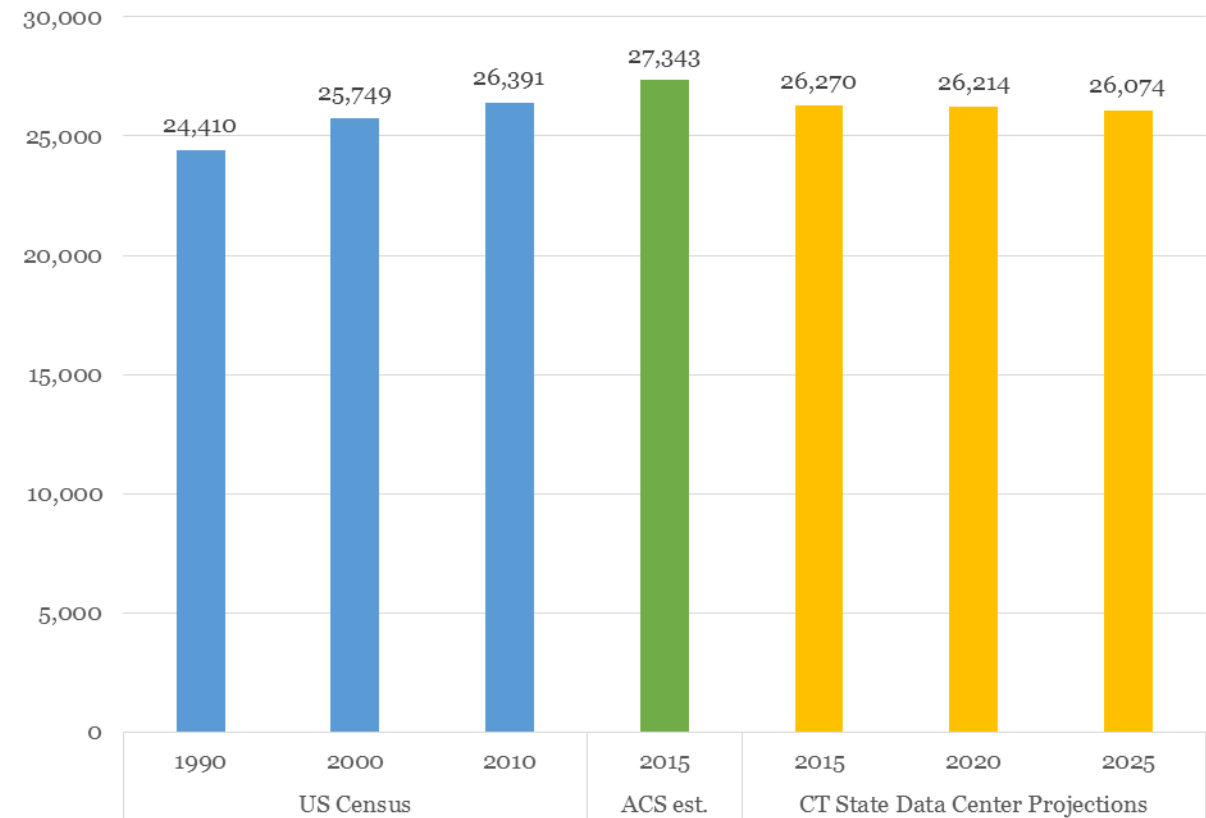


# Population

- CT State Data Center population projections (from 2012) forecast a slight population decline out to 2025
- Most current ACS estimate for 2015 is 1,073 residents higher than SDC projections for 2015



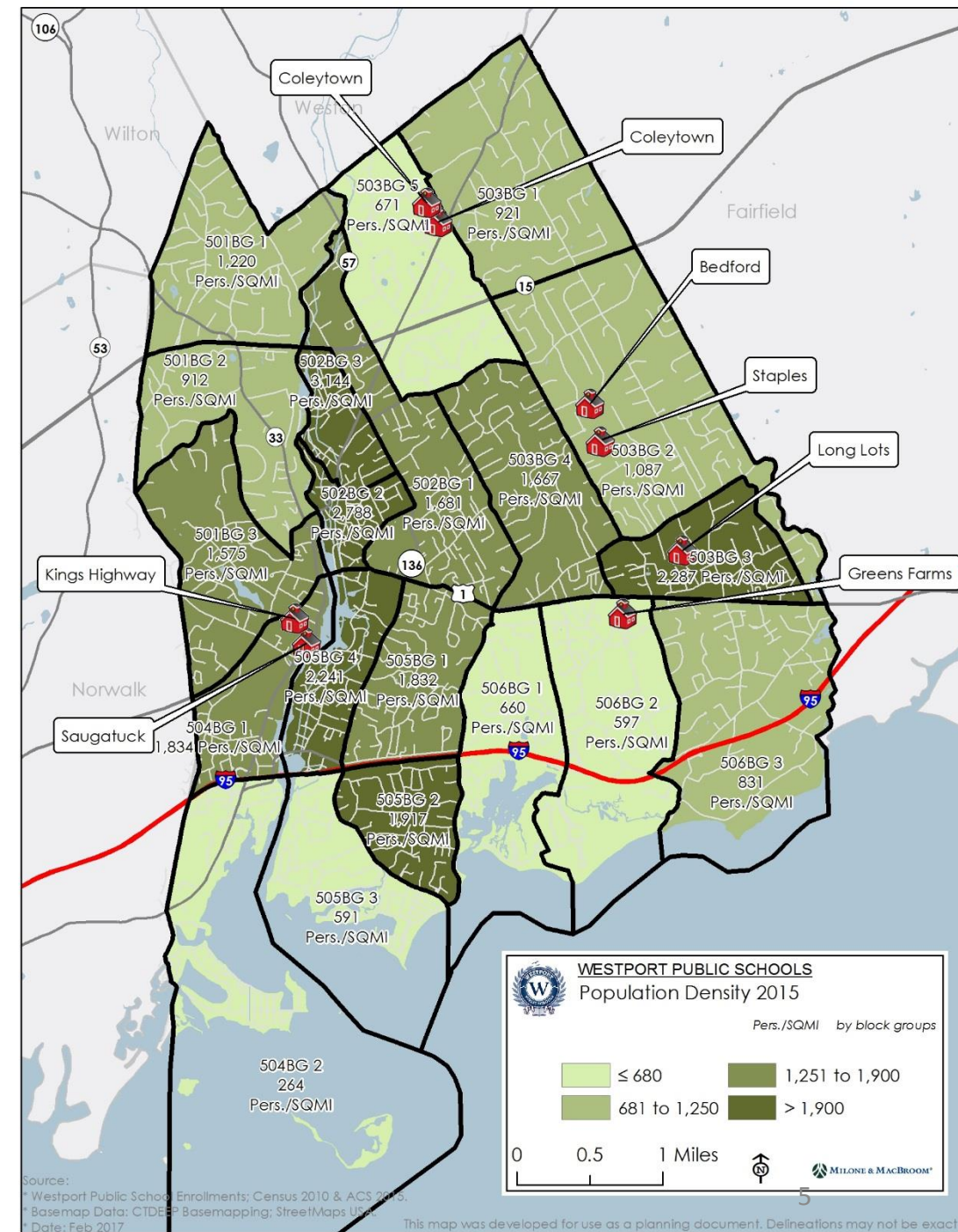
Westport Population Projections





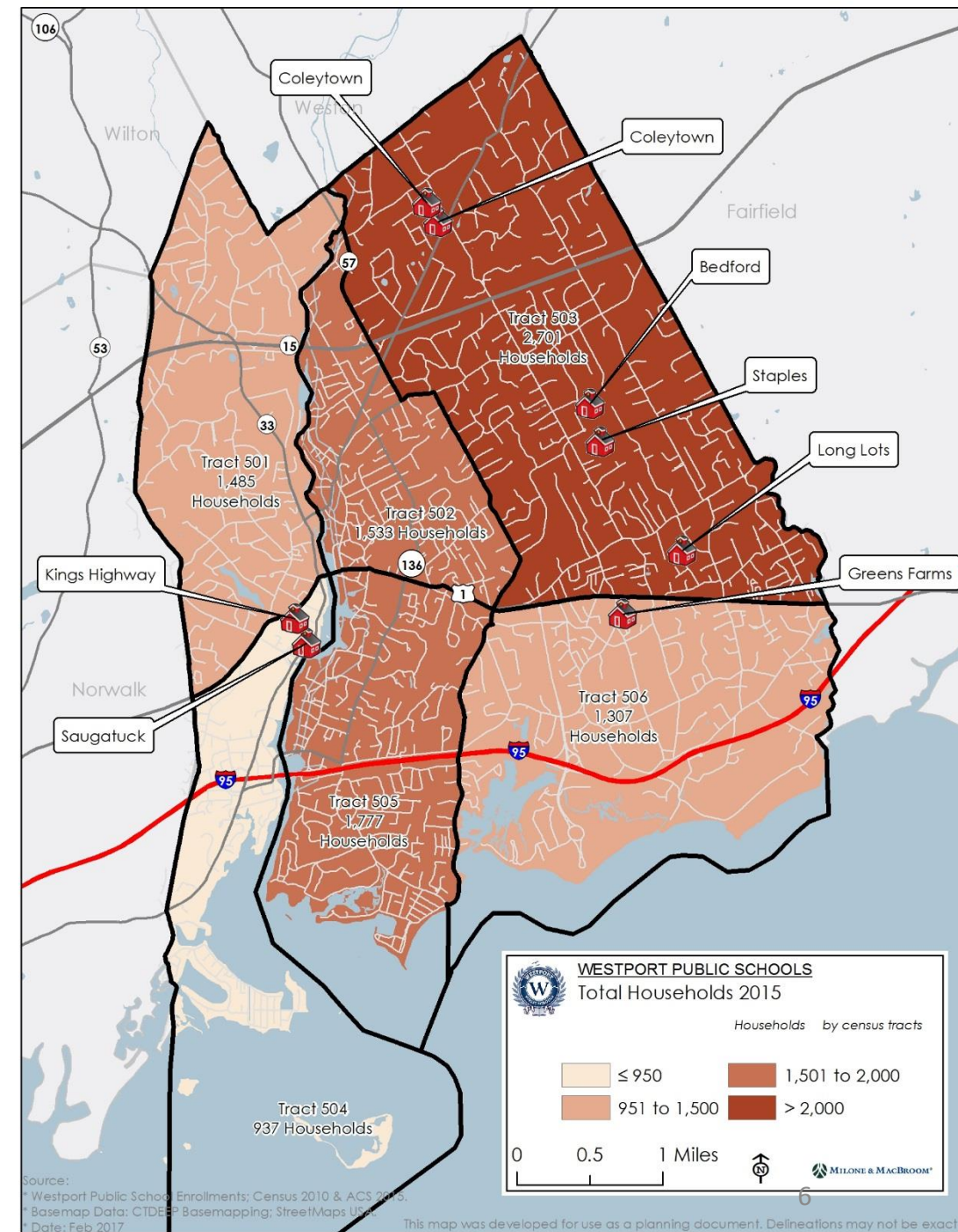
# Population

- Population is most densely concentrated in:
  - The Compo Point area south of I-95
  - The Long Lots area between Long Lots Road and I-95
  - The eastern shore of the Saugatuck River between Route 15 and I-95



# Population

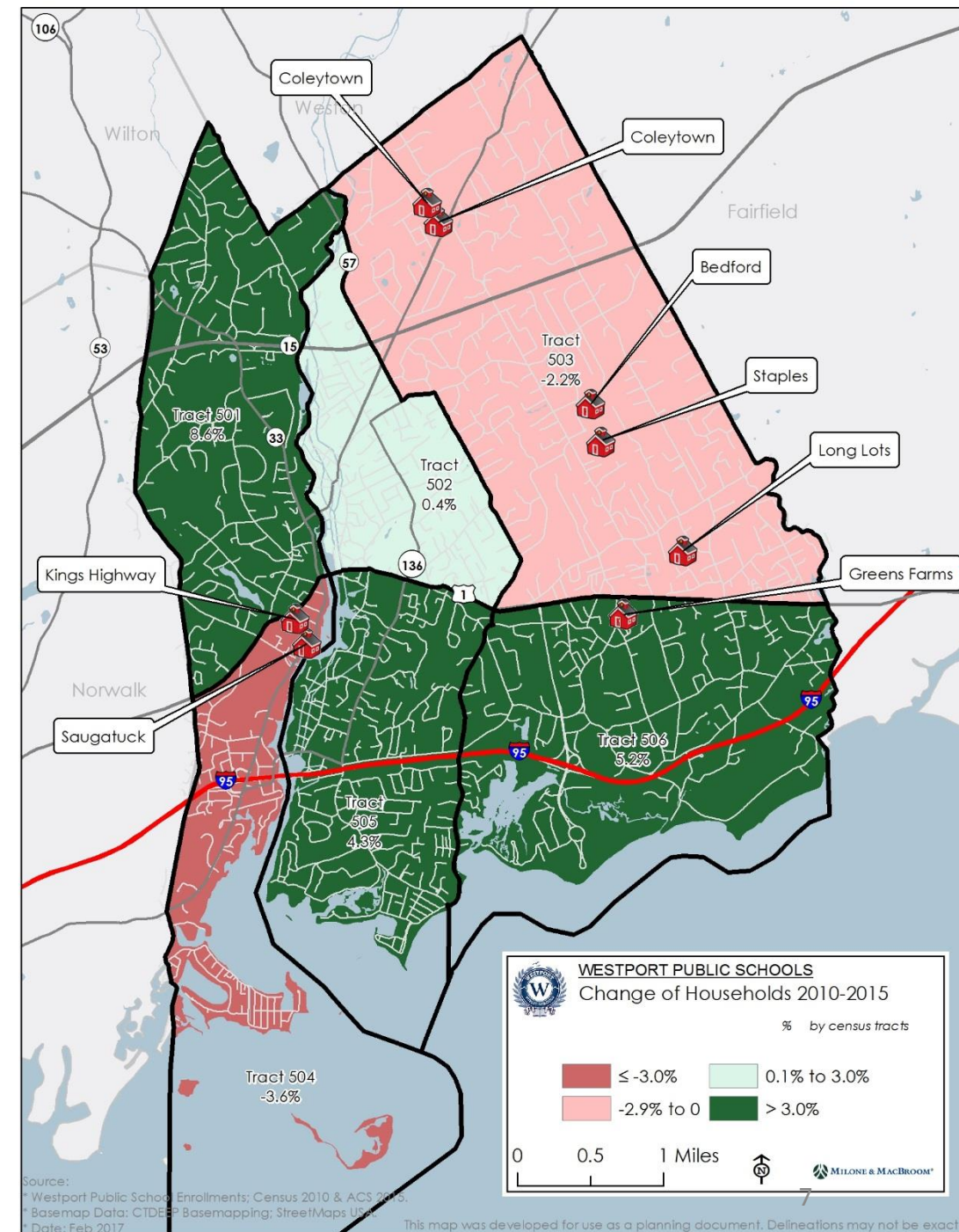
- Broadly, the northeast section of Westport (Long Lots and Coleytown districts) has the largest number of total households.





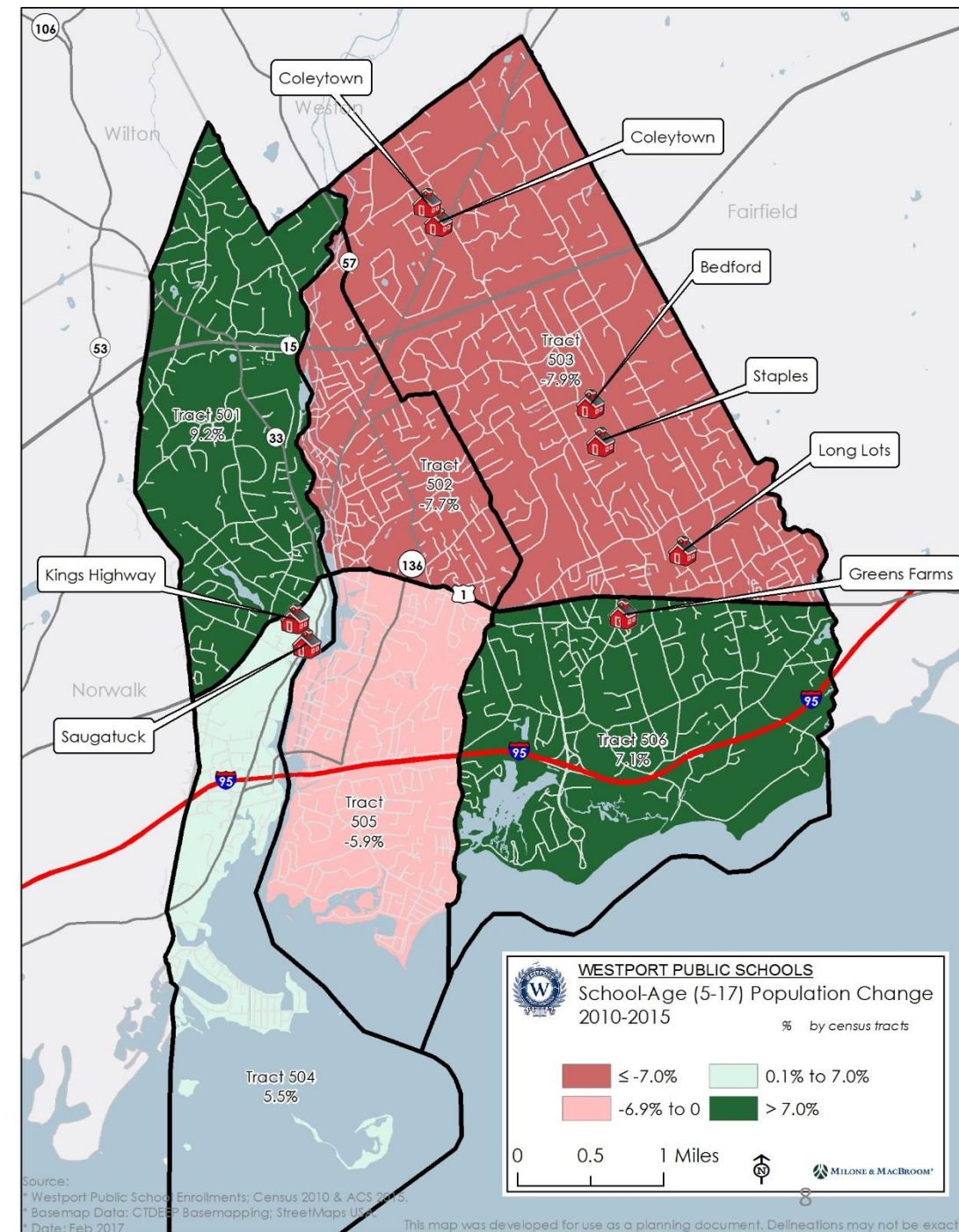
# Population

- However, this area is experiencing a slight loss in households over time
- The area west of the Saugatuck River and north of Rte 1, and the southeast section of Westport are experiencing the greatest rate of growth over time



# Population

- This trend is shown as well in different demographic subgroups
- While the northeast section has experienced a 2.2% decline in total households, the population of school-aged children has declined 7.9% in the same area

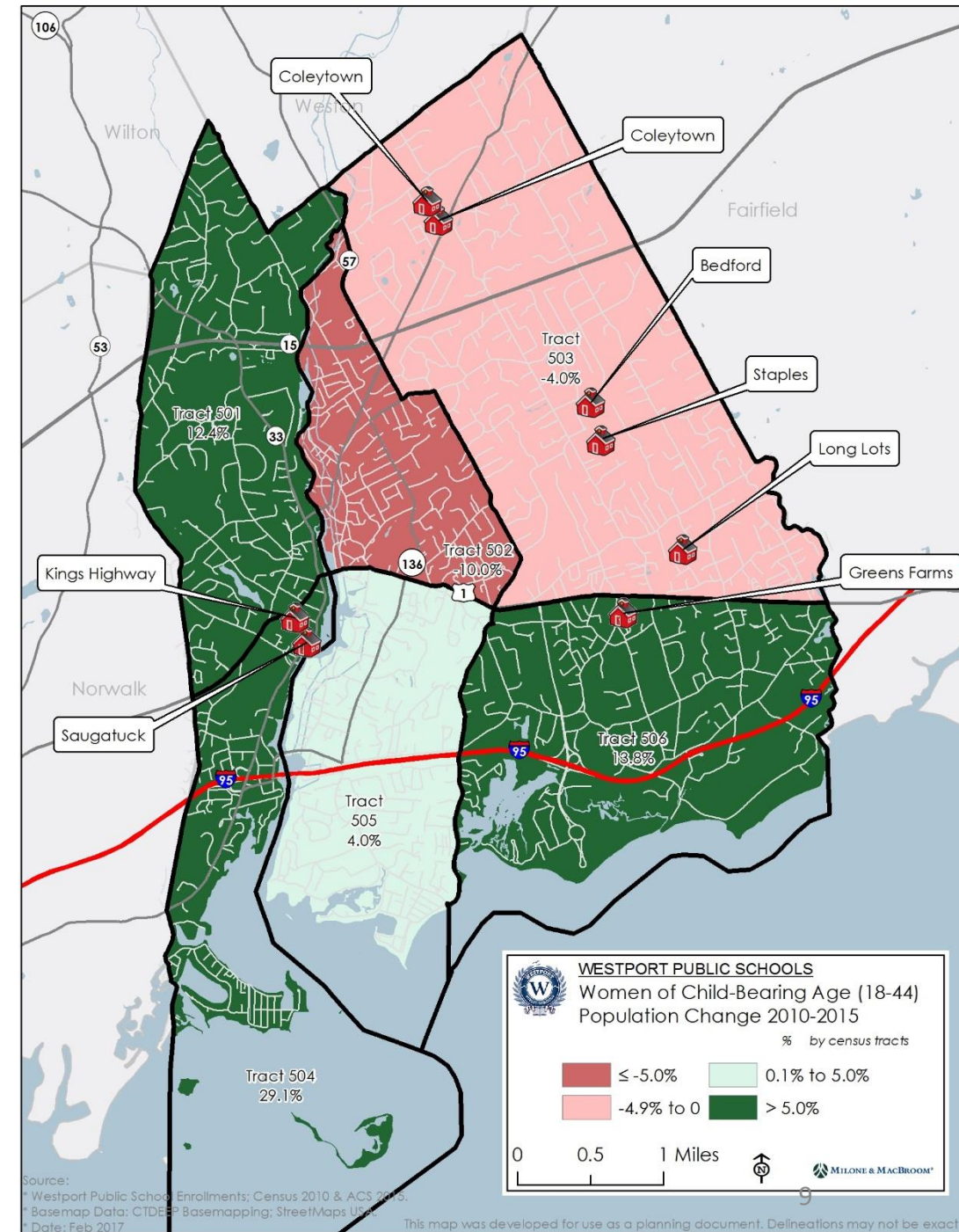
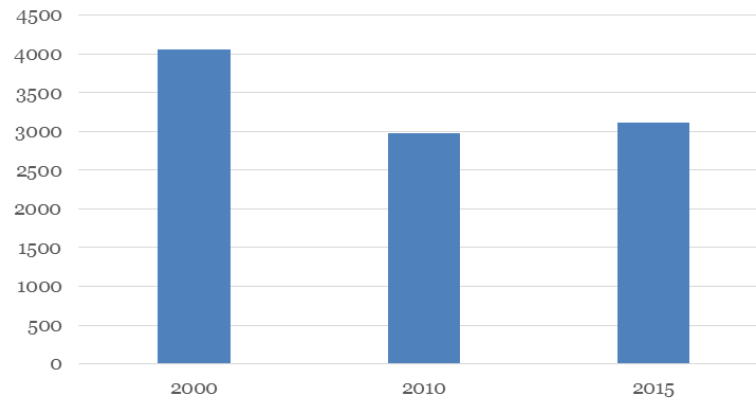




# Population

- Northeast area (east of Saugatuck River and north of Rt. 1) has also seen a decline of 4% in women of child-bearing age (18 to 44)
  - Town-wide, this population has grown 4% from 2010 but remains down 23% from 2000

**Females of Child-Bearing Age (18-44)**

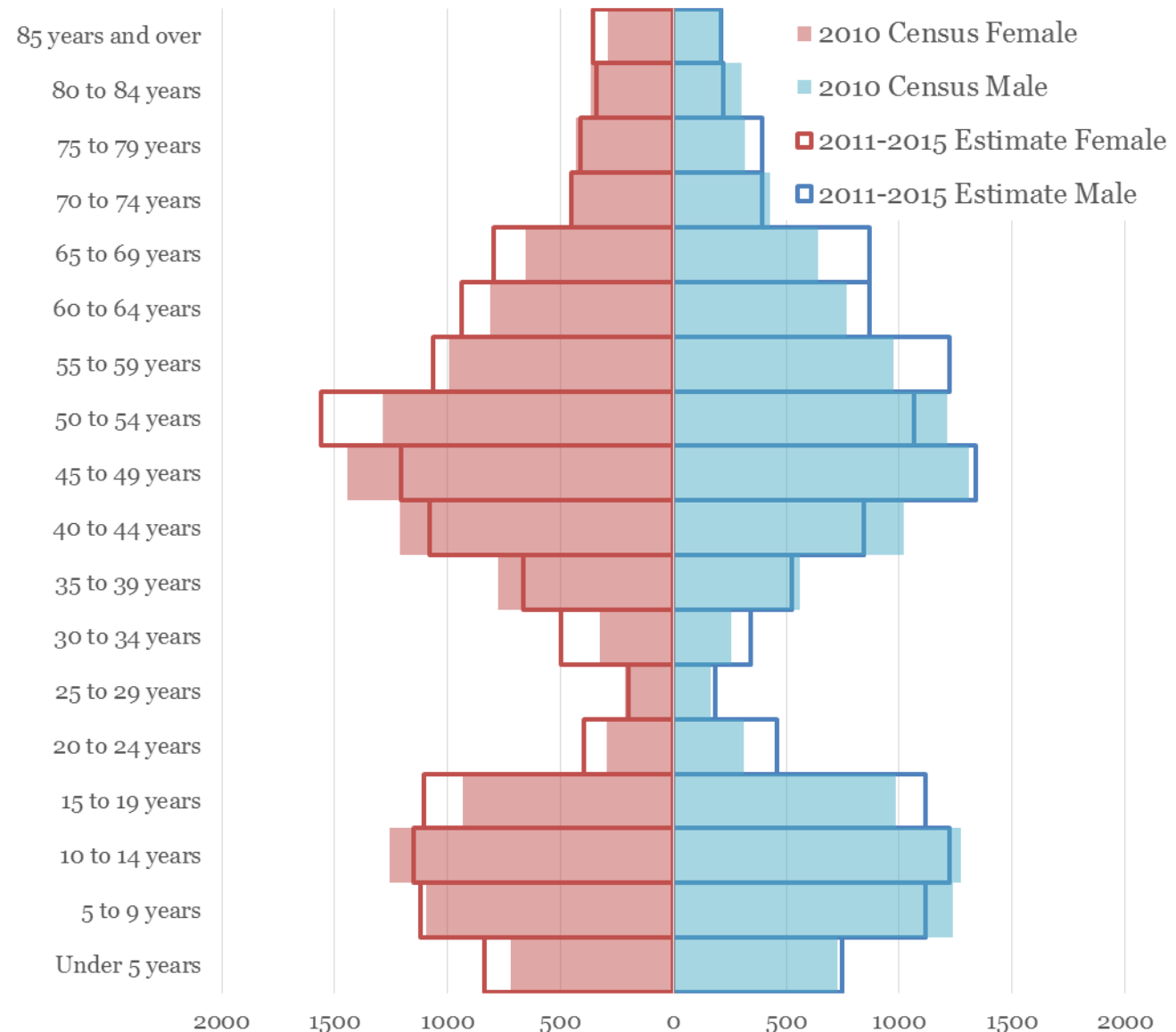


# Demographics

- Declines in school-age children and younger families vs. a growing older population can be seen in Westport's population structure
- Westport's median age has risen from 41.4 in 2000 to 44.6 in 2010 and further increased to 45.1 per ACS 2015 estimates



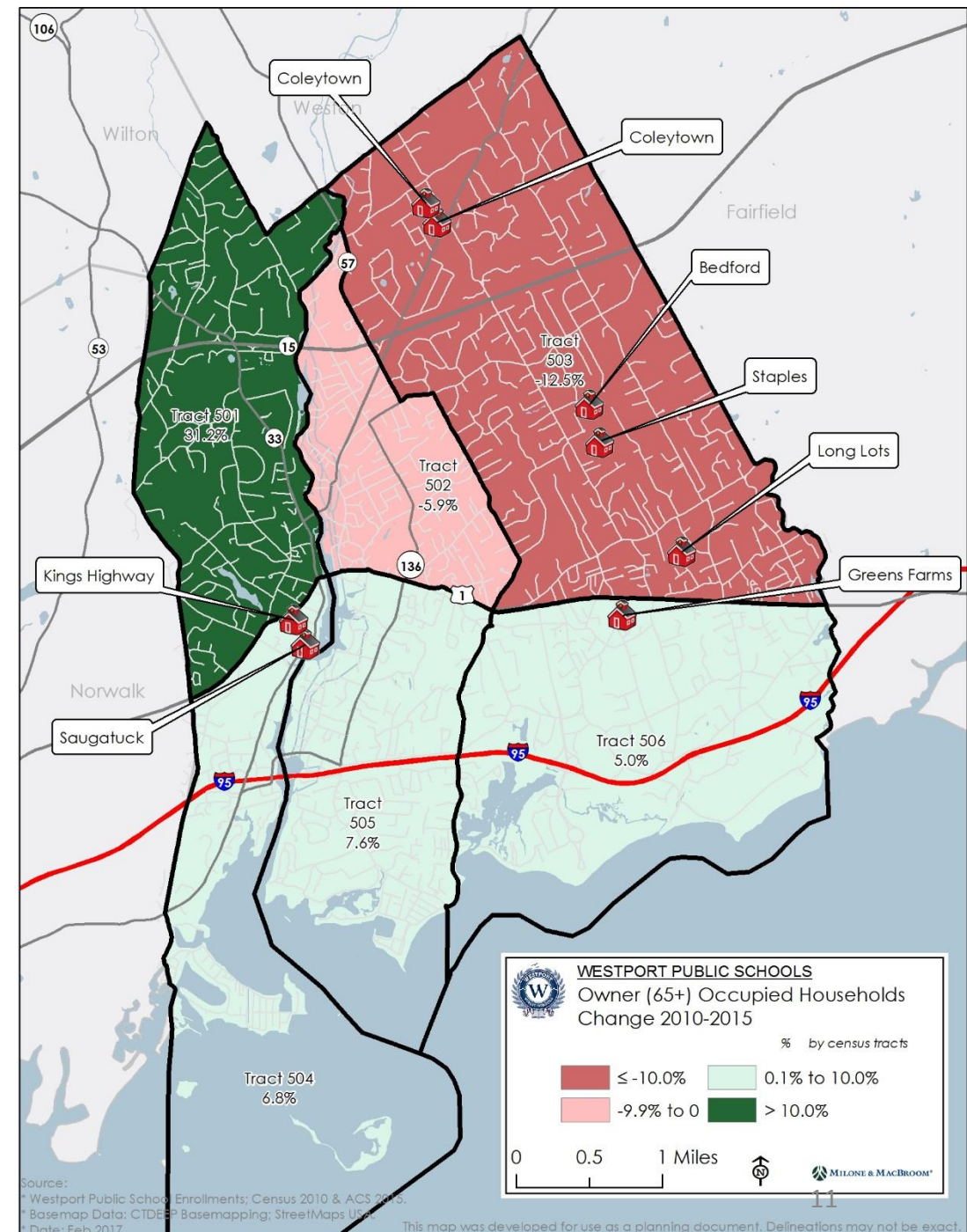
Change in Sex and Age in Westport, 2010 - 2015



Source: US Census 2010 and ACS Estimates 2011-2015

# Demographics

- Growth in homeowners over 65 years of age in Kings Highway, Greens Farms, and southern Saugatuck neighborhoods a leading indicator of potential housing turnover towards younger homebuyers with children





# Demographics

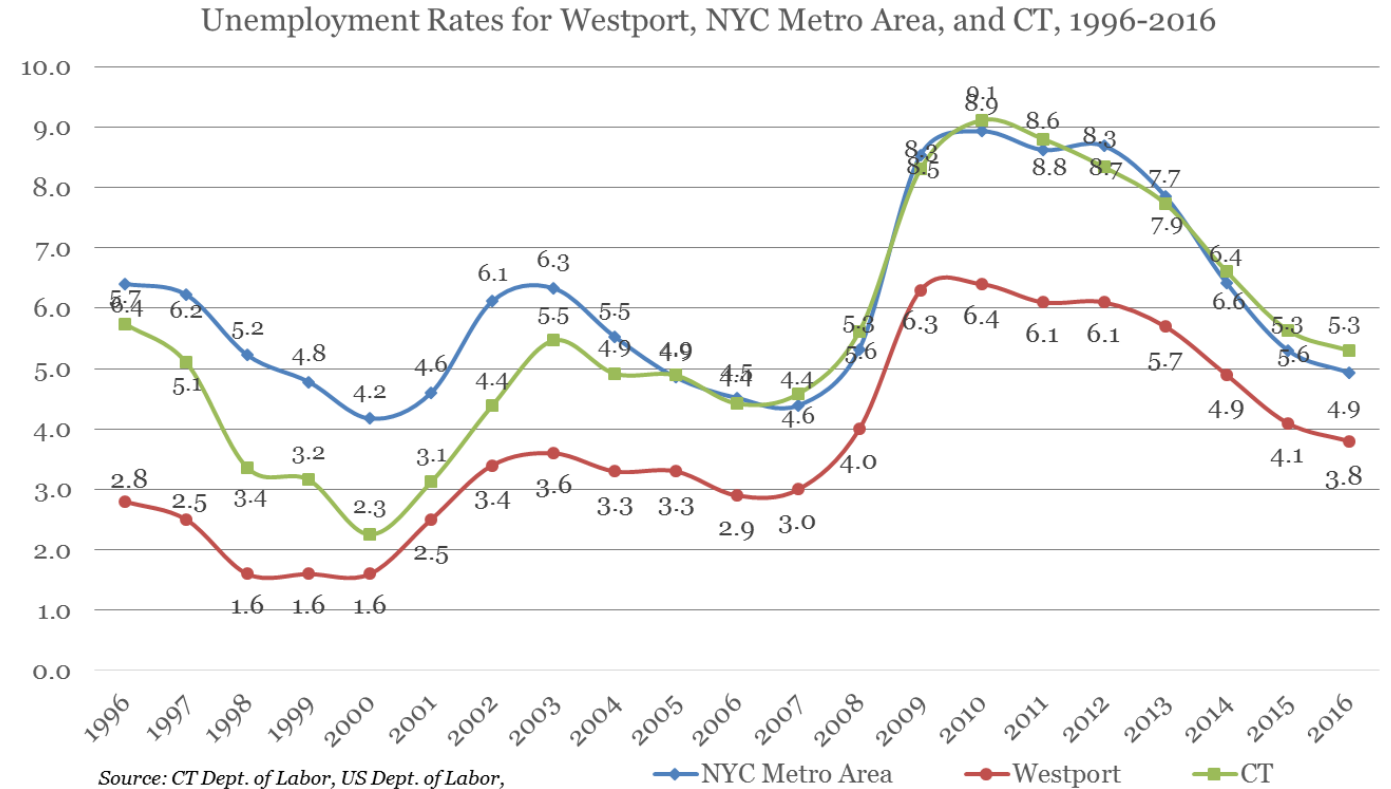
- Total number of households has been roughly stable since 2000
- Greatest change is an increase of householders aged 65+ living alone
- Average family size up slightly from 2000

HOUSEHOLDS BY TYPE	2000	2010	2015 est.	% Change 2000-2010	% Change 2010-2015
Total households	9,586	9,573	9,740	-0.1%	1.7%
Family households (families)	7,166	7,233	7,380	0.9%	2.0%
With own children under 18 years	3,684	3,941	3,868	7.0%	-1.9%
Nonfamily households	2,420	2,340	2,360	-3.3%	0.9%
Householder living alone	1,994	1,990	1,938	-0.2%	-2.6%
Householder 65 years and over	848	989	1,062	16.6%	7.3%
Average household size	2.7	2.7	2.8	2.6%	1.8%
Average family size	3.1	3.2	3.2	3.2%	0.6%



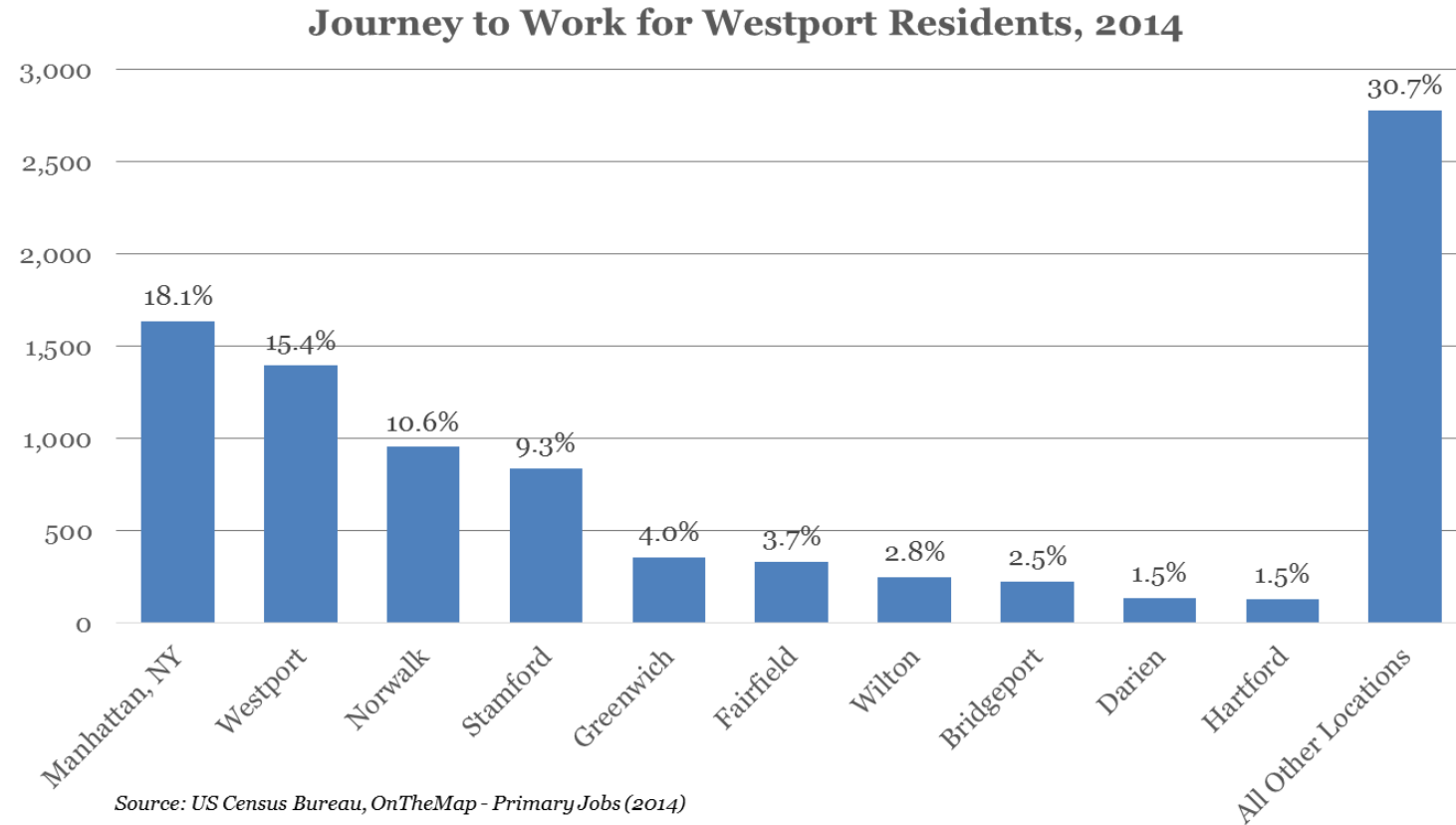
# Unemployment Trends

- Westport rates of unemployment have consistently remained well below both CT and NYC metro area averages



# Journey to Work

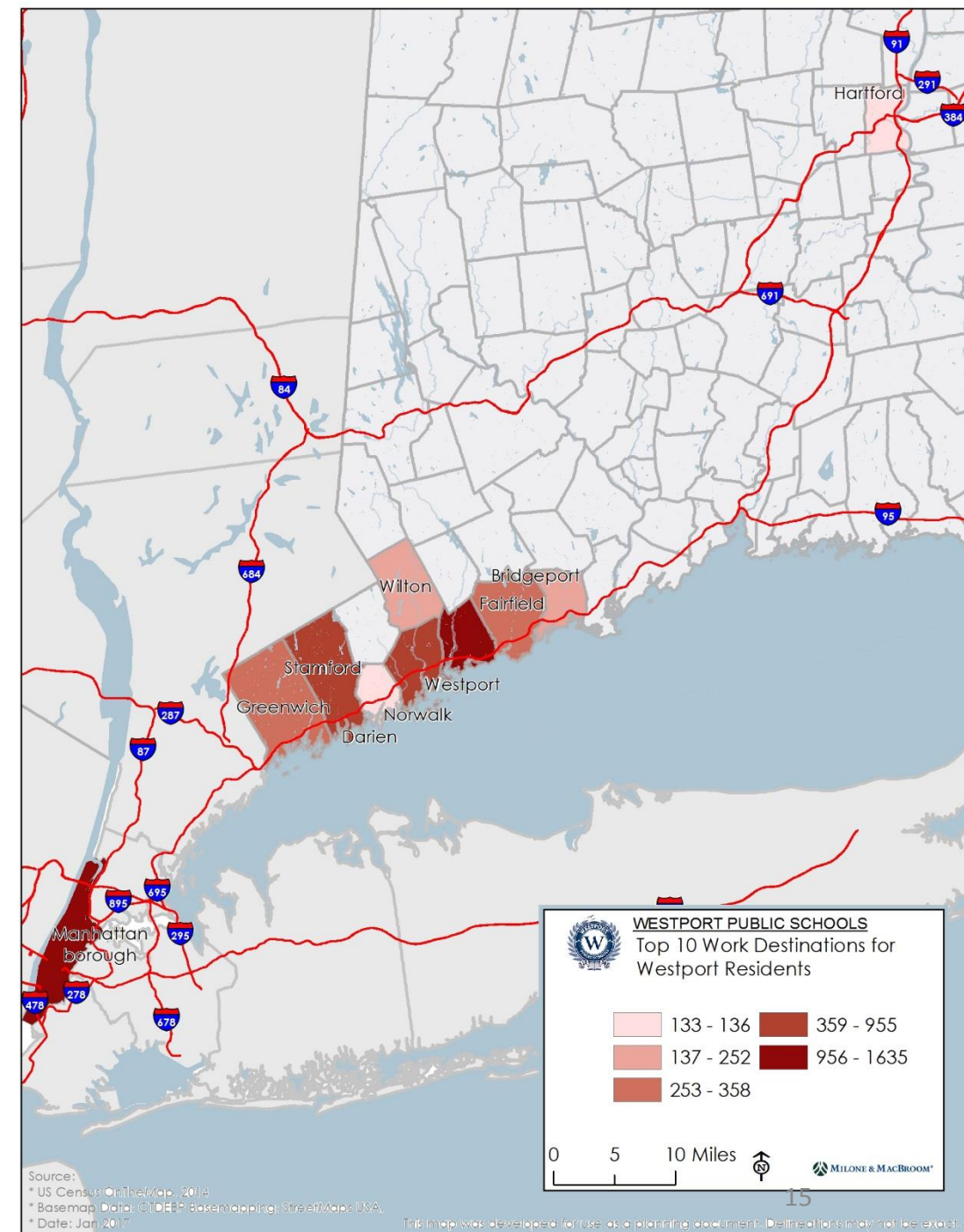
- Census aggregation of job locations shows 53% of residents commuting locally or to NYC, Norwalk, or Stamford
- Local economy tied to NYC metro and Lower Fairfield County





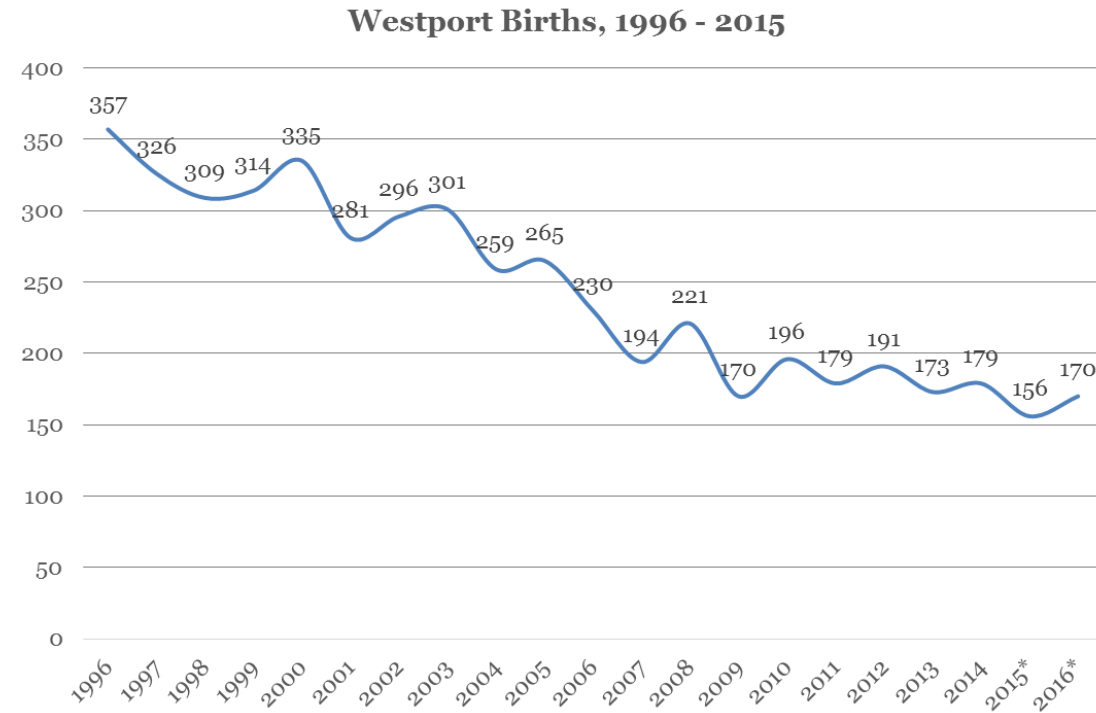
# Journey to Work

- Availability of commuter rail provides Westport residents with strong access to Manhattan and other shoreline employment centers



# Births

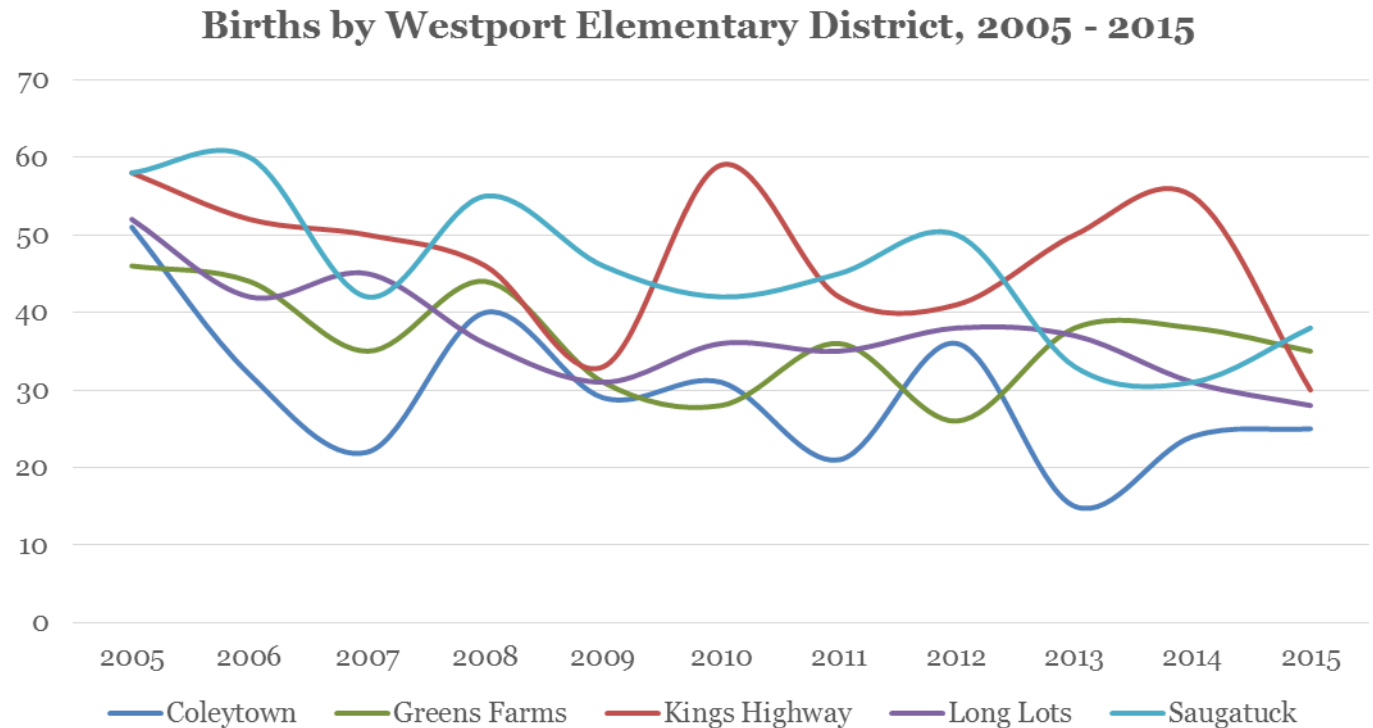
- Births in Westport have been declining, reflecting a CT and national trend
- Large influence of the aging Baby Boom generation, and a trend toward later family formation and fewer children per family
- 2015 and 2016 births are preliminary totals and may be adjusted by DPH based on out-of-state data



Source: CT Dept. of Public Health (2016). \*Birth records for 2015 and 2016 are preliminary; 2016 birth records are based on in-state records only and adjusted for out of state births based on historic averages.

# Births

- Over the past ten years, Kings Highway and Saugatuck have experienced larger shares (23-24%) of townwide births, while Coleytown has had the smallest share (15%)
- King's Highway experienced marked birth decline from 2014 to 2015





# Birth Projections

- Births typically correlate well with measures of local/regional unemployment and housing market activity from the recent past
- Developed multiple regression model to predict future births based on current and lagged sales and local unemployment rate for high, medium, and low-growth scenarios
- Good model fit ( $R^2 = 0.983$ ) and significance ( $F < 0.001$ )

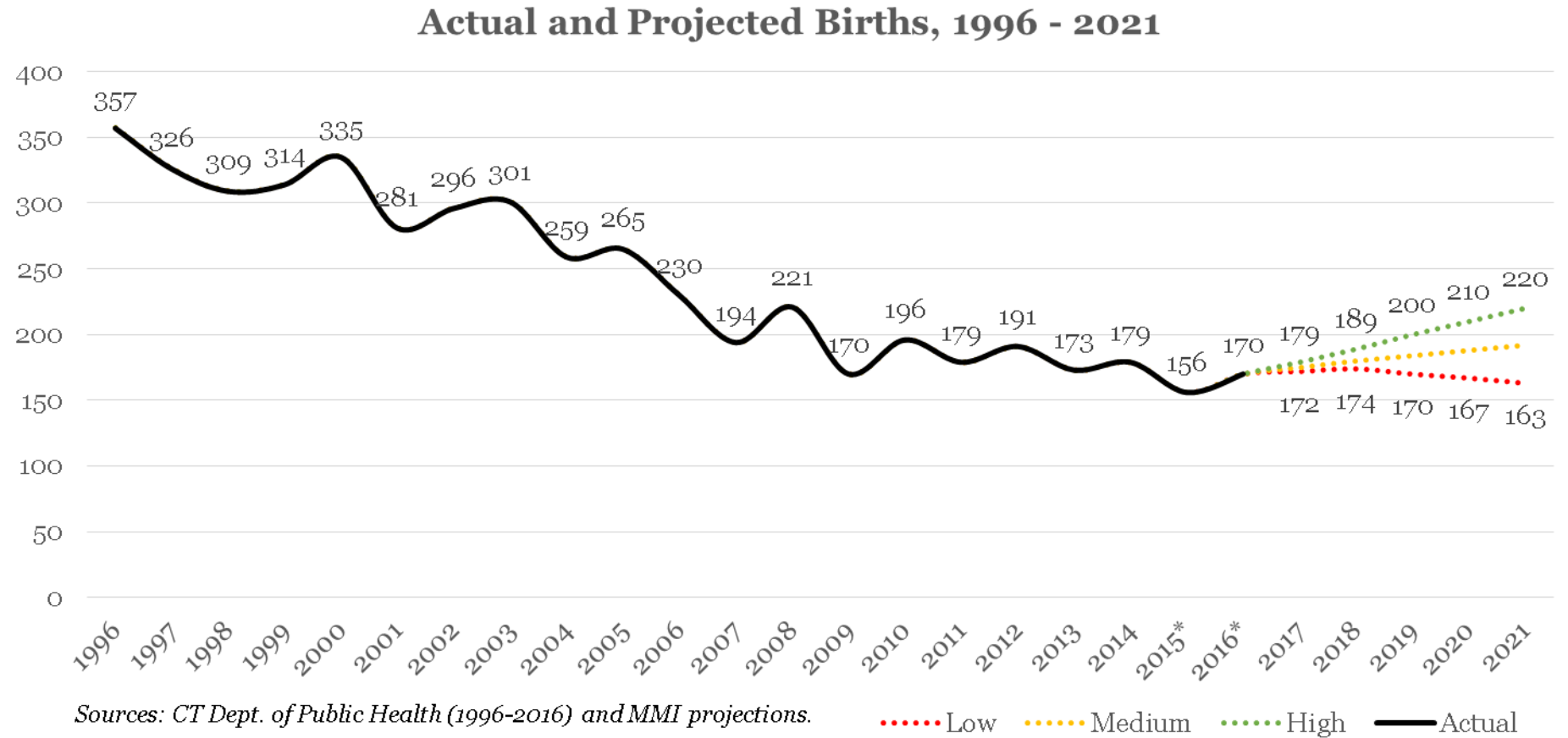
Regression Equation:

$$\text{Births}_Y = (UE_Y * 8.42) + (UE_{Y-2} * -17.79) + (\text{Sales}_Y * 0.49) + (\text{Sales}_{Y-2} * 0.08)$$

<b>Scenario</b>	<b>High</b>	<b>Medium</b>	<b>Low</b>
<i>Local Unemployment</i>	3.2% - 3.7%	3.5% - 3.7%	3.9% - 4.5%
<i>Home Sales</i>	386 - 450	376 - 400	350 - 366
<i>Births</i>	179 - 220	175 - 192	163 - 172

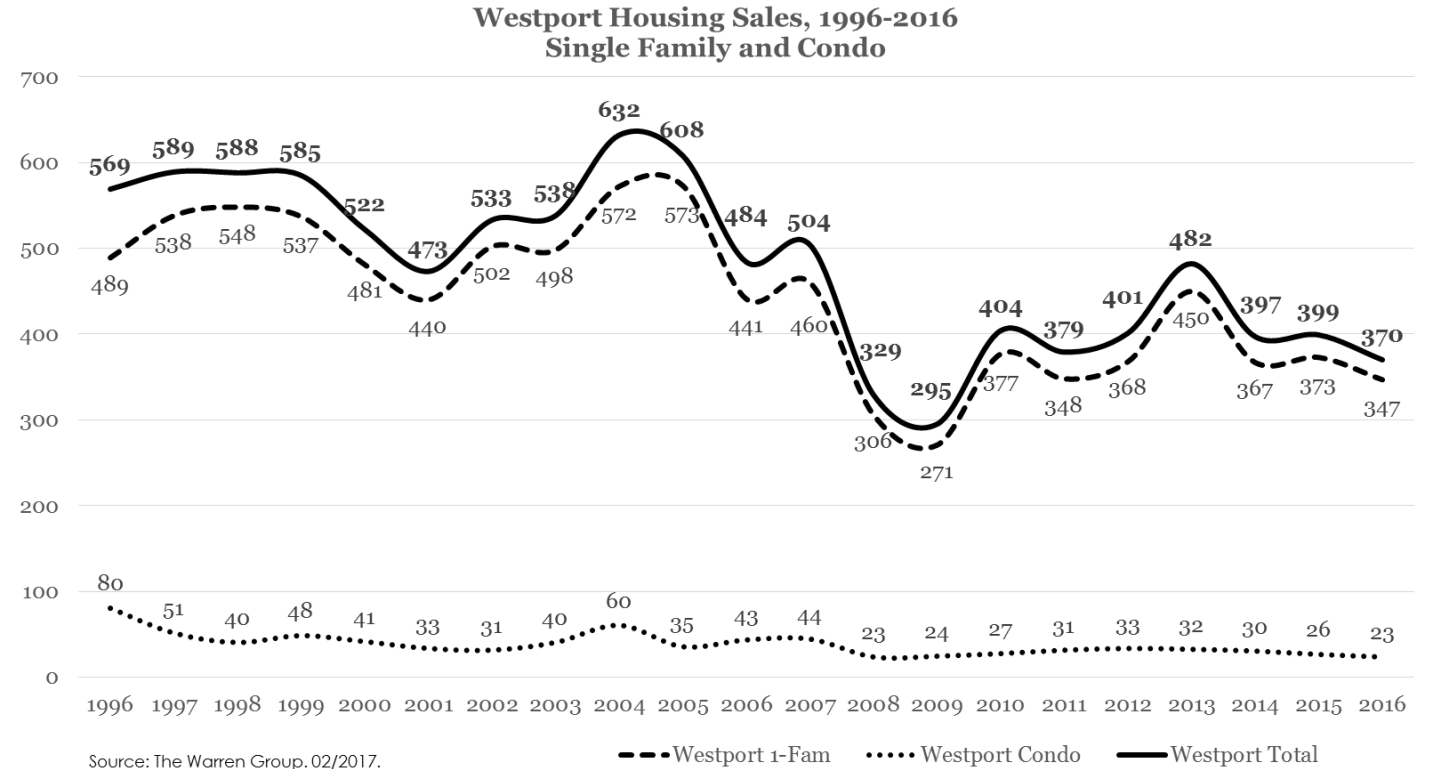


# Birth Projections



# Housing Market

- Home sales in Westport are down slightly year-over-year and from a temporary spike in 2013
- Post-recession “new normal” of 370-400 sales/year

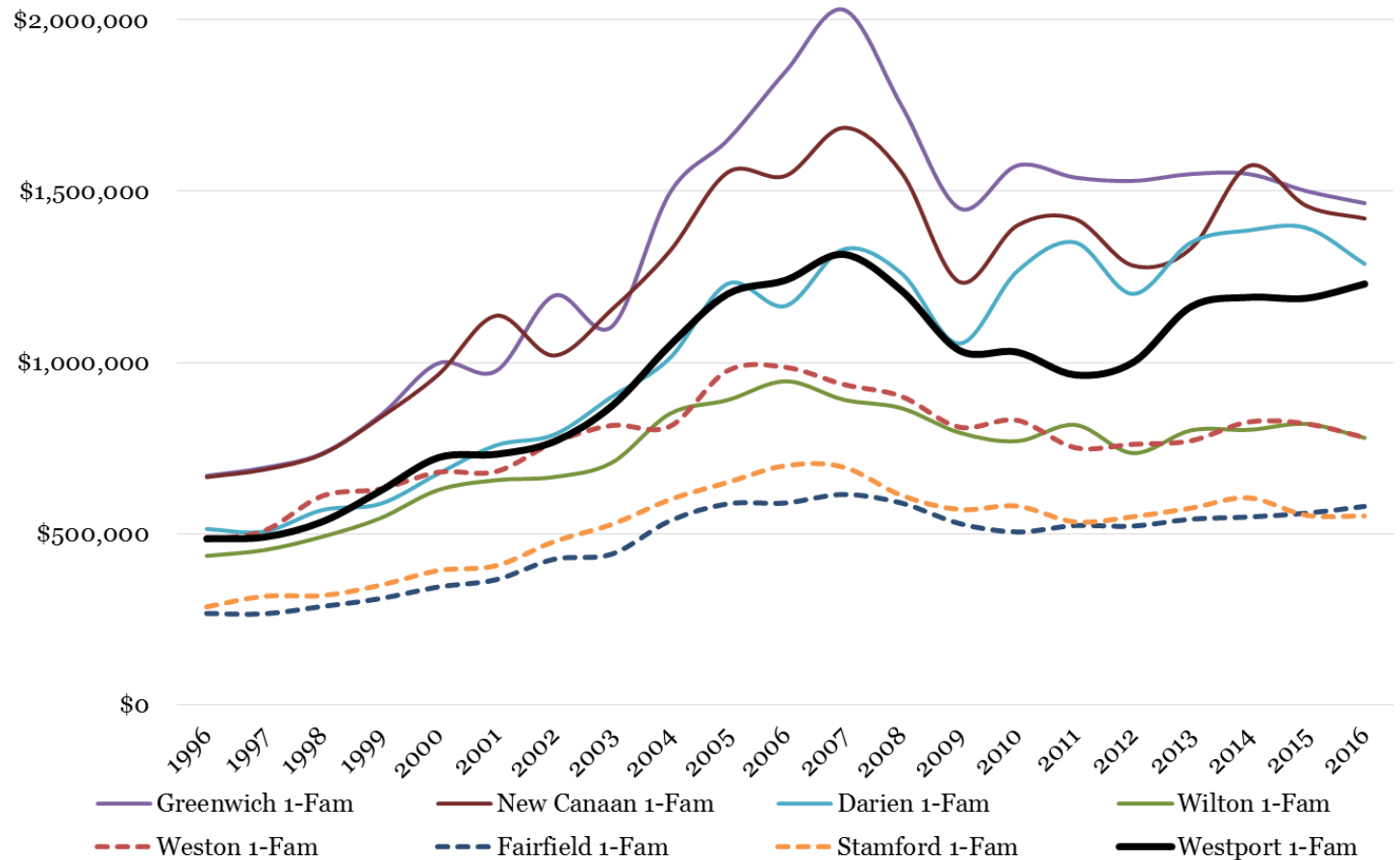




# Housing Market

- Median sales prices have been steady since 2013 at \$1.1 - \$1.2M
- 2016 also had 53 sales in the \$2-3M group
- Higher-end homes typically take longer to sell (3+ years for a \$3M home)

Median Housing Sales Price, 1996-2016  
Single Family



Source: The Warren Group (2017)



# Housing Market

- Discussion with local Board of Realtors representative (Cheryl Scott-Daniels) noted substantial uncertainty in the market driven by political climate and corporate relocations – challenging to forecast market in 2017 and beyond
- Buyers heavily weighted towards families with young children
  - Higher price points: NYC-driven (Brooklyn in particular)
  - Lower price points: in-state moves
- Greater challenges in moving large, high-maintenance properties vs. stronger market for high-amenity locations (views, walkable, near train station and highway) and new construction



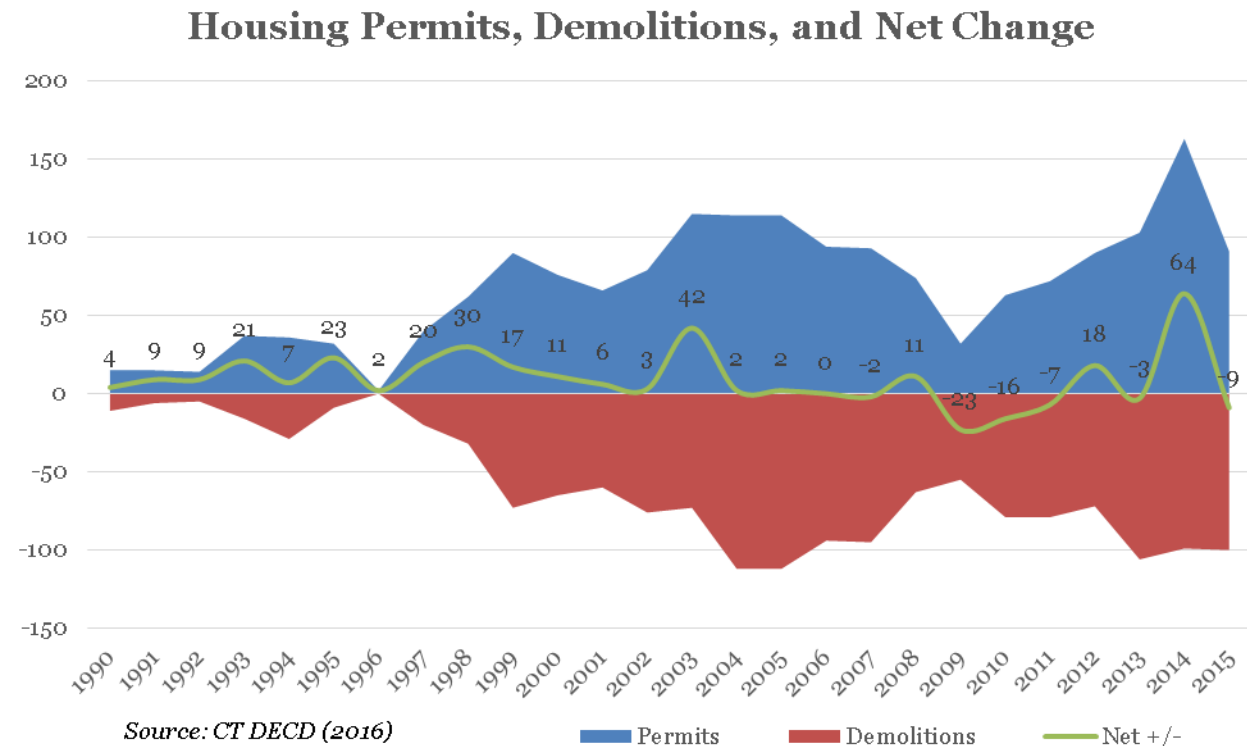
# Housing Market

- Real estate market observations (Realtor Judy Szablak)
  - 2016 experienced a slower market than in recent years
  - Promising prognosis for Q2 2017
  - Large inventory of high-end homes (\$3-5M and up) with long average times on the market
- Current POCD outreach efforts have brought attention to perceived out-of-scale rebuilding of existing homes as an issue to be monitored/addressed



# Housing Trends

- 2014 was a peak year for new construction
  - 163 housing permits
  - 99 demolitions
  - 64 new units on net
- Teardown/rebuilds predominate in a largely built-out community: in 9 of the past 12 years, Westport has had near-zero or negative net growth in housing stock



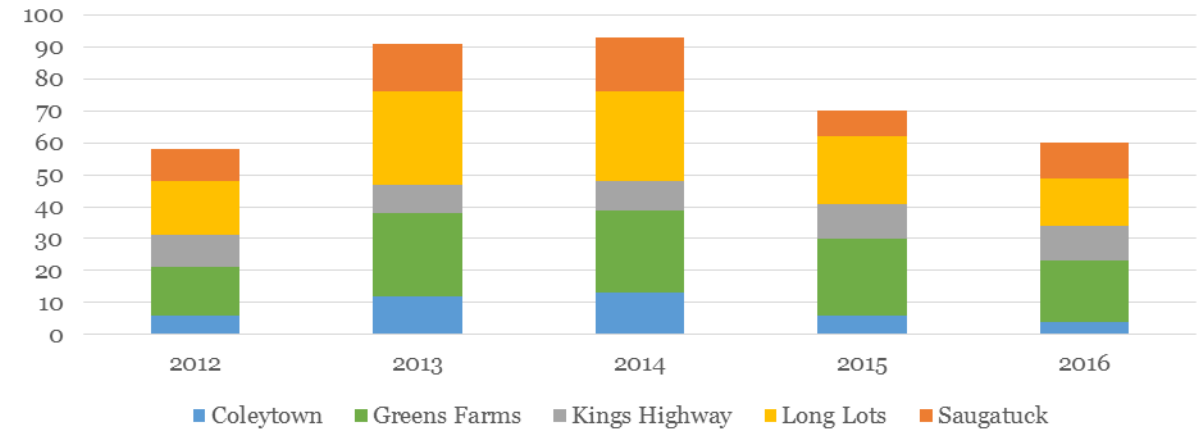


# Teardown Activity

- Greatest teardown/ new build activity in Greens Farms, Long Lots
- Primarily replacement of more modest 1940s-1970s homes with new homes 5-6 bedroom and larger
- 276 current PK-12 students matched to demolition + single family permits issued since 2012



New Single Family Residences from Teardown Activity, 2012-2016



Students Attributable to Teardown/Newly Built Single Family Homes (2012 - 2016)

School Year	Year Built					Total
	2012	2013	2014	2015	2016	
2012-13	24					24
2013-14	34	67				101
2014-15	40	88	47			175
2015-16	48	102	63	21		234
2016-17	54	110	74	30	8	276

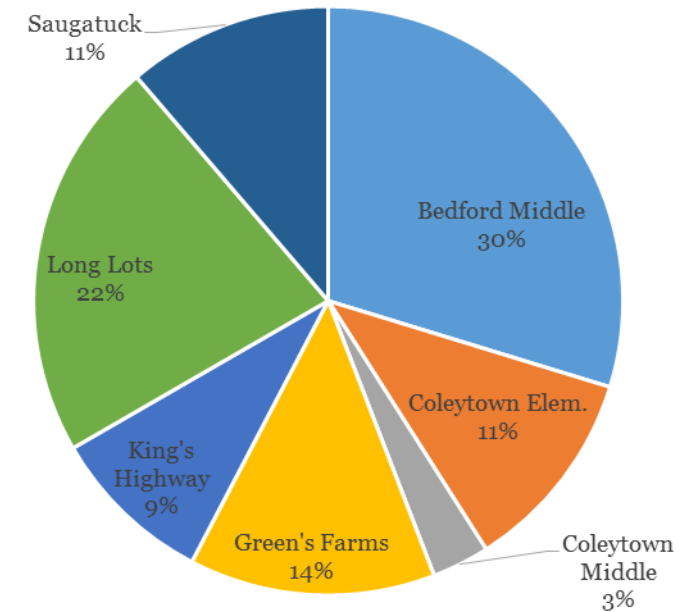
Source: Westport Building Department (2017), MMI analysis

# Teardown Activity

- At the elementary and middle school levels, a larger share of students are generated by teardown activity in the Long Lots, Greens Farms, and Saugatuck areas
- Of the 276 students tied to recent teardowns in 2016-17, only 22% (60 students) are new to the district



**2016-17 K-8 Students Attributable to Teardown/Newly Built Single Family Homes (By District)**

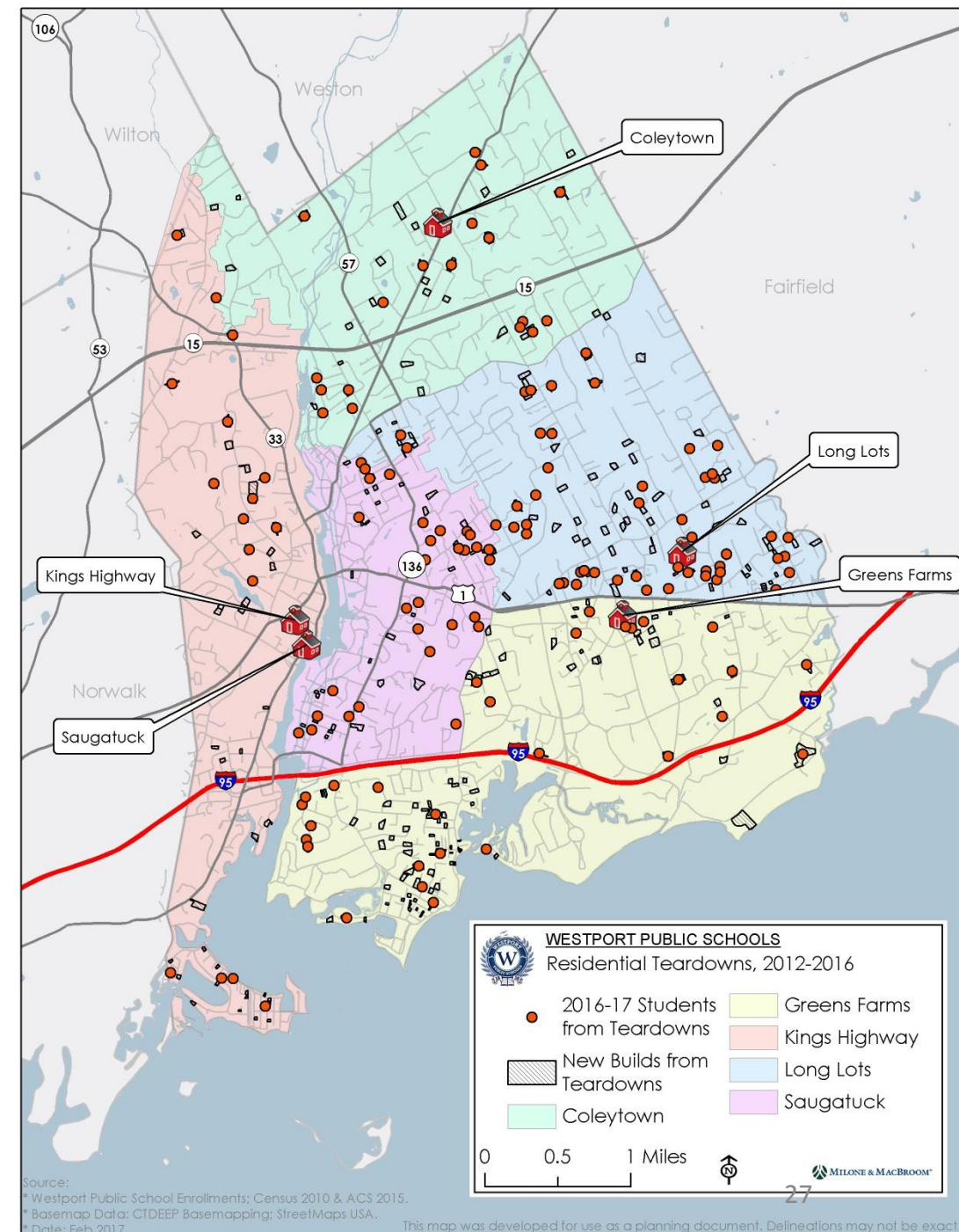


**Students Attributable to Teardowns: New vs. In-Town Moves (2016-17 School Year)**

Student Type	Year Built					Total
	2012	2013	2014	2015	2016	
New to District	9	17	17	12	5	60
All Students	54	110	74	30	8	276
% New to Dist.	17%	15%	23%	40%	63%	22%

# Teardown Activity

- Teardown and new build activity that generates students is most tightly clustered east of Downtown Westport and along Route 1 and north into Long Lots neighborhoods

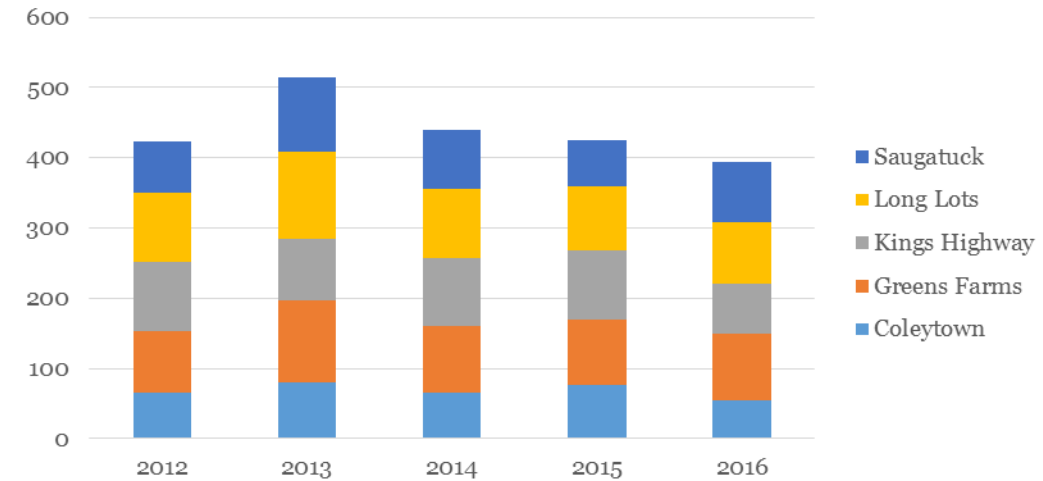


# Housing Market

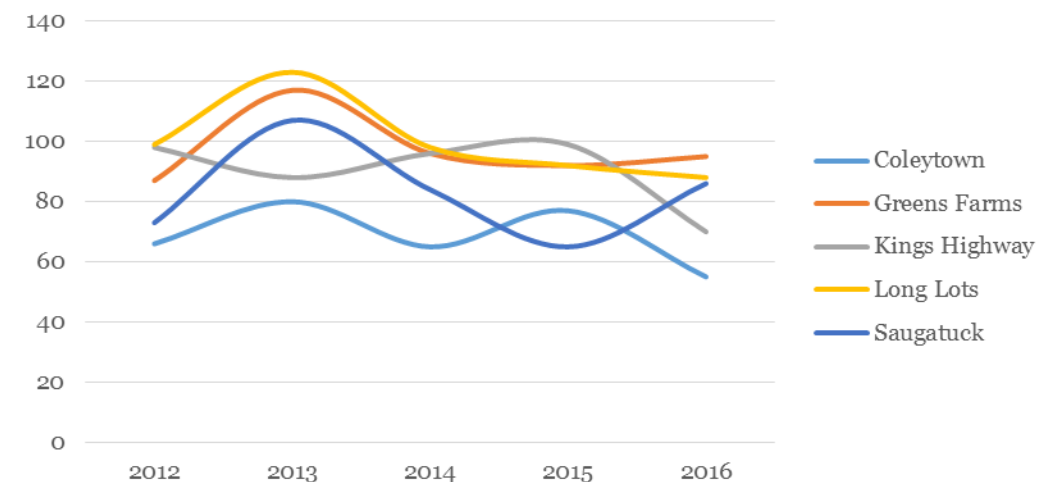
- In 2016, Greens Farm and Long Lots school districts had the largest share of home sales
- Share of sales in Kings Highway and Coleytown school districts have fallen, and sales in Saugatuck have risen



Home Sales by Elementary District



Home Sales by Elementary District



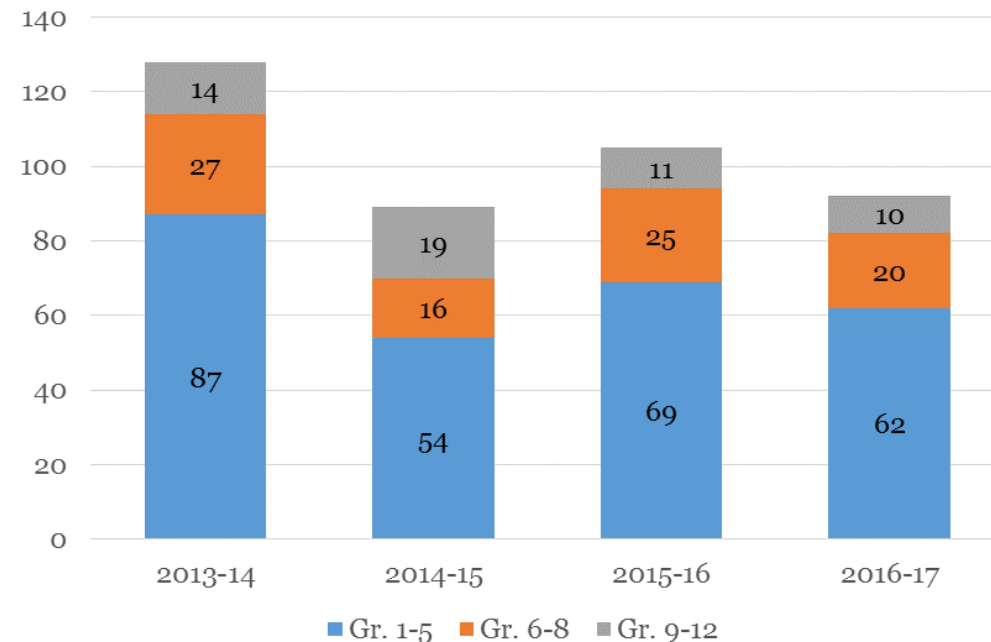
*Note: by-district home sales totals differ slightly from town-wide totals due to differences in reporting methodology.*



# Housing Market & Student Migration

- Matching of known home sales to students entering the system (unique ID not present in prior year) yields an estimate of students generated from housing turnover
- 92 students entered in 2016-17 matched to a sale in the prior year, most at the elementary level
- Over the past four years, an average of 104 students can be tied to prior-year sales

New to District Students Attributable to Prior Year Home Sales (2013-14 to 2016-17)



# Student Migration

- Not all student migration is attributable to home sales—also affected by rentals, movement in/out of non-WPS schools, family moves without home sales, etc.
- Comparing in- and out-migration shows consistent net positive effect at elementary and middle grades



**Net Year-to-Year Districtwide Migration**  
*Grade Grouping*

<i>Years</i>		1-5	6-8	9-12
2015-16 to 2016-17	In-Migration	169	72	70
	Out-Migration	110	65	77
	<b>Net Impact</b>	<b>59</b>	<b>7</b>	<b>-7</b>
2014-15 to 2015-16	In-Migration	156	74	70
	Out-Migration	103	61	67
	<b>Net Impact</b>	<b>53</b>	<b>13</b>	<b>3</b>
2013-14 to 2014-15	In-Migration	171	61	86
	Out-Migration	102	52	74
	<b>Net Impact</b>	<b>69</b>	<b>9</b>	<b>12</b>
2012-13 to 2013-14	In-Migration	188	84	79
	Out-Migration	104	71	99
	<b>Net Impact</b>	<b>84</b>	<b>13</b>	<b>-20</b>
<i>Average Net Impact:</i>		<b>66</b>	<b>11</b>	<b>-3</b>

# Internal Migration

- At the elementary and middle school level, an average of 27 existing students moved between Westport schools each year over the past four years

**Elementary and Middle Grade Internal Student Moves,  
2013-14 to 2016-17**

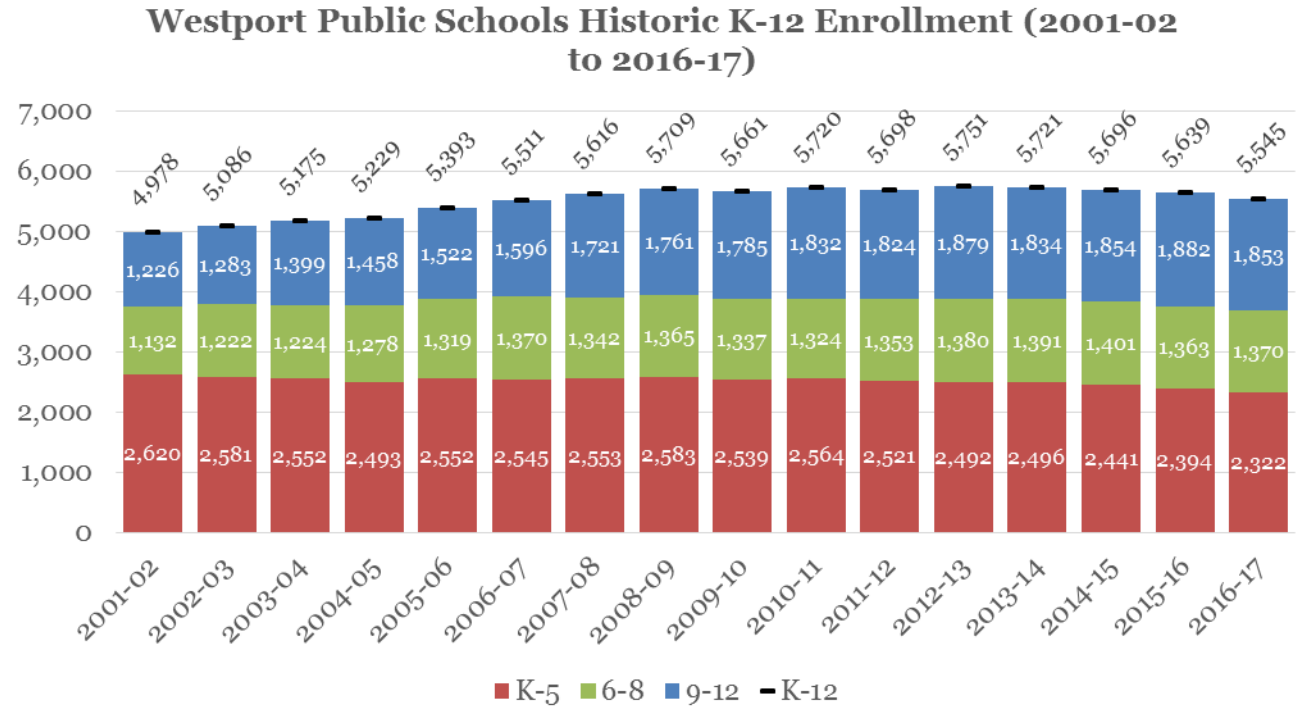
School	Student Moves Out	Student Moves In	Net Change
<i>Elementary</i>			
Greens Farms	16	28	12
Kings Highway	25	14	-11
Long Lots	15	27	12
Coleytown Elem.	14	19	5
Saugatuck	28	10	-18
<i>Middle</i>			
Bedford	4	6	2
Coleytown Middle	6	4	-2

- Pattern of more movement out of Saugatuck and Kings Highway, and into Greens Farms and Long Lots
- Limited movement at the middle school level



# Current & Historic Enrollments

- Westport's overall enrollment rose from ~5,000 students (K-12) in the early 2000s to a steady 5,700 ( $\pm 50$ ) during the post-Recession era
- The past few years have seen a downward trend driven primarily by declining K-5 enrollment

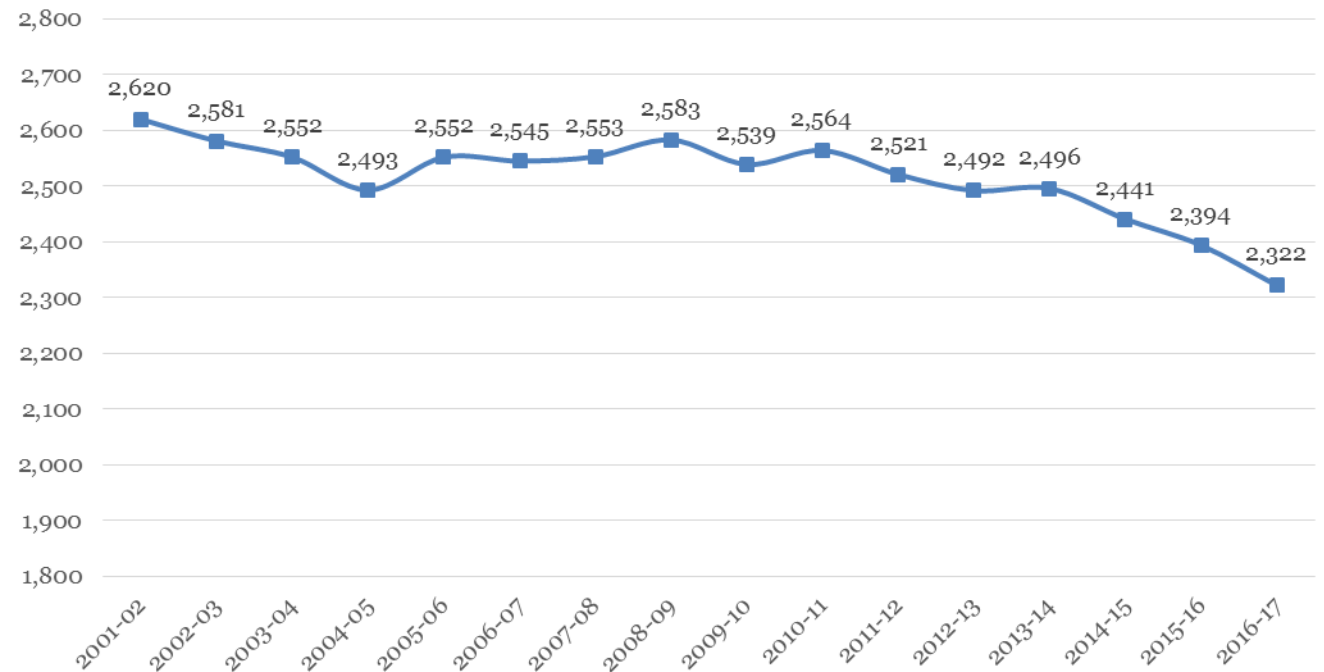




# Current & Historic Enrollments

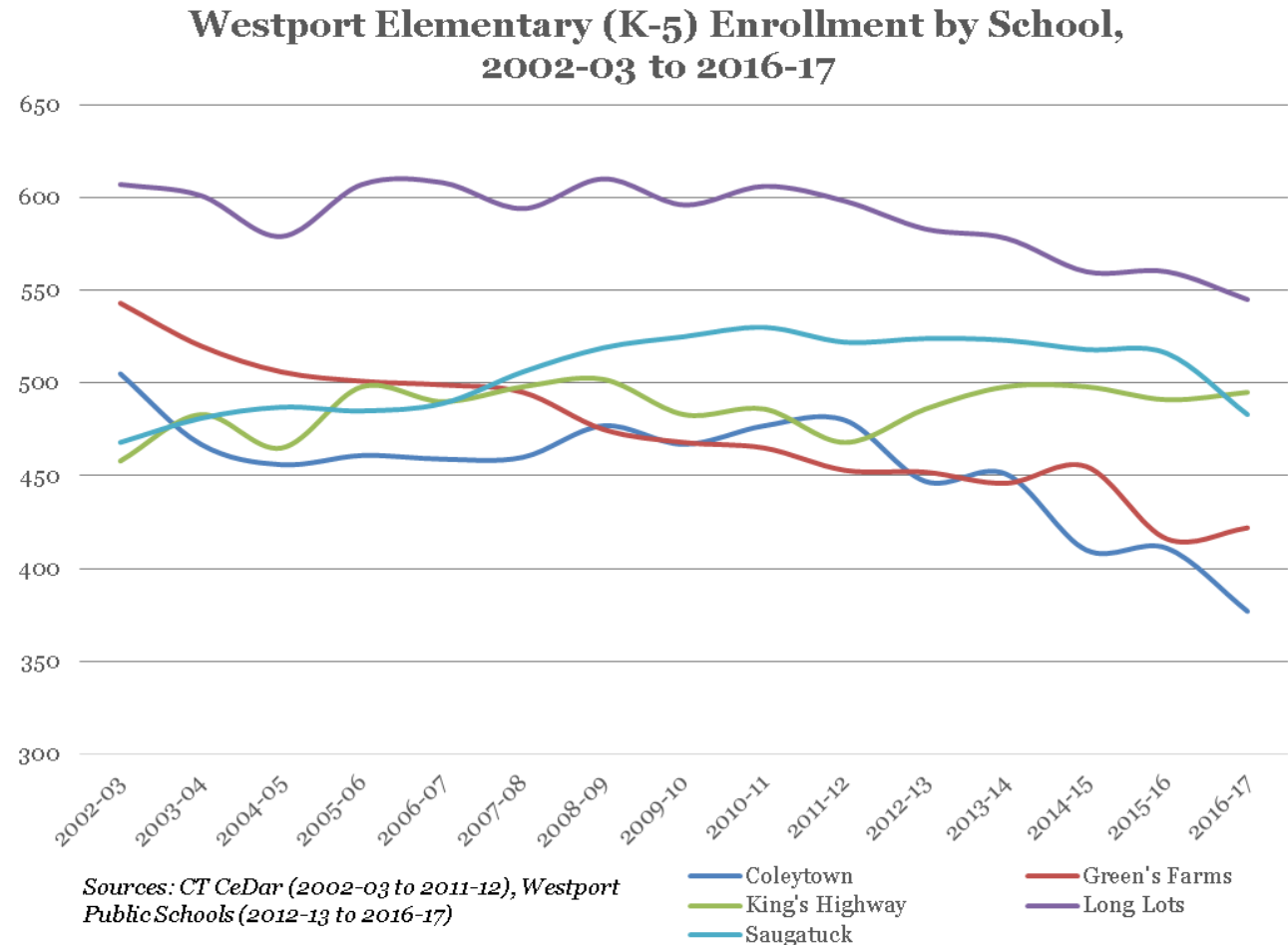
- K-5 enrollment declined slightly in early 2000s, held steady at ~2,550 students through 2010-11, and has fallen by over 240 students in the six following years

Westport Public Schools Historic K-5 Enrollment  
(2001-02 to 2016-17)



# Current & Historic Enrollments

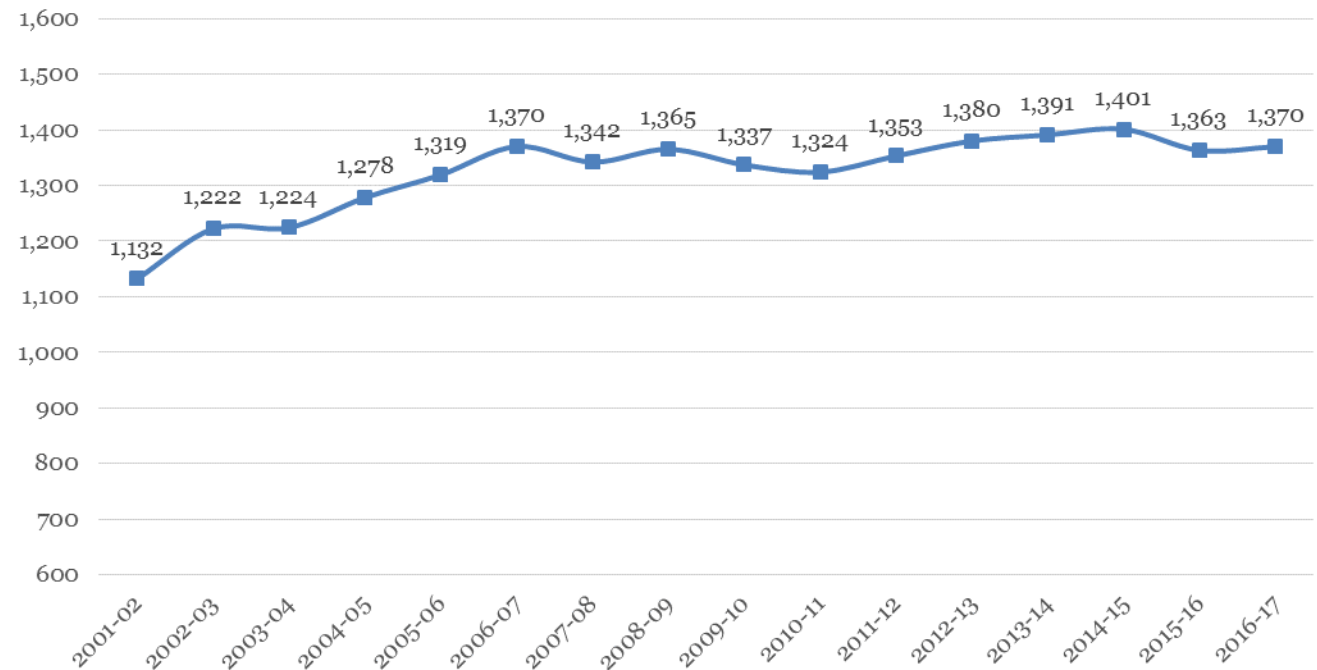
- Declines in elementary enrollment have been concentrated in Coleytown, Green's Farms, and Long Lots attendance zones
- Saugatuck remained high through post-Recession period, but dipped sharply in 2016-17
- King's Highway dipped post-Recession but has rebounded and held steady in the past few years



# Current & Historic Enrollments

- 6-8 enrollment experienced strong growth in the early and mid-2000s and early 2010s, with small downward adjustments in the post-Recession period and 2015-16

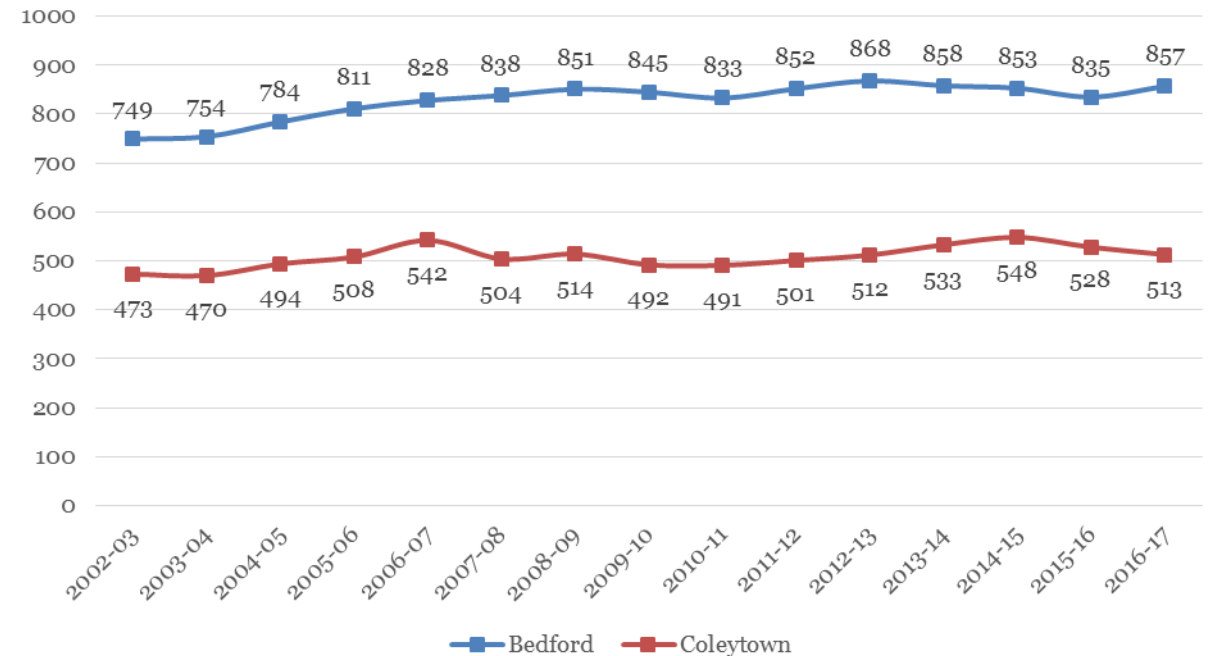
**Westport Public Schools Historic 6-8 Enrollment  
(2001-02 to 2016-17)**



# Current & Historic Enrollments

- Enrollment growth in the early 2000s was more pronounced at Bedford than Coleytown
- The impact of smaller entering K cohorts has not yet reached Westport's middle schools

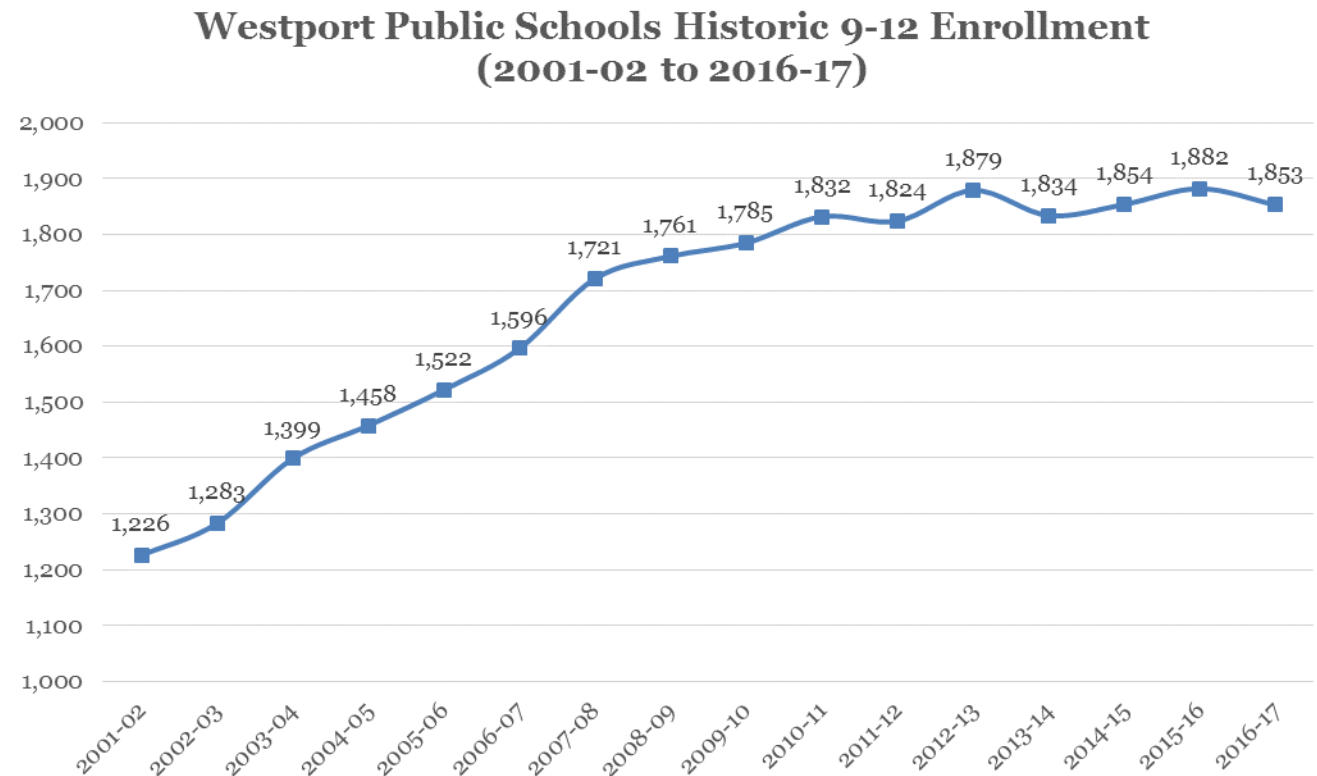
Westport Middle (6-8) Enrollment by School,  
2002-03 to 2016-17





# Current & Historic Enrollments

- Westport has experienced sustained and robust growth in high school enrollment from 2001-02 to 2012-13
- Staples has held steady for the last four years in the ~1,850 student range



# Current & Historic Enrollments

Westport Public School Enrollment History  
Pre-Kindergarten to 12th Grade

School Year	Birth Year	Births	K	1	2	3	4	5	6	7	8	9	10	11	12	PK
2001-02	1996	357	418	447	433	467	422	433	396	394	342	354	329	273	270	29
2002-03	1997	326	388	442	442	430	464	415	421	404	397	350	346	319	268	40
2003-04	1998	309	369	412	439	446	422	464	416	413	395	404	337	344	314	49
2004-05	1999	314	375	396	430	435	445	412	465	403	410	387	400	327	344	51
2005-06	2000	335	414	400	410	438	438	452	427	480	412	420	389	392	321	55
2006-07	2001	281	379	443	415	435	434	439	461	419	490	406	426	384	380	59
2007-08	2002	296	370	418	460	424	443	438	448	464	430	487	413	433	388	56
2008-09	2003	301	408	412	430	465	433	435	449	445	471	437	484	411	429	56
2009-10	2004	259	377	430	405	442	464	421	448	444	445	466	435	474	410	56
2010-11	2005	261	392	402	441	421	462	446	436	445	443	463	467	433	469	52
2011-12	2006	228	355	400	421	442	430	473	461	436	456	464	461	471	428	39
2012-13	2007	191	364	387	421	431	451	438	479	462	439	477	468	468	466	46
2013-14	2008	219	365	387	398	435	450	461	446	484	461	442	475	463	454	41
2014-15	2009	168	343	390	408	412	449	439	467	445	489	472	441	478	463	54
2015-16	2010	192	346	346	405	419	423	455	439	468	456	492	476	437	477	50
2016-17	2011	176	327	372	361	421	413	428	450	451	469	464	492	467	430	54

State Department of Education - CeDar Enrollment Reports for 2001-02 to 2011-12; Westport Public Schools 2012-13 through 2016-17.

- Examination of historic record shows declining size of entering cohorts beginning in 2011-12 (from average of 390 down to 350)
- Positive migration in elementary grades followed by net neutral migration through middle and high school grade levels



# Projection Methodology

- The cohort survival methodology relies on observed data from the recent past in order to project the near future
- Persistency Ratios calculated from historic enrollment data to determine growth or loss in a class as it progresses through school system
- Persistency Ratios account for the various external factors affecting enrollments: housing characteristics, residential development, economic conditions, student transfers in and out of system, and student mobility
- Changes in population, housing stock and tenure, and economic conditions help explain persistency ratios
- Recent instability in economic climate adds variability to enrollments, births, and residential mobility



# Persistence Ratios

Kindergarten through 12th Grade Persistence Ratios by School Year  
2002-2003 to 2013-14

Year	Birth-K	K-1	1-2	2-3	3-4	4-5	5-6	6-7	7-8	8-9	9-10	10-11	11-12	Elem. Migration
2002-03	1.1902	1.0574	0.9888	0.9931	0.9936	0.9834	0.9723	1.0202	1.0076	1.0234	0.9774	0.9696	0.9817	0.3%
2003-04	1.1942	1.0619	0.9932	1.0090	0.9814	1.0000	1.0024	0.9810	0.9777	1.0176	0.9629	0.9942	0.9843	0.8%
2004-05	1.1943	1.0732	1.0437	0.9909	0.9978	0.9763	1.0022	0.9688	0.9927	0.9797	0.9901	0.9703	1.0000	1.4%
2005-06	1.2358	1.0667	1.0354	1.0186	1.0069	1.0157	1.0364	1.0323	1.0223	1.0244	1.0052	0.9800	0.9817	2.7%
2006-07	1.3488	1.0700	1.0375	1.0610	0.9909	1.0023	1.0199	0.9813	1.0208	0.9854	1.0143	0.9871	0.9694	3.1%
2007-08	1.2500	1.1029	1.0384	1.0217	1.0184	1.0092	1.0205	1.0065	1.0263	0.9939	1.0172	1.0164	1.0104	3.7%
2008-09	1.3555	1.1135	1.0287	1.0109	1.0212	0.9819	1.0251	0.9933	1.0151	1.0163	0.9938	0.9952	0.9908	2.8%
2009-10	1.4556	1.0539	0.9830	1.0279	0.9978	0.9723	1.0299	0.9889	1.0000	0.9894	0.9954	0.9793	0.9976	0.7%
2010-11	1.5019	1.0663	1.0256	1.0395	1.0452	0.9612	1.0356	0.9933	0.9977	1.0404	1.0021	0.9954	0.9895	2.5%
2011-12	1.5570	1.0204	1.0473	1.0023	1.0214	1.0238	1.0336	1.0000	1.0247	1.0474	0.9957	1.0086	0.9885	2.3%
2012-13	1.9058	1.0901	1.0525	1.0238	1.0204	1.0186	1.0127	1.0022	1.0069	1.0461	1.0086	1.0152	0.9894	3.9%
2013-14	1.6667	1.0632	1.0284	1.0333	1.0441	1.0222	1.0183	1.0104	0.9978	1.0068	0.9958	0.9893	0.9701	3.7%
2014-15	2.0417	1.0685	1.0543	1.0352	1.0322	0.9756	1.0130	0.9978	1.0103	1.0239	0.9977	1.0063	1.0000	3.1%
2015-16	1.8021	1.0087	1.0385	1.0270	1.0267	1.0134	1.0000	1.0021	1.0247	1.0061	1.0085	0.9909	0.9979	2.3%
2016-17	1.8580	1.0751	1.0434	1.0395	0.9857	1.0118	0.9890	1.0273	1.0021	1.0175	1.0000	0.9811	0.9840	2.9%
Long Term Average	1.5038	1.0661	1.0292	1.0222	1.0122	0.9978	1.0141	1.0004	1.0085	1.0146	0.9977	0.9919	0.9890	
Last 5-Yr Average	1.8548	1.0611	1.0434	1.0317	1.0218	1.0083	1.0066	1.0080	1.0084	1.0201	1.0021	0.9966	0.9883	
Last 3-Yr Average	1.9006	1.0508	1.0454	1.0339	1.0149	1.0002	1.0007	1.0091	1.0124	1.0158	1.0021	0.9928	0.9940	
3-Yr Weighted Avg	1.8699	1.0519	1.0435	1.0346	1.0071	1.0063	0.9967	1.0140	1.0110	1.0148	1.0024	0.9886	0.9913	
Last 2-Yr Average	1.8300	1.0419	1.0409	1.0332	1.0062	1.0126	0.9945	1.0147	1.0134	1.0118	1.0042	0.9860	0.9909	

Source: Calculated by MMI from State Department of Education, Public School Information System (2001-2012), Westport Public Schools (2012-13 to 2016-17) enrollments, and CT Department of Public Health (CT DPH) Birth Data. This study was approved by the DPH HIC. Certain data used in this study were obtained from DPH. MMI assumes full responsibility for analyses and interpretation of this data.

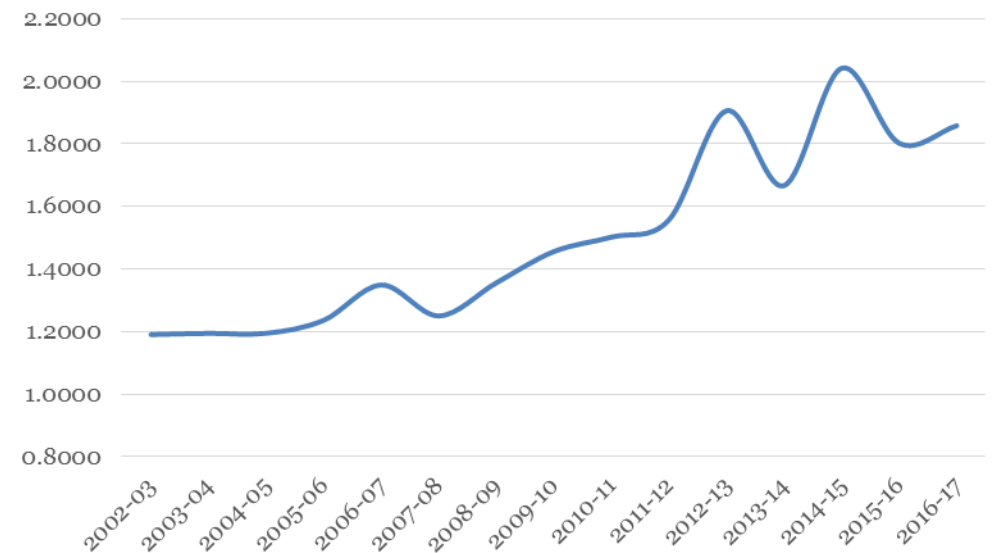


# Persistency Ratios

- The Birth-K persistency ratio is key in predicting the size of future entering cohorts
- As with many lower Fairfield County communities, Westport has seen a rising Birth-K ratio since the onset of the Great Recession
- Westport's Birth-K has exhibited greater year-to-year fluctuations over the last five years than in previous decade



Westport Birth-K Ratio

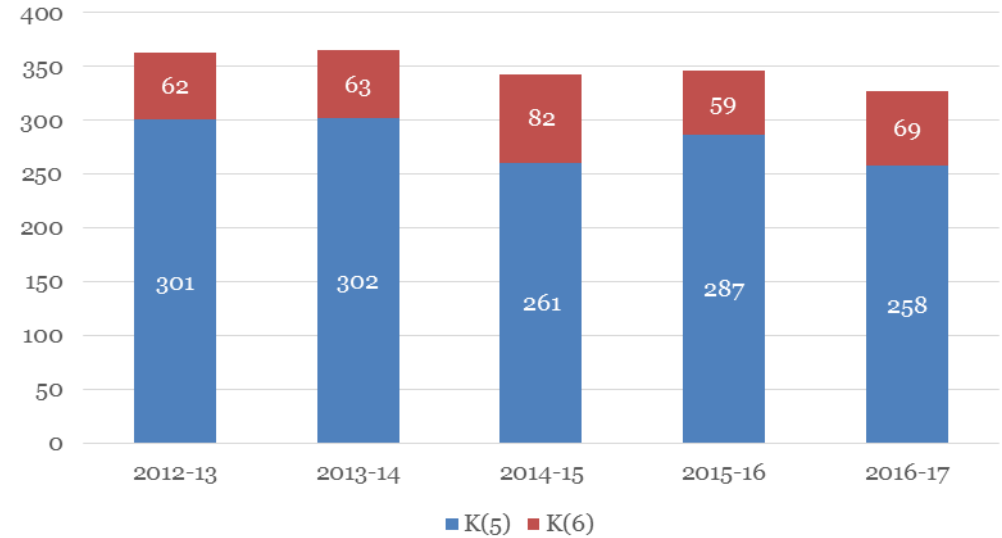




# Persistency Ratios

- As in many Fairfield County towns, a portion of kindergarten students enter the system at 6 years of age rather than 5
- Over the past five years, approx. 19% of entering kindergarteners are a year older than their peers

Age Composition of Kindergarten Cohorts



# Persistence Ratios

Kindergarten through 12th Grade Persistence Ratios by School Year  
2002-2003 to 2013-14

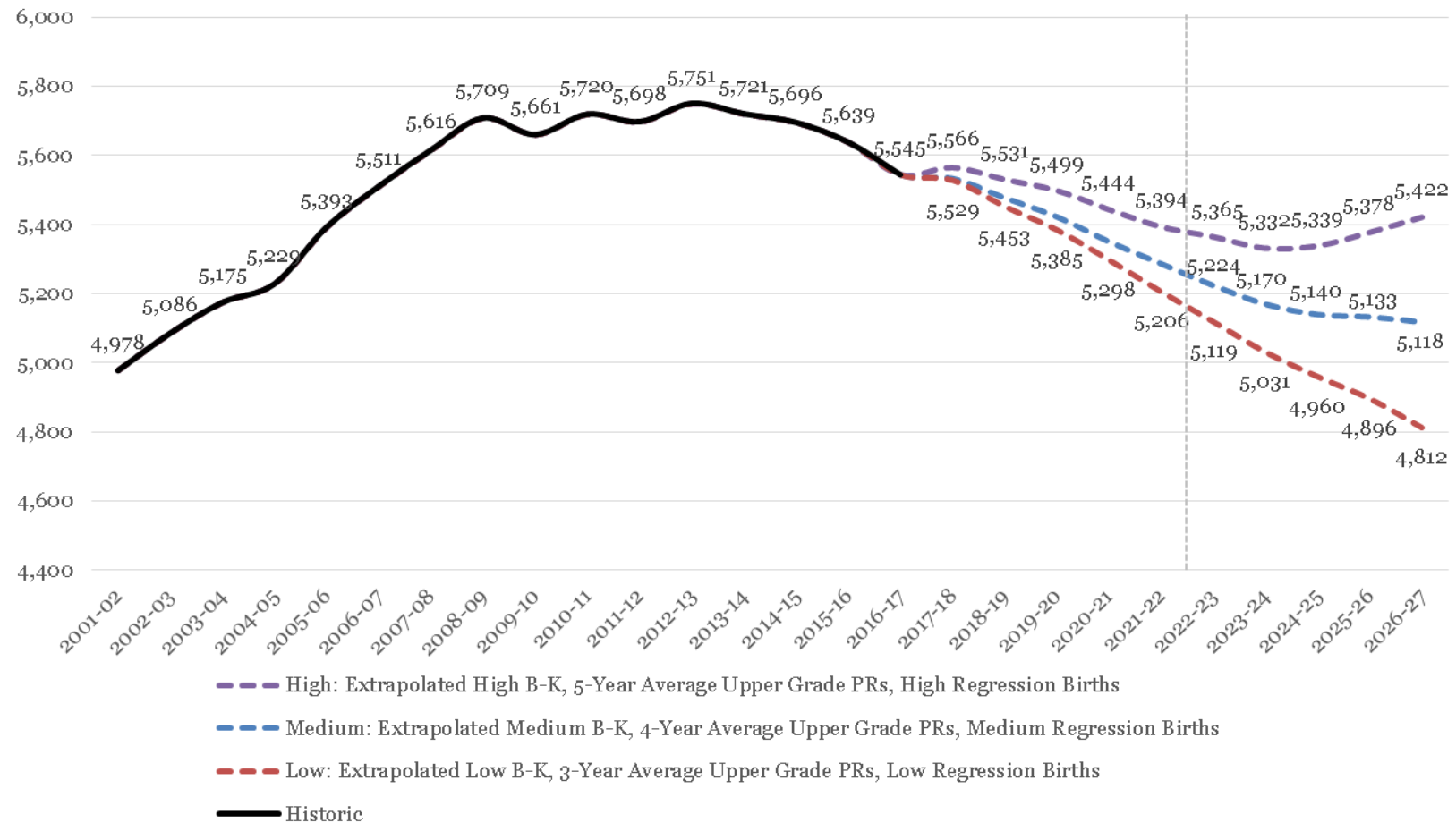
Year	Birth-K	K-1	1-2	2-3	3-4	4-5	5-6	6-7	7-8	8-9	9-10	10-11	11-12	Elem. Migration
2002-03	1.1902	1.0574	0.9888	0.9931	0.9936	0.9834	0.9723	1.0202	1.0076	1.0234	0.9774	0.9696	0.9817	0.3%
2003-04	1.1942	1.0619	0.9932	1.0090	0.9814	1.0000	1.0024	0.9810	0.9777	1.0176	0.9629	0.9942	0.9843	0.8%
2004-05	1.1943	1.0732	1.0437	0.9909	0.9978	0.9763	1.0022	0.9688	0.9927	0.9797	0.9901	0.9703	1.0000	1.4%
2005-06	1.2358	1.0667	1.0354	1.0186	1.0069	1.0157	1.0364	1.0323	1.0223	1.0244	1.0052	0.9800	0.9817	2.7%
2006-07	1.3488	1.0700	1.0375	1.0610	0.9909	1.0023	1.0199	0.9813	1.0208	0.9854	1.0143	0.9871	0.9694	3.1%
2007-08	1.2500	1.1029	1.0384	1.0217	1.0184	1.0092	1.0205	1.0065	1.0263	0.9939	1.0172	1.0164	1.0104	3.7%
2008-09	1.3555	1.1135	1.0287	1.0109	1.0212	0.9819	1.0251	0.9933	1.0151	1.0163	0.9938	0.9952	0.9908	2.8%
2009-10	1.4556	1.0539	0.9830	1.0279	0.9978	0.9723	1.0299	0.9889	1.0000	0.9894	0.9954	0.9793	0.9976	0.7%
2010-11	1.5019	1.0663	1.0256	1.0395	1.0452	0.9612	1.0356	0.9933	0.9977	1.0404	1.0021	0.9954	0.9895	2.5%
2011-12	1.5570	1.0204	1.0473	1.0023	1.0214	1.0238	1.0336	1.0000	1.0247	1.0474	0.9957	1.0086	0.9885	2.3%
2012-13	1.9058	1.0901	1.0525	1.0238	1.0204	1.0186	1.0127	1.0022	1.0069	1.0461	1.0086	1.0152	0.9894	3.9%
2013-14	1.6667	1.0632	1.0284	1.0333	1.0441	1.0222	1.0183	1.0104	0.9978	1.0068	0.9958	0.9893	0.9701	3.7%
2014-15	2.0417	1.0685	1.0543	1.0352	1.0322	0.9756	1.0130	0.9978	1.0103	1.0239	0.9977	1.0063	1.0000	3.1%
2015-16	1.8021	1.0087	1.0385	1.0270	1.0267	1.0134	1.0000	1.0021	1.0247	1.0061	1.0085	0.9909	0.9979	2.3%
2016-17	1.8580	1.0751	1.0434	1.0395	0.9857	1.0118	0.9890	1.0273	1.0021	1.0175	1.0000	0.9811	0.9840	2.9%
Long Term Average	1.5038	1.0661	1.0292	1.0222	1.0122	0.9978	1.0141	1.0004	1.0085	1.0146	0.9977	0.9919	0.9890	
Last 5-Yr Average	1.8548	1.0611	1.0434	1.0317	1.0218	1.0083	1.0066	1.0080	1.0084	1.0201	1.0021	0.9966	0.9883	
Last 3-Yr Average	1.9006	1.0508	1.0454	1.0339	1.0149	1.0002	1.0007	1.0091	1.0124	1.0158	1.0021	0.9928	0.9940	
3-Yr Weighted Avg	1.8699	1.0519	1.0435	1.0346	1.0071	1.0063	0.9967	1.0140	1.0110	1.0148	1.0024	0.9886	0.9913	
Last 2-Yr Average	1.8300	1.0419	1.0409	1.0332	1.0062	1.0126	0.9945	1.0147	1.0134	1.0118	1.0042	0.9860	0.9909	

Source: Calculated by MMI from State Department of Education, Public School Information System (2001-2012), Westport Public Schools (2012-13 to 2016-17) enrollments, and CT Department of Public Health (CT DPH) Birth Data. This study was approved by the DPH HIC. Certain data used in this study were obtained from DPH. MMI assumes full responsibility for analyses and interpretation of this data.



# Districtwide Projections

Preliminary Projected K-12 Enrollment: Scenario Comparison



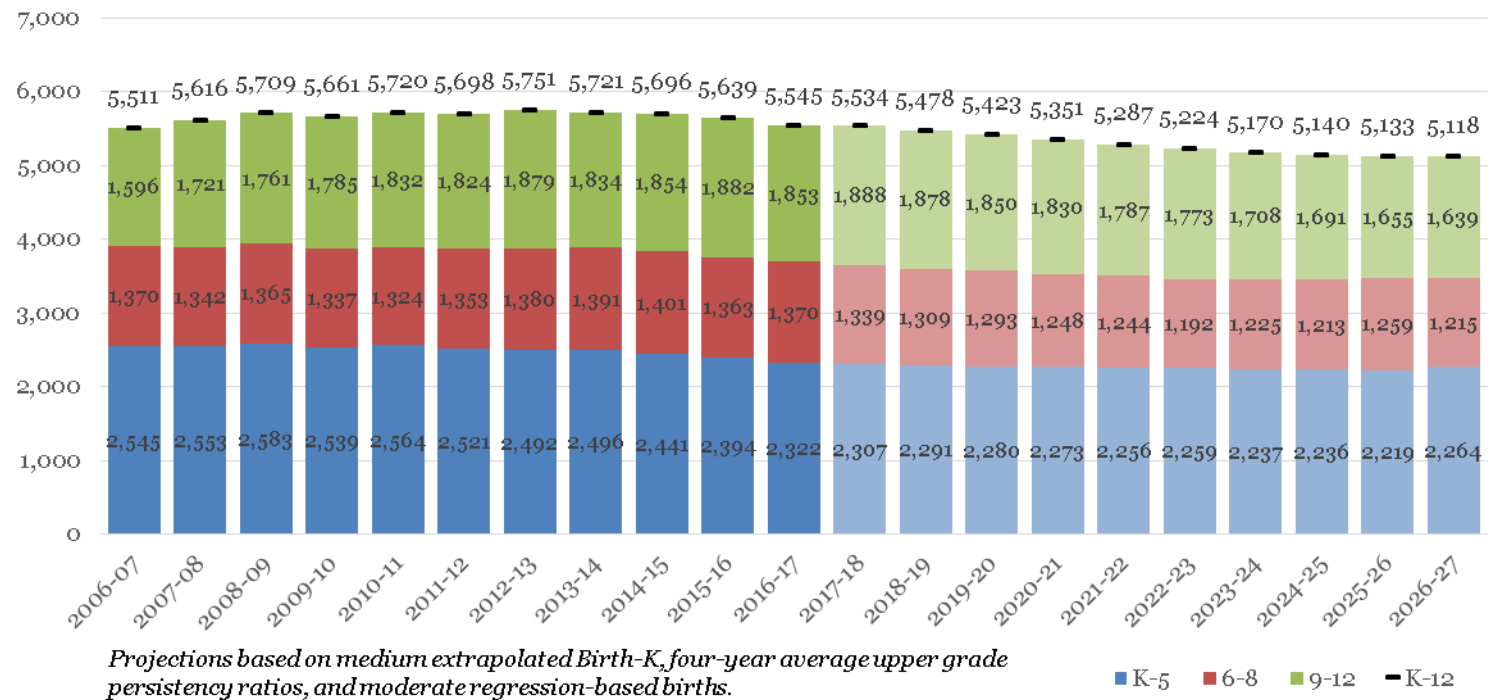
Source: CT CeDar, Westport Public Schools, MMI analysis



# Districtwide Projections

- Medium scenario depicts most probable scenario for future enrollments in Westport schools

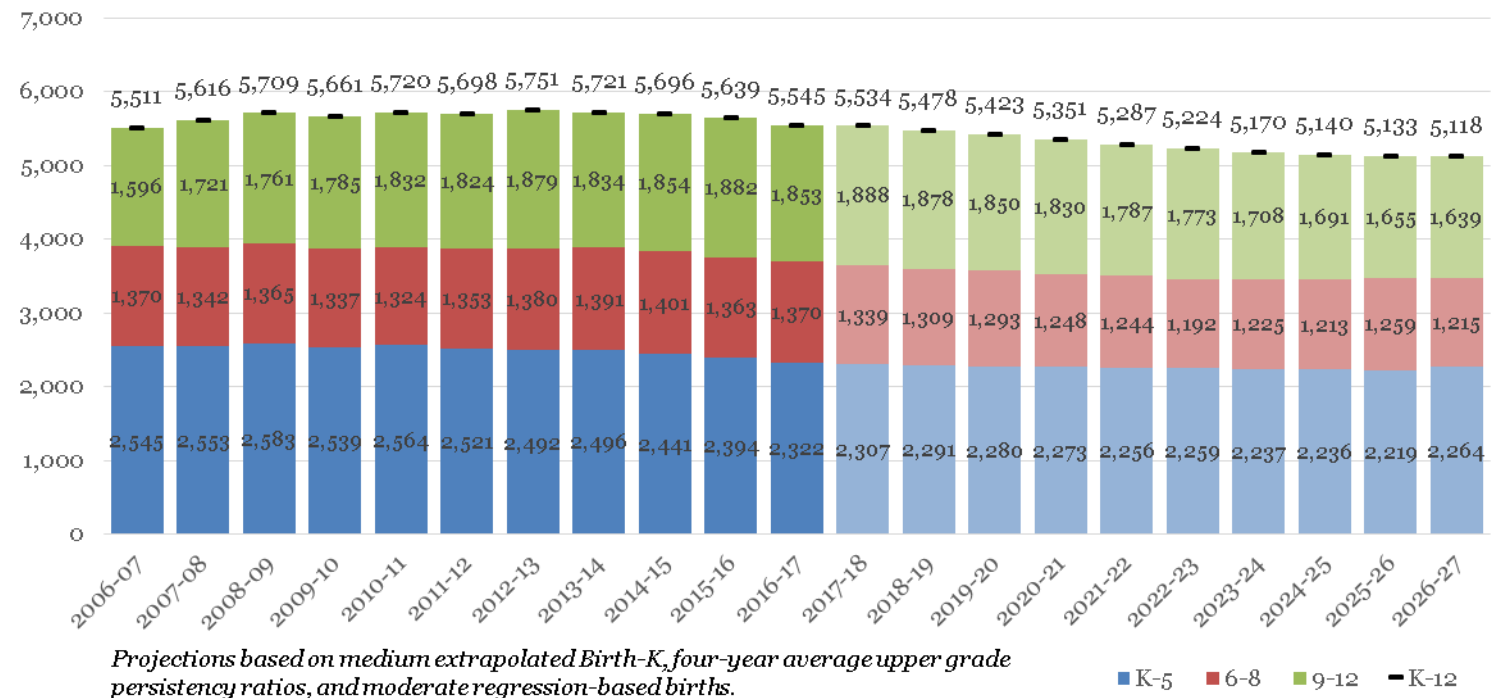
**Historic and Projected K-12 Enrollment (Medium Scenario)  
2006-07 to 2026-27**



# Districtwide Projections

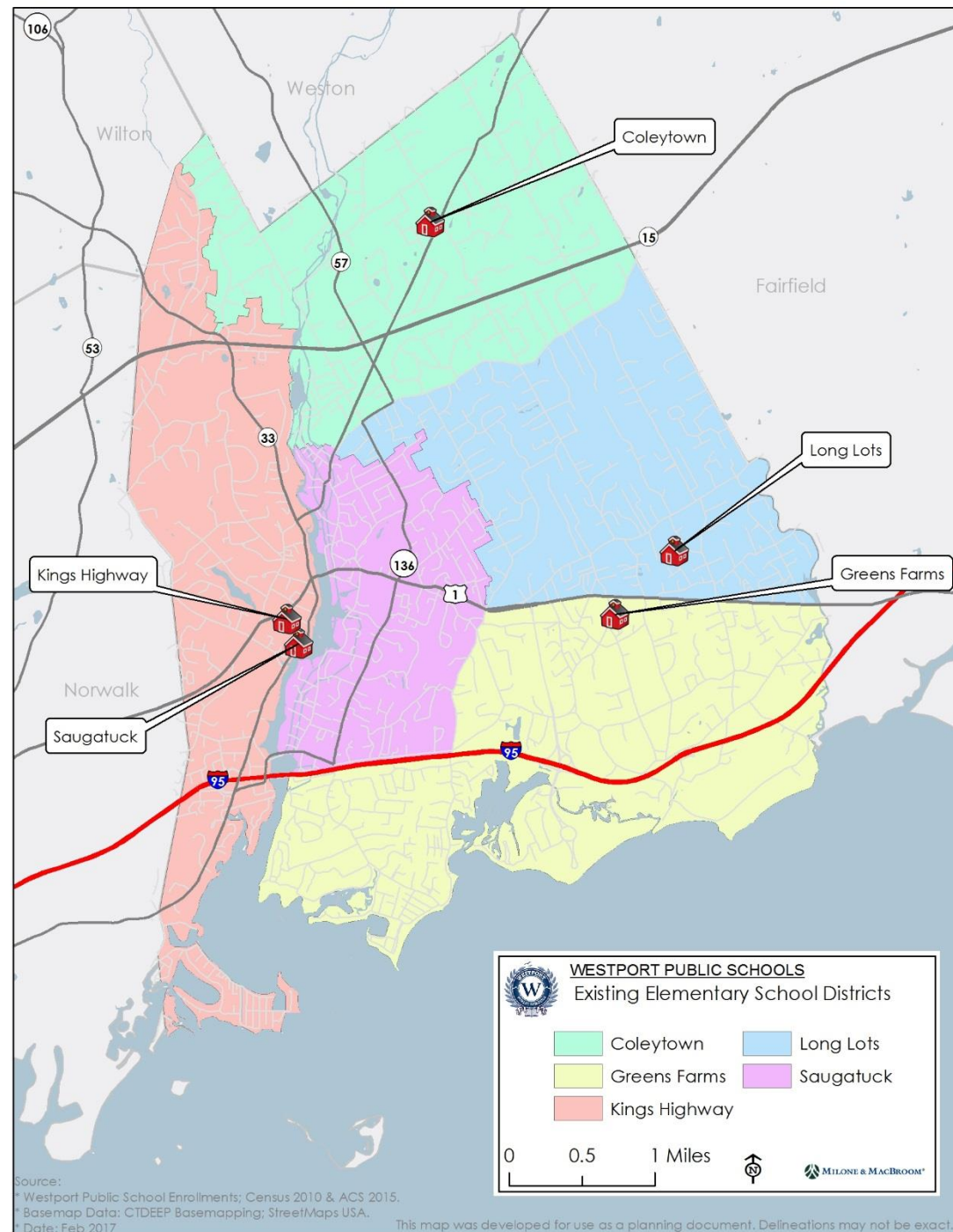
- Medium scenario depicts a decline in enrollment through the projection horizon
- K-12 student population down 4.6% by 2021-22 and 7.7% by 2026-27

**Historic and Projected K-12 Enrollment (Medium Scenario)  
2006-07 to 2026-27**





# Elementary Projections



# Persistency Ratios

- Elementary school persistency ratios
- In-migration has a larger proportional impact at Coleytown, Green's Farms, and Long Lots than King's Highway and Saugatuck
- Shrinking incoming kindergarten cohorts magnify the apparent effect of later arrivals

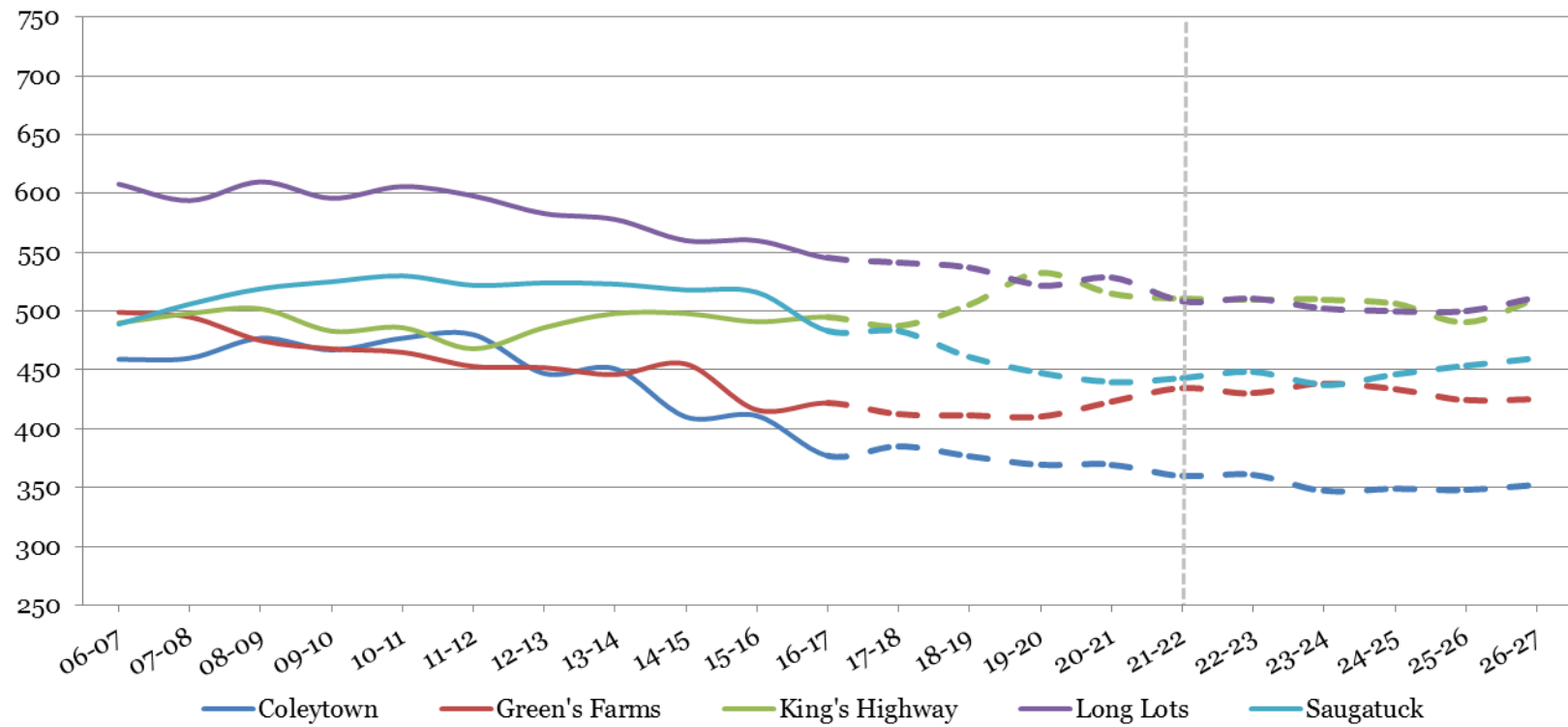
Elementary School Average Persistency Ratios

5-Year Average	Town Births-K	Birth-K	K-1	1-2	2-3	3-4	4-5
Coleytown	0.283	1.877	1.074	1.055	1.032	1.056	0.992
Green's Farms	0.298	1.885	1.114	1.045	1.028	1.068	1.007
King's Highway	0.384	1.786	1.042	1.065	1.052	0.999	0.993
Long Lots	0.406	2.183	1.072	1.038	1.040	1.024	1.033
Saugatuck	0.400	1.729	1.021	1.028	1.012	0.984	1.008



# Elementary School Projections

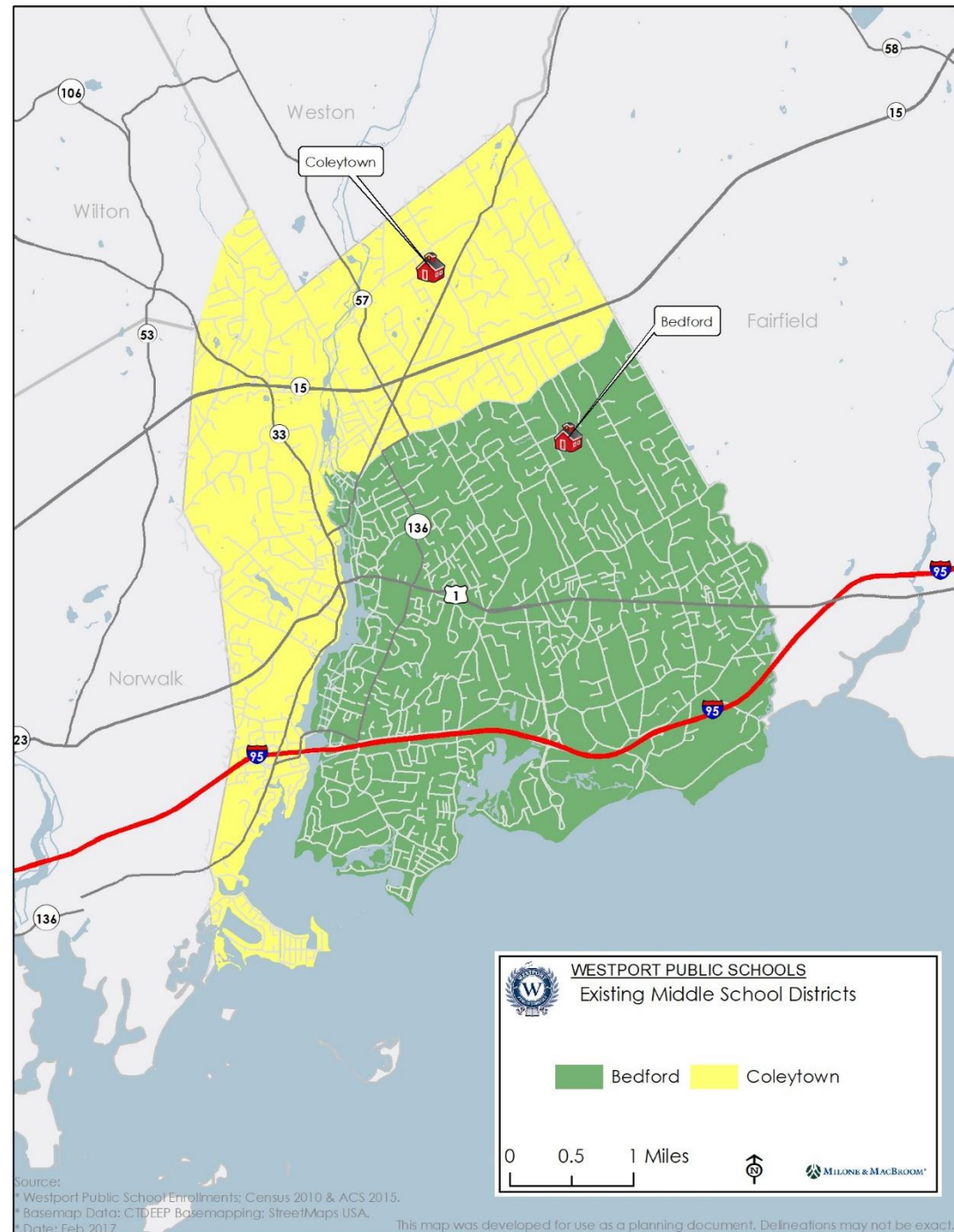
**Actual and Projected Elementary (K-5) Enrollments by School  
(Medium Scenario)**



*Projections based on 5-year average by-school persistencies, normalized to district-wide medium scenario projections.*



# Middle School Projections

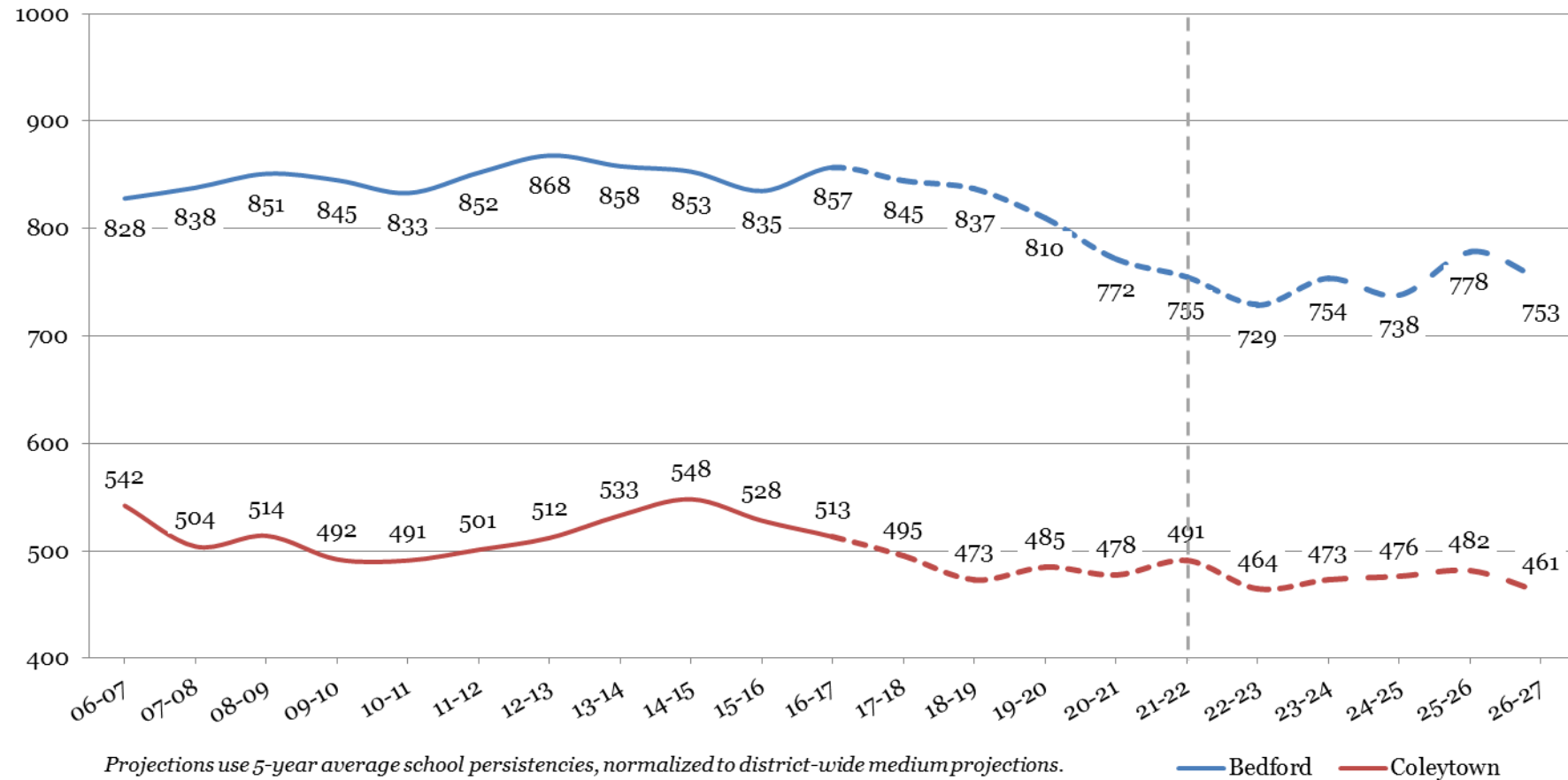


# Middle School Projections

**Middle School Average Persistency Ratios**

5-Yr	5-6	6-7	7-8
Bedford	1.00231	1.01128	1.01493
Coleytown	1.01435	1.00309	0.99802

**Actual and Projected Middle (6-8th) Enrollments (Medium Scenario)**





# Projection Takeaways Districtwide

- All projection scenarios see an overall decline through the majority of the projection horizon, with projected declines in K-12 enrollment over the next five years between -2.7% and -6.1%
- The medium projection scenario reflects our estimate of the most likely trajectory of future enrollments based on historic persistency ratios and likely economic and housing market conditions
- The medium and high enrollment scenarios depict a moderating or recovery trend in the last three years of the projections as projected future births begin to trend up; however, projections are most reliable for the immediate future and should be used with caution in the five-to-ten year horizon

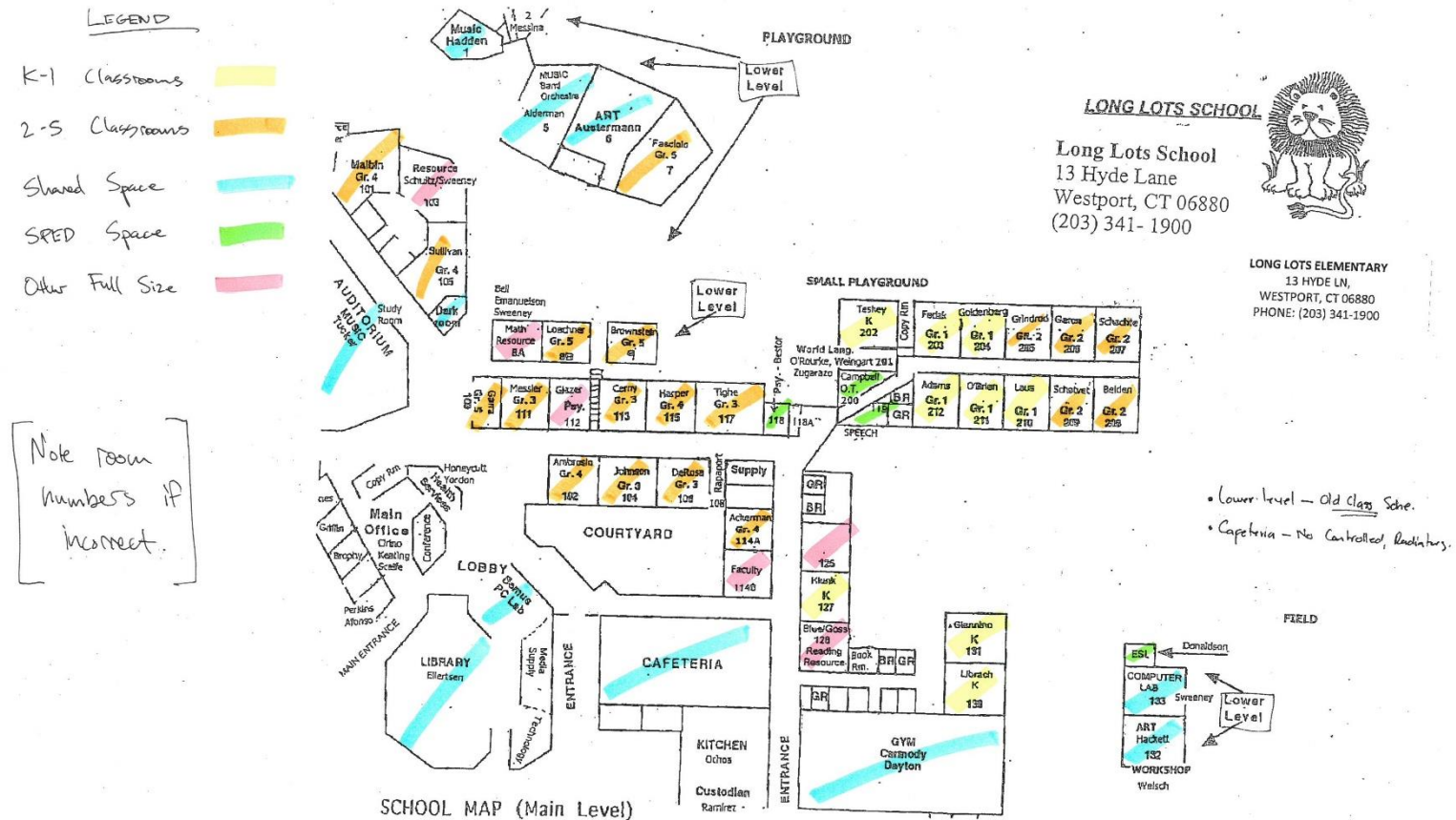


# Projection Takeaways School Specific

- Elementary projections scenario depicts rising enrollment at King's Highway and Green's Farms and declines at other three buildings in the near future
  - King's Highway enrollment expected to grow based on birth 'bubble' in past few years
  - Green's Farms seeing more gradual growth based on greater in-migration
- Middle school projections show declines at both schools, but steeper decrease in enrollment expected at Bedford based on known cohorts currently progressing through elementary schools which will begin matriculating to the middle grades in 2019-20



# Elementary Facilities Capacity & Utilization



- Catalog data and calculate capacity:
  - Analyze current space capacity based on reported classroom use

**LONG LOTS SCHOOL**  
2016-2017

Note: Rooms are not to scale

**PLAYGROUND**

**Lower Level**

**Upper Level**

**SMALL PLAYGROUND**

**Lower Level**

**Upper Level**

**Music Hadden 1**

**Garra Gr. 5**

**ART Auermann Trinsley Gr. 6**

**Trife Gr. 5**

**ESOL-Bachman**

**ESOL-Gr. 4**

**ESOL-Gr. 5**

**ESOL-Gr. 6**

**ESOL-Gr. 7**

**ESOL-Gr. 8**

**ESOL-Gr. 9**

**ESOL-Gr. 10**

**ESOL-Gr. 11**

**ESOL-Gr. 12**

**ESOL-Gr. 13**

**ESOL-Gr. 14**

**ESOL-Gr. 15**

**ESOL-Gr. 16**

**ESOL-Gr. 17**

**ESOL-Gr. 18**

**ESOL-Gr. 19**

**ESOL-Gr. 20**

**ESOL-Gr. 21**

**ESOL-Gr. 22**

**ESOL-Gr. 23**

**ESOL-Gr. 24**

**ESOL-Gr. 25**

**ESOL-Gr. 26**

**ESOL-Gr. 27**

**ESOL-Gr. 28**

**ESOL-Gr. 29**

**ESOL-Gr. 30**

**ESOL-Gr. 31**

**ESOL-Gr. 32**

**ESOL-Gr. 33**

**ESOL-Gr. 34**

**ESOL-Gr. 35**

**ESOL-Gr. 36**

**ESOL-Gr. 37**

**ESOL-Gr. 38**

**ESOL-Gr. 39**

**ESOL-Gr. 40**

**ESOL-Gr. 41**

**ESOL-Gr. 42**

**ESOL-Gr. 43**

**ESOL-Gr. 44**

**ESOL-Gr. 45**

**ESOL-Gr. 46**

**ESOL-Gr. 47**

**ESOL-Gr. 48**

**ESOL-Gr. 49**

**ESOL-Gr. 50**

**ESOL-Gr. 51**

**ESOL-Gr. 52**

**ESOL-Gr. 53**

**ESOL-Gr. 54**

**ESOL-Gr. 55**

**ESOL-Gr. 56**

**ESOL-Gr. 57**

**ESOL-Gr. 58**

**ESOL-Gr. 59**

**ESOL-Gr. 60**

**ESOL-Gr. 61**

**ESOL-Gr. 62**

**ESOL-Gr. 63**

**ESOL-Gr. 64**

**ESOL-Gr. 65**

**ESOL-Gr. 66**

**ESOL-Gr. 67**

**ESOL-Gr. 68**

**ESOL-Gr. 69**

**ESOL-Gr. 70**

**ESOL-Gr. 71**

**ESOL-Gr. 72**

**ESOL-Gr. 73**

**ESOL-Gr. 74**

**ESOL-Gr. 75**

**ESOL-Gr. 76**

**ESOL-Gr. 77**

**ESOL-Gr. 78**

**ESOL-Gr. 79**

**ESOL-Gr. 80**

**ESOL-Gr. 81**

**ESOL-Gr. 82**

**ESOL-Gr. 83**

**ESOL-Gr. 84**

**ESOL-Gr. 85**

**ESOL-Gr. 86**

**ESOL-Gr. 87**

**ESOL-Gr. 88**

**ESOL-Gr. 89**

**ESOL-Gr. 90**

**ESOL-Gr. 91**

**ESOL-Gr. 92**

**ESOL-Gr. 93**

**ESOL-Gr. 94**

**ESOL-Gr. 95**

**ESOL-Gr. 96**

**ESOL-Gr. 97**

**ESOL-Gr. 98**

**ESOL-Gr. 99**

**ESOL-Gr. 100**

**ESOL-Gr. 101**

**ESOL-Gr. 102**

**ESOL-Gr. 103**

**ESOL-Gr. 104**

**ESOL-Gr. 105**

**ESOL-Gr. 106**

**ESOL-Gr. 107**

**ESOL-Gr. 108**

**ESOL-Gr. 109**

**ESOL-Gr. 110**

**ESOL-Gr. 111**

**ESOL-Gr. 112**

**ESOL-Gr. 113**

**ESOL-Gr. 114**

**ESOL-Gr. 115**

**ESOL-Gr. 116**

**ESOL-Gr. 117**

**ESOL-Gr. 118**

**ESOL-Gr. 119**

**ESOL-Gr. 120**

**ESOL-Gr. 121**

**ESOL-Gr. 122**

**ESOL-Gr. 123**

**ESOL-Gr. 124**

**ESOL-Gr. 125**

**ESOL-Gr. 126**

**ESOL-Gr. 127**

**ESOL-Gr. 128**

**ESOL-Gr. 129**

**ESOL-Gr. 130**

**ESOL-Gr. 131**

**ESOL-Gr. 132**

**ESOL-Gr. 133**

**ESOL-Gr. 134**

**ESOL-Gr. 135**

**ESOL-Gr. 136**

**ESOL-Gr. 137**

**ESOL-Gr. 138**

**ESOL-Gr. 139**

**ESOL-Gr. 140**

**ESOL-Gr. 141**

**ESOL-Gr. 142**

**ESOL-Gr. 143**

**ESOL-Gr. 144**

**ESOL-Gr. 145**

**ESOL-Gr. 146**

**ESOL-Gr. 147**

**ESOL-Gr. 148**

**ESOL-Gr. 149**

**ESOL-Gr. 150**

**ESOL-Gr. 151**

**ESOL-Gr. 152**

**ESOL-Gr. 153**

**ESOL-Gr. 154**

**ESOL-Gr. 155**

**ESOL-Gr. 156**

**ESOL-Gr. 157**

**ESOL-Gr. 158**

**ESOL-Gr. 159**

**ESOL-Gr. 160**

**ESOL-Gr. 161**

**ESOL-Gr. 162**

**ESOL-Gr. 163**

**ESOL-Gr. 164**

**ESOL-Gr. 165**

**ESOL-Gr. 166**

**ESOL-Gr. 167**

**ESOL-Gr. 168**

**ESOL-Gr. 169**

**ESOL-Gr. 170**

**ESOL-Gr. 171**

**ESOL-Gr. 172**

**ESOL-Gr. 173**

**ESOL-Gr. 174**

**ESOL-Gr. 175**

**ESOL-Gr. 176**

**ESOL-Gr. 177**

**ESOL-Gr. 178**

**ESOL-Gr. 179**

**ESOL-Gr. 180**

**ESOL-Gr. 181**

**ESOL-Gr. 182**

**ESOL-Gr. 183**

**ESOL-Gr. 184**

**ESOL-Gr. 185**

**ESOL-Gr. 186**

**ESOL-Gr. 187**

**ESOL-Gr. 188**

**ESOL-Gr. 189**

**ESOL-Gr. 190**

**ESOL-Gr. 191**

**ESOL-Gr. 192**

**ESOL-Gr. 193**

**ESOL-Gr. 194**

**ESOL-Gr. 195**

**ESOL-Gr. 196**

**ESOL-Gr. 197**

**ESOL-Gr. 198**

**ESOL-Gr. 199**

**ESOL-Gr. 200**

**ESOL-Gr. 201**

**ESOL-Gr. 202**

**ESOL-Gr. 203**

**ESOL-Gr. 204**

**ESOL-Gr. 205**

**ESOL-Gr. 206**

**ESOL-Gr. 207**

**ESOL-Gr. 208**

**ESOL-Gr. 209**

**ESOL-Gr.**



# Capacity: Process Overview

- Data collection from WPS Elementary Building Leadership in the form of floor plans and corresponding room utilization information
- Categorized Rooms into Academic, Core, Shared, Special Ed. and Related Services Spaces
- Academic Spaces drive capacity of each building



# Capacity: Assumptions & Clarifications

- Represent a functional capacity for each school reflecting the current program in each building
- School utilization based on an operating efficiency of 90% - leaves headroom for enrollment bubbles
- Spaces excluded from capacity calculations:
  - Cores & Shared spaces (e.g. Gym, Cafeteria, Library, Art, Music, Computer Labs), SPED, OT/PT, speech, psych, etc...
- Class Size Policy Guidelines (students per class)
  - K-2<sup>nd</sup> 22
  - 3<sup>rd</sup> -5<sup>th</sup> 25





# Elementary School -Capacity

## Elementary School Capacity (Grades K-5)

School	2016-17 Enrollment	Study Capacity	
		Capacity	Utilization
Coleytown*	377	403	93.5%
Green's Farms	422	448	94.2%
King's Highway	495	508	97.4%
Long Lots	545	595	91.6%
Saugatuck	483	508	95.1%
<b>Total K-5</b>	<b>2,322</b>	<b>2,462</b>	<b>94.3%</b>

(\*) Numbers shown exclude complex of small PreK classrooms at Coleytown



# Elementary School -Utilization

## Elementary Projections

School	2016 - 17	2017 - 18	2018 - 19	2019 - 20	2020 - 21	2021 - 22	2022 - 23	2023 - 24	2024 - 25	2025 - 26	2026 - 27
Coleytown*	377	385	376	370	370	362	362	348	350	350	354
Green's Farms	422	415	412	410	423	435	431	438	434	423	425
King's Highway	495	486	504	531	513	508	508	510	507	492	510
Long Lots	545	542	536	524	529	508	511	503	501	501	512
Saugatuck	483	484	461	447	440	444	449	439	447	454	462
<b>Total</b>	<b>2,322</b>	<b>2,312</b>	<b>2,289</b>	<b>2,282</b>	<b>2,275</b>	<b>2,257</b>	<b>2,261</b>	<b>2,238</b>	<b>2,239</b>	<b>2,220</b>	<b>2,263</b>
<b>K-5 Capacity</b>	<b>2,462</b>	<b>2,462</b>	<b>2,462</b>	<b>2,462</b>	<b>2,462</b>	<b>2,462</b>	<b>2,462</b>	<b>2,462</b>	<b>2,462</b>	<b>2,462</b>	<b>2,462</b>
<b>Seat Surplus/Deficit</b>	<b>+140</b>	<b>+150</b>	<b>+173</b>	<b>+180</b>	<b>+187</b>	<b>+205</b>	<b>+201</b>	<b>+224</b>	<b>+223</b>	<b>+242</b>	<b>+199</b>

(\*) Numbers shown exclude complex of small PreK classrooms at Coleytown

## Elementary Utilization

School	2016 - 17	2017 - 18	2018 - 19	2019 - 20	2020 - 21	2021 - 22	2022 - 23	2023 - 24	2024 - 25	2025 - 26	2026 - 27
Coleytown*	93.5%	95.5%	93.3%	91.8%	91.8%	89.8%	89.8%	86.4%	86.8%	86.8%	87.8%
Green's Farms	94.2%	92.6%	92.0%	91.5%	94.4%	97.1%	96.2%	97.8%	96.9%	94.4%	94.9%
King's Highway	97.4%	95.7%	99.2%	104.5%	101.0%	100.0%	100.0%	100.4%	99.8%	96.9%	100.4%
Long Lots	91.6%	91.1%	90.1%	88.1%	88.9%	85.4%	85.9%	84.5%	84.2%	84.2%	86.1%
Saugatuck	95.1%	95.3%	90.7%	88.0%	86.6%	87.4%	88.4%	86.4%	88.0%	89.4%	90.9%
<b>Total</b>	<b>94.3%</b>	<b>93.9%</b>	<b>93.0%</b>	<b>92.7%</b>	<b>92.4%</b>	<b>91.7%</b>	<b>91.8%</b>	<b>90.9%</b>	<b>90.9%</b>	<b>90.2%</b>	<b>91.9%</b>

(\*) Numbers shown exclude complex of small PreK classrooms at Coleytown

*Note: Projected enrollments typically have greatest accuracy in the first 5 years (highlighted in grey)*



# Elementary School –Potential Flex Rooms

Elementary School Capacity (K-5th) with Flex Rooms					
School	2016-17 Enrollment	Flex Classrooms	Functional Capacity Including Flex Rooms		
			Add. Flex Capacity	Capacity w/ Flex	Utilization w/ Flex Space
Coleytown*	377	4	90	493	76.5%
Green's Farms	422	2	45	493	85.6%
King's Highway	495	1	23	531	93.3%
Long Lots	545	2	45	640	85.2%
Saugatuck	483	2	45	553	87.3%
<b>Total K-5</b>	<b>2,322</b>	<b>11</b>	<b>248</b>	<b>2,710</b>	<b>85.7%</b>

- Administrators and building leadership identified rooms at each school that could be used as K-5<sup>th</sup> instructional classrooms if enrollment pressures warranted
  - Potential exists for 11 additional classrooms or 248 seats across elementary schools



# Elementary School –Utilization w/ Flex

## Elementary Projections

School	2016 - 17	2017 - 18	2018 - 19	2019 - 20	2020 - 21	2021 - 22	2022 - 23	2023 - 24	2024 - 25	2025 - 26	2026 - 27
Coleytown*	377	385	376	370	370	362	362	348	350	350	354
Green's Farms	422	415	412	410	423	435	431	438	434	423	425
King's Highway	495	486	504	531	513	508	508	510	507	492	510
Long Lots	545	542	536	524	529	508	511	503	501	501	512
Saugatuck	483	484	461	447	440	444	449	439	447	454	462
<b>Total</b>	<b>2,322</b>	<b>2,312</b>	<b>2,289</b>	<b>2,282</b>	<b>2,275</b>	<b>2,257</b>	<b>2,261</b>	<b>2,238</b>	<b>2,239</b>	<b>2,220</b>	<b>2,263</b>
<b>K-5 Capacity</b>	<b>2,462</b>	<b>2,462</b>	<b>2,462</b>	<b>2,462</b>	<b>2,462</b>	<b>2,462</b>	<b>2,462</b>	<b>2,462</b>	<b>2,462</b>	<b>2,462</b>	<b>2,462</b>
<b>Seat Surplus/Deficit</b>	<b>+140</b>	<b>+150</b>	<b>+173</b>	<b>+180</b>	<b>+187</b>	<b>+205</b>	<b>+201</b>	<b>+224</b>	<b>+223</b>	<b>+242</b>	<b>+199</b>

(\*) Numbers shown exclude complex of small PreK classrooms at Coleytown

## Elementary Utilization

School	2016 - 17	2017 - 18	2018 - 19	2019 - 20	2020 - 21	2021 - 22	2022 - 23	2023 - 24	2024 - 25	2025 - 26	2026 - 27
Coleytown*	76.5%	78.1%	76.3%	75.1%	75.1%	73.4%	73.4%	70.6%	71.0%	71.0%	71.8%
Green's Farms	85.6%	84.2%	83.6%	83.2%	85.8%	88.2%	87.4%	88.8%	88.0%	85.8%	86.2%
King's Highway	93.2%	91.5%	94.9%	100.0%	96.6%	95.7%	95.7%	96.0%	95.5%	92.7%	96.0%
Long Lots	85.2%	84.7%	83.8%	81.9%	82.7%	79.4%	79.8%	78.6%	78.3%	78.3%	80.0%
Saugatuck	87.3%	87.5%	83.4%	80.8%	79.6%	80.3%	81.2%	79.4%	80.8%	82.1%	83.5%
<b>Total</b>	<b>85.7%</b>	<b>85.3%</b>	<b>84.5%</b>	<b>84.2%</b>	<b>83.9%</b>	<b>83.3%</b>	<b>83.4%</b>	<b>82.6%</b>	<b>82.6%</b>	<b>81.9%</b>	<b>83.5%</b>

(\*) Numbers shown exclude complex of small PreK classrooms at Coleytown

- The additional K-5<sup>th</sup> instructional space gained provides some relief to King's Highway, however, utilization is still projected to reach 100% in 2019-20.

Note: Projected enrollments typically have greatest accuracy in the first 5 years (highlighted in grey)



# Elem. Utilization: Takeaways

- Elementary School Enrollment projected to be stable for next decade (2,220 to 2,312)
- Current Elementary System Utilization is 94.3%
  - Ranges from 91.6 % at Long Lots to 97.4% at King's Highway.
  - Overall, all elementary schools are utilized very efficiently
- Enrollment Pressure at King's Highway projected to persist for the next 5 years and beyond
  - Projected to exceed functional capacity in 2019-20 at 104.5%
- WPS should explore strategies to provide capacity relief at King's Highway.
  - Leveraging the Flex rooms provides some near term relief, however, utilization is still projected to reach maximum capacity in 2019-20
- Coleytown, Long Lots and Saugatuck projected to have a utilization from the high 80s to mid 90s for the next 5 years
- Green's Farm bears watching, utilization projected to reach 97% in 2021-22 and persist throughout projection horizon



# APPENDIX: Districtwide Projections

High Districtwide Projections																	Total	Total	Total	Total	Total
School Year	Birth Year	Births	K	1	2	3	4	5	6	7	8	9	10	11	12	PK	PK-12	K-12	K-5	6-8	9-12
2016-17	2011	179	327	372	361	421	413	428	450	451	469	464	492	467	430	54	5,599	5,545	2,322	1,370	1,853
2017-18	2012	191	378	347	388	372	430	416	431	454	455	478	465	490	462	54	5,620	5,566	2,331	1,340	1,895
2018-19	2013	173	353	401	362	400	380	434	419	434	458	464	479	463	484	54	5,585	5,531	2,330	1,311	1,890
2019-20	2014	179	376	375	418	374	409	383	437	422	438	467	465	477	458	54	5,553	5,499	2,335	1,297	1,867
2020-21	2015	156	328	399	391	431	382	412	386	440	426	447	468	463	471	54	5,498	5,444	2,343	1,252	1,849
2021-22	2016	170	347	348	416	403	440	385	415	389	444	435	448	466	458	54	5,448	5,394	2,339	1,248	1,807
2022-23	2017	179	355	368	363	429	412	444	388	418	392	453	436	446	461	54	5,419	5,365	2,371	1,198	1,796
2023-24	2018	189	353	377	384	375	438	415	447	391	422	400	454	435	441	54	5,386	5,332	2,342	1,260	1,730
2024-25	2019	200	374	375	393	396	383	442	418	451	394	430	401	452	430	54	5,393	5,339	2,363	1,263	1,713
2025-26	2020	210	393	397	391	405	405	386	445	421	455	402	431	400	447	54	5,432	5,378	2,377	1,321	1,680
2026-27	2021	220	411	417	414	403	414	408	389	449	425	464	403	430	395	54	5,476	5,422	2,467	1,263	1,692

	PK-12	K-12	K-5	6-8	9-12
5 Yr Change	-2.7%	-2.7%	0.7%	-8.9%	-2.5%
10 Yr Change	-2.2%	-2.2%	6.2%	-7.8%	-8.7%



# APPENDIX: Districtwide Projections

Medium Districtwide Projections																	Total	Total	Total	Total	Total
School Year	Birth Year	Births	K	1	2	3	4	5	6	7	8	9	10	11	12	PK	PK-12	K-12	K-5	6-8	9-12
2016-17	2011	179	327	372	361	421	413	428	450	451	469	464	492	467	430	54	5,599	5,545	2,322	1,370	1,853
2017-18	2012	191	357	345	387	373	430	415	430	454	455	475	464	488	461	54	5,588	5,534	2,307	1,339	1,888
2018-19	2013	173	343	376	359	400	381	432	417	434	458	461	475	460	482	54	5,532	5,478	2,291	1,309	1,878
2019-20	2014	179	365	361	391	371	409	383	434	421	438	464	461	471	454	54	5,477	5,423	2,280	1,293	1,850
2020-21	2015	156	318	385	376	404	379	411	385	438	425	444	464	457	465	54	5,405	5,351	2,273	1,248	1,830
2021-22	2016	170	337	335	401	389	413	381	413	389	442	431	444	460	452	54	5,341	5,287	2,256	1,244	1,787
2022-23	2017	175	327	355	349	415	398	415	383	417	392	448	431	440	454	54	5,278	5,224	2,259	1,192	1,773
2023-24	2018	180	337	345	370	361	424	400	417	387	421	397	448	428	435	54	5,224	5,170	2,237	1,225	1,708
2024-25	2019	184	344	355	359	383	369	426	402	421	390	427	397	444	423	54	5,194	5,140	2,236	1,213	1,691
2025-26	2020	188	352	363	370	371	392	371	428	406	425	395	427	394	439	54	5,187	5,133	2,219	1,259	1,655
2026-27	2021	192	359	371	378	383	379	394	373	432	410	431	395	424	389	54	5,172	5,118	2,264	1,215	1,639

	PK-12	K-12	K-5	6-8	9-12
5 Yr Change	-4.6%	-4.7%	-2.8%	-9.2%	-3.6%
10 Yr Change	-7.6%	-7.7%	-2.5%	-11.3%	-11.5%

# APPENDIX: Districtwide Projections

Low Districtwide Projections																	Total	Total	Total	Total	Total
School Year	Birth Year	Births	K	1	2	3	4	5	6	7	8	9	10	11	12	PK	PK-12	K-12	K-5	6-8	9-12
2016-17	2011	179	327	372	361	421	413	428	450	451	469	464	492	467	430	54	5,599	5,545	2,322	1,370	1,853
2017-18	2012	191	351	344	389	373	427	413	428	454	457	476	465	488	464	54	5,583	5,529	2,297	1,339	1,893
2018-19	2013	173	323	369	360	402	379	427	413	432	460	464	477	462	485	54	5,507	5,453	2,260	1,305	1,888
2019-20	2014	179	355	339	386	372	408	379	427	417	437	467	465	474	459	54	5,439	5,385	2,239	1,281	1,865
2020-21	2015	156	309	373	354	399	378	408	379	431	422	444	468	462	471	54	5,352	5,298	2,221	1,232	1,845
2021-22	2016	170	318	325	390	366	405	378	408	382	436	429	445	465	459	54	5,260	5,206	2,182	1,226	1,798
2022-23	2017	167	312	334	340	403	371	405	378	412	387	443	430	442	462	54	5,173	5,119	2,165	1,177	1,777
2023-24	2018	169	316	328	349	352	409	371	405	381	417	393	444	427	439	54	5,085	5,031	2,125	1,203	1,703
2024-25	2019	165	309	332	343	361	357	409	371	409	386	424	394	441	424	54	5,014	4,960	2,111	1,166	1,683
2025-26	2020	162	303	325	347	355	366	357	409	374	414	392	425	391	438	54	4,950	4,896	2,053	1,197	1,646
2026-27	2021	158	295	318	340	359	360	366	357	413	379	421	393	422	389	54	4,866	4,812	2,038	1,149	1,625

	PK-12	K-12	K-5	6-8	9-12
5 Yr Change	-6.1%	-6.1%	-6.0%	-10.5%	-3.0%
10 Yr Change	-13.1%	-13.2%	-12.2%	-16.1%	-12.3%

# APPENDIX: Individual Elementary Projections

## Medium Projection Scenario

Westport Public Schools Elementary School Enrollment Projections 2017-18							
School	K	1	2	3	4	5	K-5th
Coleytown	62	53	67	59	74	70	385
Green's Farms	54	70	60	63	87	81	415
King's Highway	74	79	87	94	78	74	486
Long Lots	83	77	101	75	106	100	542
Saugatuck	84	68	71	83	87	91	484
<b>TOTAL</b>	<b>357</b>	<b>347</b>	<b>386</b>	<b>374</b>	<b>432</b>	<b>416</b>	<b>2,312</b>

Westport Public Schools Elementary School Enrollment Projections 2019-20							
School	K	1	2	3	4	5	K-5th
Coleytown	53	55	70	57	73	62	370
Green's Farms	70	72	62	74	65	67	410
King's Highway	93	84	82	87	92	93	531
Long Lots	79	84	91	82	108	80	524
Saugatuck	70	66	87	70	71	83	447
<b>TOTAL</b>	<b>365</b>	<b>361</b>	<b>392</b>	<b>370</b>	<b>409</b>	<b>385</b>	<b>2,282</b>

Westport Public Schools Elementary School Enrollment Projections 2018-19							
School	K	1	2	3	4	5	K-5th
Coleytown	51	67	55	69	62	72	376
Green's Farms	65	60	72	61	67	87	412
King's Highway	82	77	83	92	94	76	504
Long Lots	79	88	79	105	77	108	536
Saugatuck	66	85	69	72	82	87	461
<b>TOTAL</b>	<b>343</b>	<b>377</b>	<b>358</b>	<b>399</b>	<b>382</b>	<b>430</b>	<b>2,289</b>

Westport Public Schools Elementary School Enrollment Projections 2020-21							
School	K	1	2	3	4	5	K-5th
Coleytown	51	57	58	72	60	72	370
Green's Farms	62	77	75	65	79	65	423
King's Highway	64	96	89	86	87	91	513
Long Lots	69	84	87	94	84	111	529
Saugatuck	71	72	68	88	69	72	440
<b>TOTAL</b>	<b>317</b>	<b>386</b>	<b>377</b>	<b>405</b>	<b>379</b>	<b>411</b>	<b>2,275</b>

# APPENDIX: Individual Elementary Projections

## Medium Projection Scenario

Westport Public Schools Elementary School Enrollment Projections 2021-22							
School	K	1	2	3	4	5	K-5th
Coleytown	52	54	60	60	76	60	362
Green's Farms	60	69	80	77	69	80	435
King's Highway	76	66	102	93	86	85	508
Long Lots	76	74	86	90	96	86	508
Saugatuck	73	72	73	69	87	70	444
<b>TOTAL</b>	<b>337</b>	<b>335</b>	<b>401</b>	<b>389</b>	<b>414</b>	<b>381</b>	<b>2,257</b>

Westport Public Schools Elementary School Enrollment Projections 2023-24							
School	K	1	2	3	4	5	K-5th
Coleytown	51	53	58	59	65	62	348
Green's Farms	60	65	70	74	87	82	438
King's Highway	77	77	83	74	107	92	510
Long Lots	76	78	83	79	92	95	503
Saugatuck	74	72	76	75	73	69	439
<b>TOTAL</b>	<b>338</b>	<b>345</b>	<b>370</b>	<b>361</b>	<b>424</b>	<b>400</b>	<b>2,238</b>

Westport Public Schools Elementary School Enrollment Projections 2022-23							
School	K	1	2	3	4	5	K-5th
Coleytown	50	55	57	62	63	75	362
Green's Farms	58	67	72	82	82	70	431
King's Highway	74	79	70	107	93	85	508
Long Lots	73	81	76	90	92	99	511
Saugatuck	71	74	74	74	68	88	449
<b>TOTAL</b>	<b>326</b>	<b>356</b>	<b>349</b>	<b>415</b>	<b>398</b>	<b>417</b>	<b>2,261</b>

Westport Public Schools Elementary School Enrollment Projections 2024-25							
School	K	1	2	3	4	5	K-5th
Coleytown	53	55	55	60	63	64	350
Green's Farms	61	67	68	72	78	88	434
King's Highway	78	79	82	88	74	106	507
Long Lots	77	80	81	87	81	95	501
Saugatuck	75	74	74	77	74	73	447
<b>TOTAL</b>	<b>344</b>	<b>355</b>	<b>360</b>	<b>384</b>	<b>370</b>	<b>426</b>	<b>2,239</b>

# APPENDIX: Individual Elementary Projections

## Medium Projection Scenario

Westport Public Schools Elementary School Enrollment Projections 2025-26							
School	K	1	2	3	4	5	K-5th
Coleytown	53	57	58	57	63	62	350
Green's Farms	62	67	70	69	77	78	423
King's Highway	80	81	84	86	88	73	492
Long Lots	80	82	83	83	89	84	501
Saugatuck	77	77	76	74	76	74	454
<b>TOTAL</b>	<b>352</b>	<b>364</b>	<b>371</b>	<b>369</b>	<b>393</b>	<b>371</b>	<b>2,220</b>

Westport Public Schools Elementary School Enrollment Projections 2026-27							
School	K	1	2	3	4	5	K-5th
Coleytown	55	57	59	60	60	63	354
Green's Farms	64	69	70	72	73	77	425
King's Highway	81	83	86	88	86	86	510
Long Lots	80	84	85	86	85	92	512
Saugatuck	78	78	79	77	73	77	462
<b>TOTAL</b>	<b>358</b>	<b>371</b>	<b>379</b>	<b>383</b>	<b>377</b>	<b>395</b>	<b>2,263</b>

# APPENDIX: Individual Middle Projections

## Medium Projection Scenario

Westport Public Schools Middle School Enrollment 2017-18				
School	6	7	8	6-8th
Bedford	269	288	287	844
Coleytown	161	166	168	495
<b>TOTAL</b>	<b>430</b>	<b>454</b>	<b>455</b>	<b>1,339</b>

Westport Public Schools Middle School Enrollment 2020-21				
School	6	7	8	6-8th
Bedford	232	262	280	774
Coleytown	153	176	145	474
<b>TOTAL</b>	<b>385</b>	<b>438</b>	<b>425</b>	<b>1,248</b>

Westport Public Schools Middle School Enrollment 2018-19				
School	6	7	8	6-8th
Bedford	273	273	292	838
Coleytown	144	161	166	471
<b>TOTAL</b>	<b>417</b>	<b>434</b>	<b>458</b>	<b>1,309</b>

Westport Public Schools Middle School Enrollment 2021-22				
School	6	7	8	6-8th
Bedford	255	235	266	755
Coleytown	158	154	176	488
<b>TOTAL</b>	<b>413</b>	<b>389</b>	<b>442</b>	<b>1,243</b>

Westport Public Schools Middle School Enrollment 2019-20				
School	6	7	8	6-8th
Bedford	258	276	277	811
Coleytown	176	145	161	482
<b>TOTAL</b>	<b>434</b>	<b>421</b>	<b>438</b>	<b>1,293</b>

Westport Public Schools Middle School Enrollment 2022-23				
School	6	7	8	6-8th
Bedford	235	259	238	732
Coleytown	148	158	154	460
<b>TOTAL</b>	<b>383</b>	<b>417</b>	<b>392</b>	<b>1,192</b>



# APPENDIX: Individual Middle Projections

## Medium Projection Scenario

Westport Public Schools Middle School Enrollment 2023-24				
School	6	7	8	6-8th
Bedford	256	238	263	757
Coleytown	161	149	158	468
TOTAL	417	387	421	1,225

Westport Public Schools Middle School Enrollment 2025-26				
School	6	7	8	6-8th
Bedford	271	244	263	778
Coleytown	157	162	162	481
TOTAL	428	406	425	1,259

Westport Public Schools Middle School Enrollment 2024-25				
School	6	7	8	6-8th
Bedford	241	258	241	740
Coleytown	161	162	149	472
TOTAL	402	420	390	1,212

Westport Public Schools Middle School Enrollment 2026-27				
School	6	7	8	6-8th
Bedford	231	275	248	754
Coleytown	142	157	162	461
TOTAL	373	432	410	1,215