



Westport Public Schools

10-Year Enrollment Projections Update

November 7, 2022



Contents

- Projections Review
- Enrollment Drivers – Demographics and Housing
- Student Enrollment Trends & Analysis
- Enrollment Projection Update
- Appendices



Projections Comparison

High Comparison	K	1	2	3	4	5	6	7	8	9	10	11	12	K to 5	6 to 8	9 to 12	Total
2022-23 Actual	389	424	402	378	397	426	386	432	377	417	412	417	448	2,416	1,195	1,694	5,305
2022-23 Projected (High)	364	437	407	380	395	416	374	412	372	399	404	407	431	2,399	1,158	1,641	5,198
Deviation	25	(13)	(5)	(2)	2	10	12	20	5	18	8	10	17	17	37	53	107
% Diff.	6.9%	-3.0%	-1.2%	-0.5%	0.5%	2.4%	3.2%	4.9%	1.3%	4.5%	2.0%	2.5%	3.9%	0.7%	3.2%	3.2%	2.1%
Medium Comparison	K	1	2	3	4	5	6	7	8	9	10	11	12	K to 5	6 to 8	9 to 12	Total
2022-23 Actual	389	424	402	378	397	426	386	432	377	417	412	417	448	2,416	1,195	1,694	5,305
2022-23 Projected (Med)	350	433	406	380	395	416	372	409	372	395	402	404	429	2,380	1,153	1,630	5,163
Deviation	39	(9)	(4)	(2)	2	10	14	23	5	22	10	13	19	36	42	64	142
% Diff.	11.1%	-2.1%	-1.0%	-0.5%	0.5%	2.4%	3.8%	5.6%	1.3%	5.6%	2.5%	3.2%	4.4%	1.5%	3.6%	3.9%	2.8%
Low Comparison	K	1	2	3	4	5	6	7	8	9	10	11	12	K to 5	6 to 8	9 to 12	Total
2022-23 Actual	389	424	402	378	397	426	386	432	377	417	412	417	448	2,416	1,195	1,694	5,305
2022-23 Projected (Low)	330	433	402	379	394	414	371	405	370	393	402	404	429	2,352	1,146	1,628	5,126
Deviation	59	(9)	0	(1)	3	12	15	27	7	24	10	13	19	64	49	66	179
% Diff.	17.9%	-2.1%	0.0%	-0.3%	0.8%	2.9%	4.0%	6.7%	1.9%	6.1%	2.5%	3.2%	4.4%	2.7%	4.3%	4.1%	3.5%

- Actual 2022-22 enrollment is higher than all three projections models
- Middle and high school enrollments were significantly higher than projected under all three models
- Elementary enrollment was 36 students (1.5%) higher than the high model, with Kindergarten driving the delta at +39 students
- High model performed the best, although still underestimated enrollment by ~2%



Projections Comparison by Elementary

- Kindergarten enrollment higher than projected at all schools except King's Highway, with the greatest difference at Long Lots (+18) and Saugatuck (+13)
- Greatest K-5 deviation at Coleytown (+11) and Kings Highway (+15)
- Green's Farms, Long Lots, and Saugatuck within 5 students overall of projections
- Smaller growth rates in grade 1-5 cohorts in Saugatuck and Long Lots offset larger Kindergarten class

School	Enroll	K	1	2	3	4	5	K-5
Coleytown	Actual	74	82	82	76	79	84	477
	Projected	68	81	84	77	74	82	466
	Difference	6	1	(2)	(1)	5	2	11
Green's Farms	Actual	72	84	84	74	76	69	459
	Projected	64	89	86	73	75	67	454
	Difference	8	(5)	(2)	1	1	2	5
King's Highway	Actual	64	83	70	71	87	74	449
	Projected	70	78	64	71	81	70	434
	Difference	(6)	5	6	0	6	4	15
Long Lots	Actual	104	105	95	94	88	115	601
	Projected	86	112	98	94	93	114	597
	Difference	18	(7)	(3)	0	(5)	1	4
Saugatuck	Actual	75	70	71	63	67	84	430
	Projected	62	73	74	65	72	83	429
	Difference	13	(3)	(3)	(2)	(5)	1	1
Total All Schools	Actual	389	424	402	378	397	426	2,416
	Projected	350	433	406	380	395	416	2,380
	Difference	39	(9)	(4)	(2)	2	10	36
% Difference		11.1%	-2.1%	-1.0%	-0.5%	0.5%	2.4%	1.5%



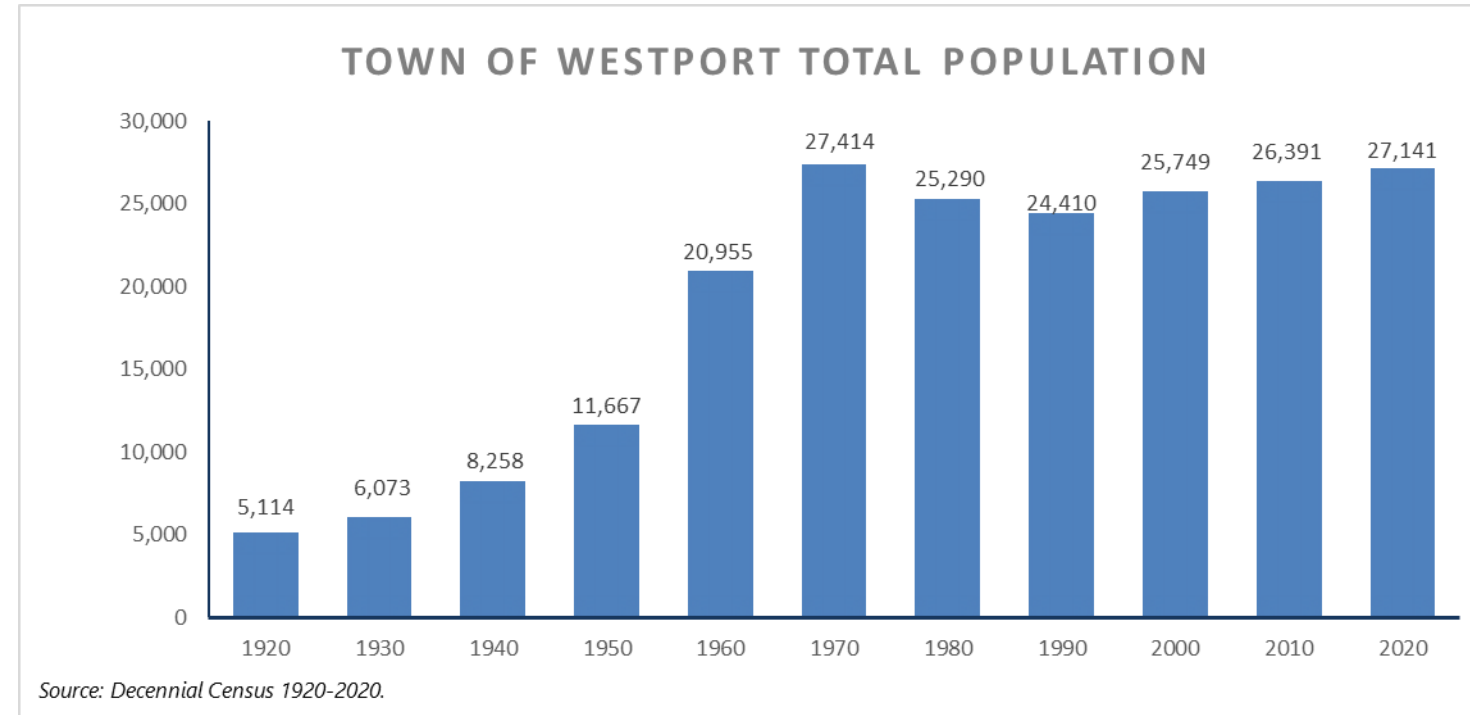
Enrollment Drivers

Enrollment Drivers



Westport's Population

- According to 2020 Decennial Census, Westport's total population grew by 750 or 2.8% over the last decade.
- Impacts from the pandemic over the last 18 months not captured in 2020 census counts

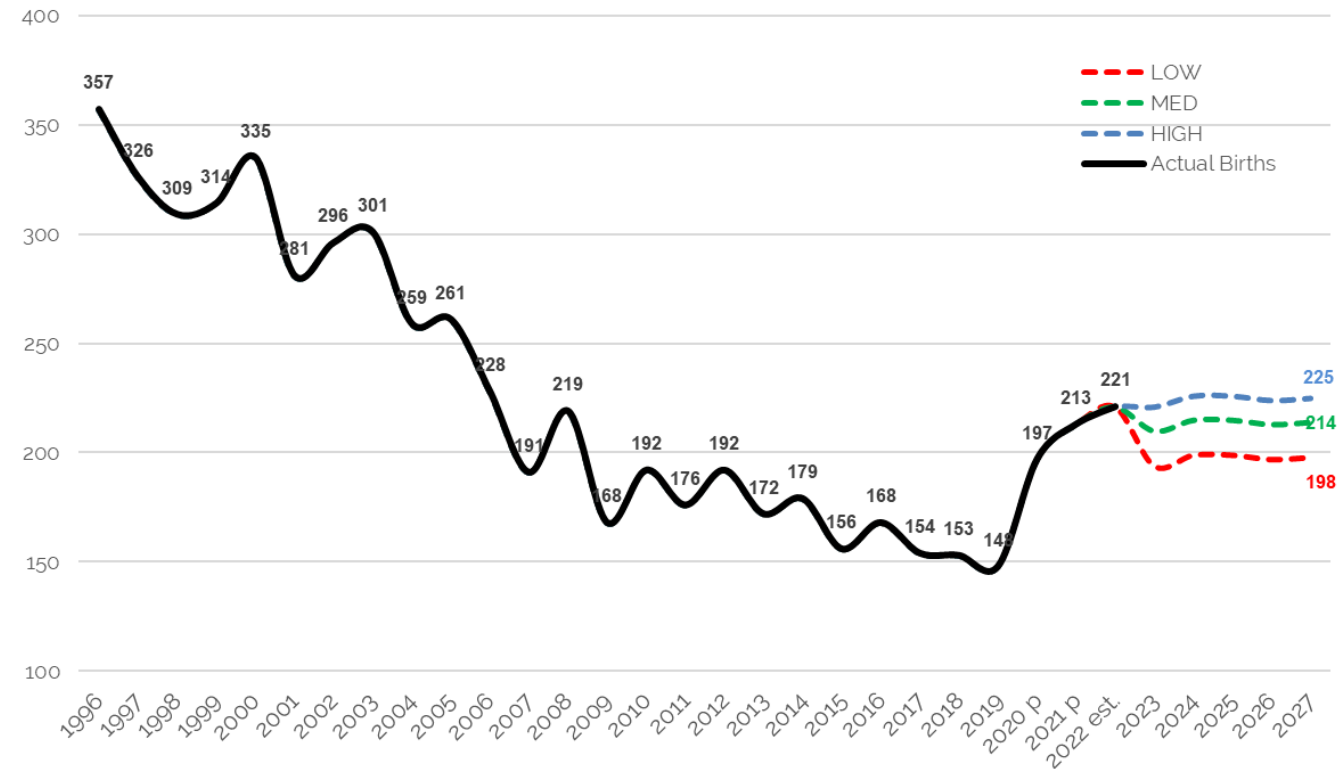




Reported Birth & Projections

- Year-to-date births through September (166) are highest since 2005. 2022 is on pace for an estimated 221 births for the full year
- Average of 210 births over the last three years, compared to an average of 152 for the three years prior.
- Recent uptick in births not captured in demographic-based models
- Mathematical models assume different growth factors for high, medium, and low birth projections
- All three models yield a continuation of the elevated births for 2023-27.
 - Low model: avg. 197 (194-199)
 - Medium model: avg. 213 (210-2015)
 - High model: avg. 224 (221-226)

Westport Actual and Projected Births: 1996 to 2027

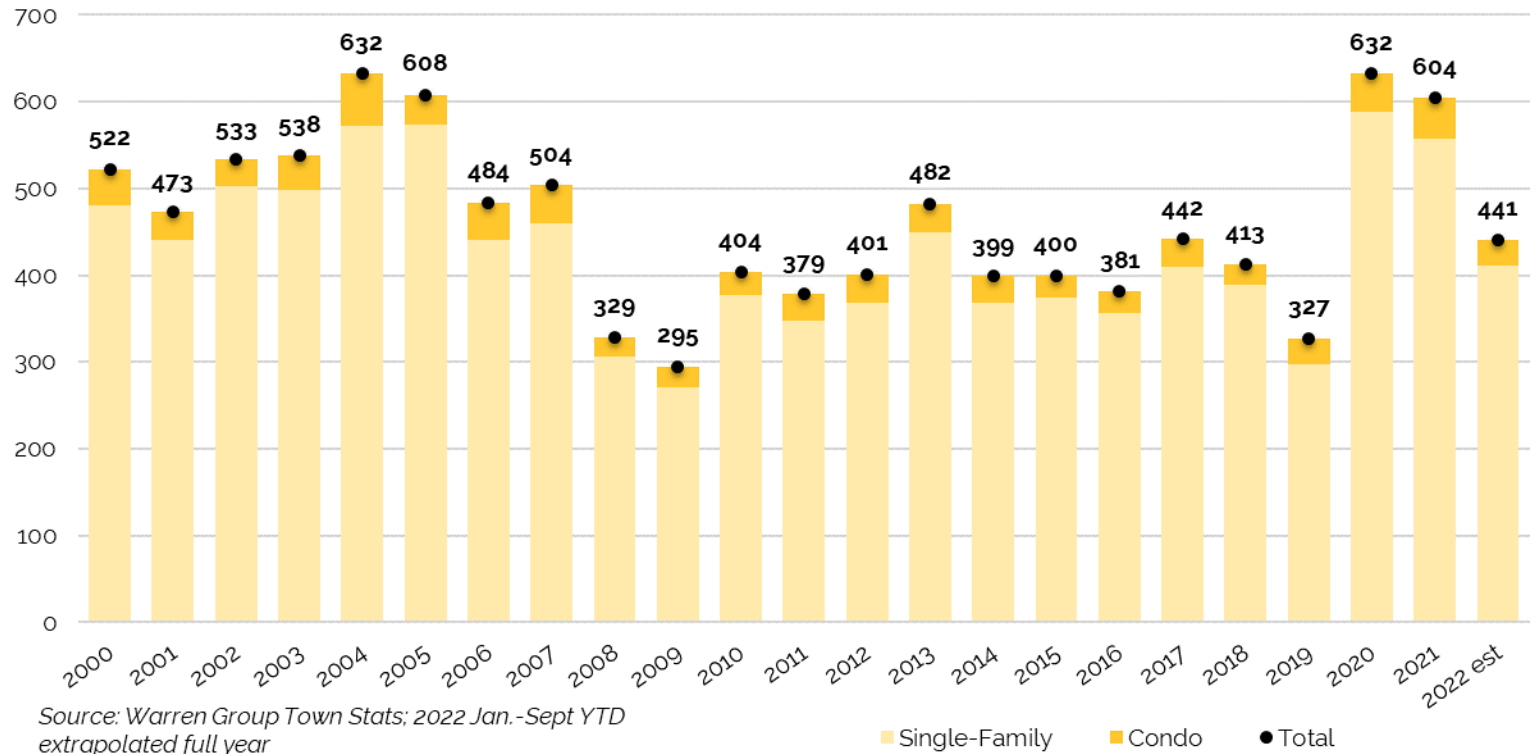




Housing Market

- Significant jump in sales in 2020 and 2021, with sales equaling peak seen in the mid-2000s prior to the Great Recession
- Sales have slowed in 2022, with YTD sales on pace for only 441, (411 single-family homes, and 30 condos)
- YTD 2022 sales in line with levels seen in 2017 and 2018

Westport Home Sales (2000-2022)

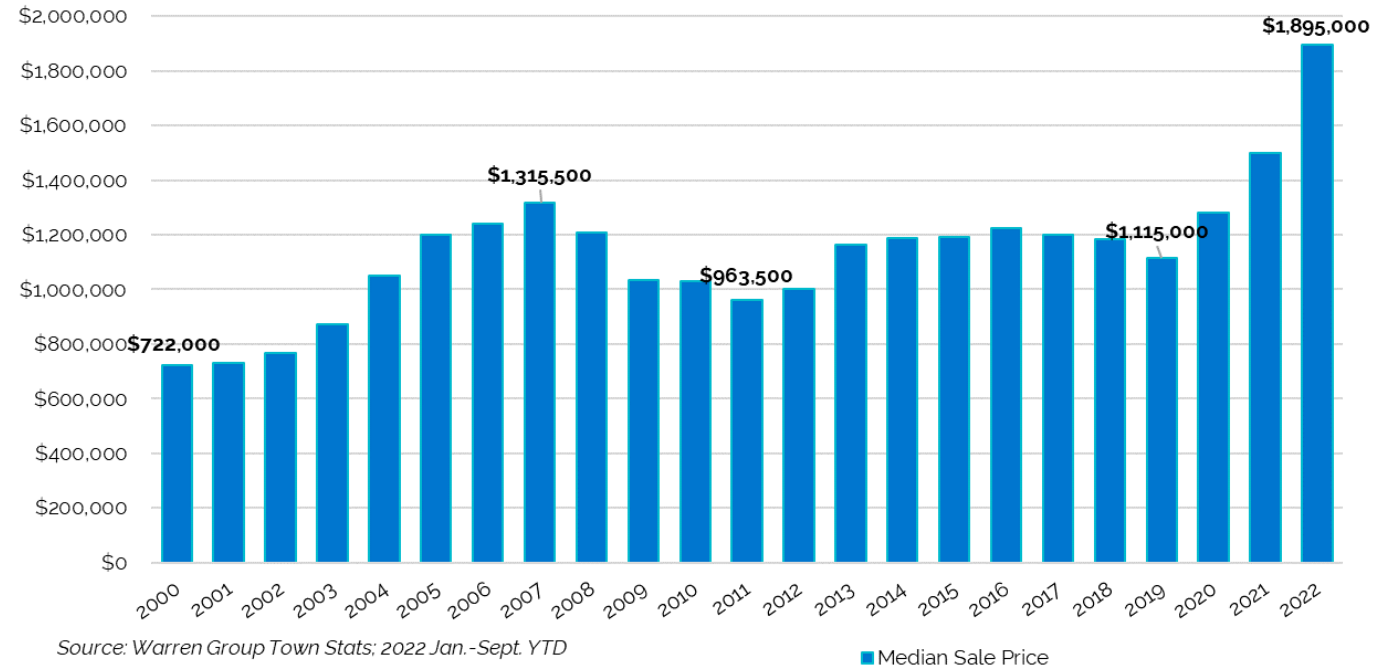




Housing Market

- 2022 YTD median single family sale price has increased to \$1.895 million. Sale price is up from \$1.115 million in 2019
- Single-family home sale prices now greatly exceed levels during the prior to the housing peak in the early 2000's
- Median sale price for condos is \$850K YTD, up from \$575K in 2019

Westport Median Sale Price Single Family Homes (2000-2022 YTD)



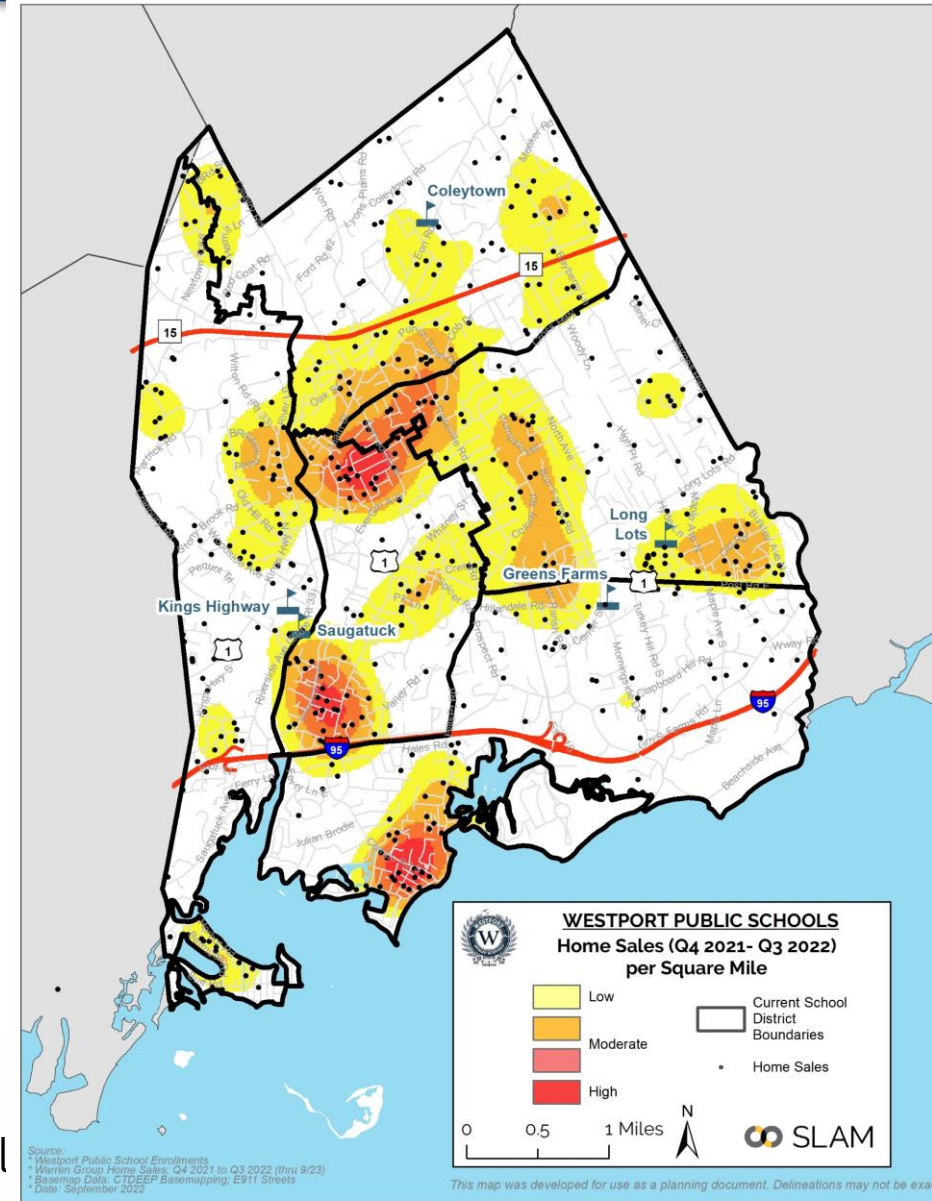


Home Sale “Hotspot”

- The greatest density of recent home sales are located near Compo Cove, Route 1, and the neighborhoods around Compo Rd and Main St.
- Current hotspot map shows similar pattern to 2021 analysis, albeit driven by fewer home sales
- Historically, Long Lots and Greens Farms have the greatest share of sales while Coleytown and Saugatuck have the lowest share of sales
 - However, notable uptick in sales in Coleytown for 2022-23 school year

Distribution of Home Sales, by Attendance Zone

School	2018	2019	2020	2021	2022 YTD	5-Year Avg
Coleytown	16.4%	16.8%	16.5%	17.0%	19.8%	17.1%
Greens Farms	21.4%	22.2%	22.2%	21.1%	19.5%	21.4%
Kings Highway	19.1%	23.6%	19.0%	21.1%	22.8%	20.8%
Long Lots	21.2%	22.2%	24.4%	23.6%	22.5%	23.0%
Saugatuck	21.9%	15.1%	18.0%	17.2%	15.4%	17.7%

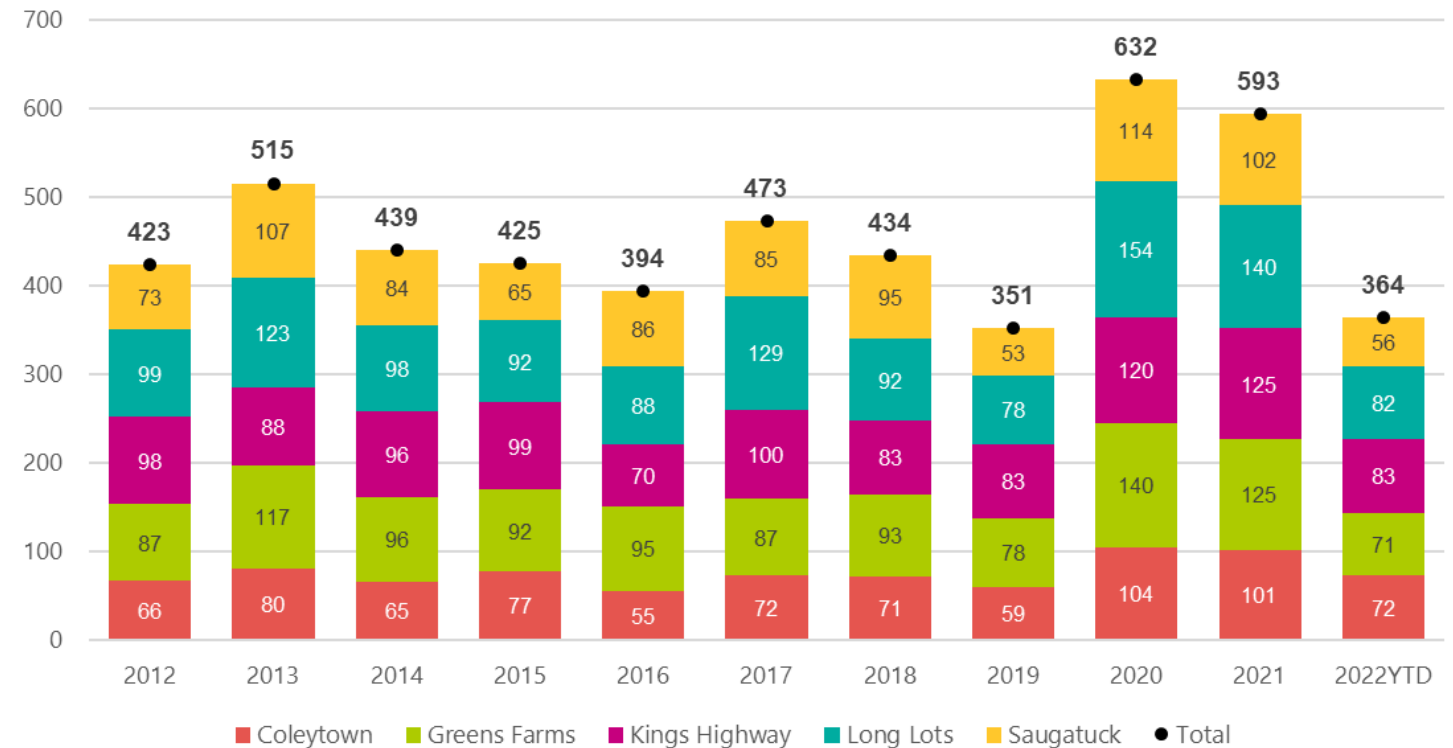




Housing Market

- Much higher sales throughout all elementary districts in 2020 and 2021.
- 2022 Year-to-date home sales through September are below levels seen over the last two years, but are still trending slightly above pre-pandemic levels
- Coleytown has a greater share of sales in 2022 compared to historic average

**Westport Home Sales by Elementary District
2012 to 2022 YTD**



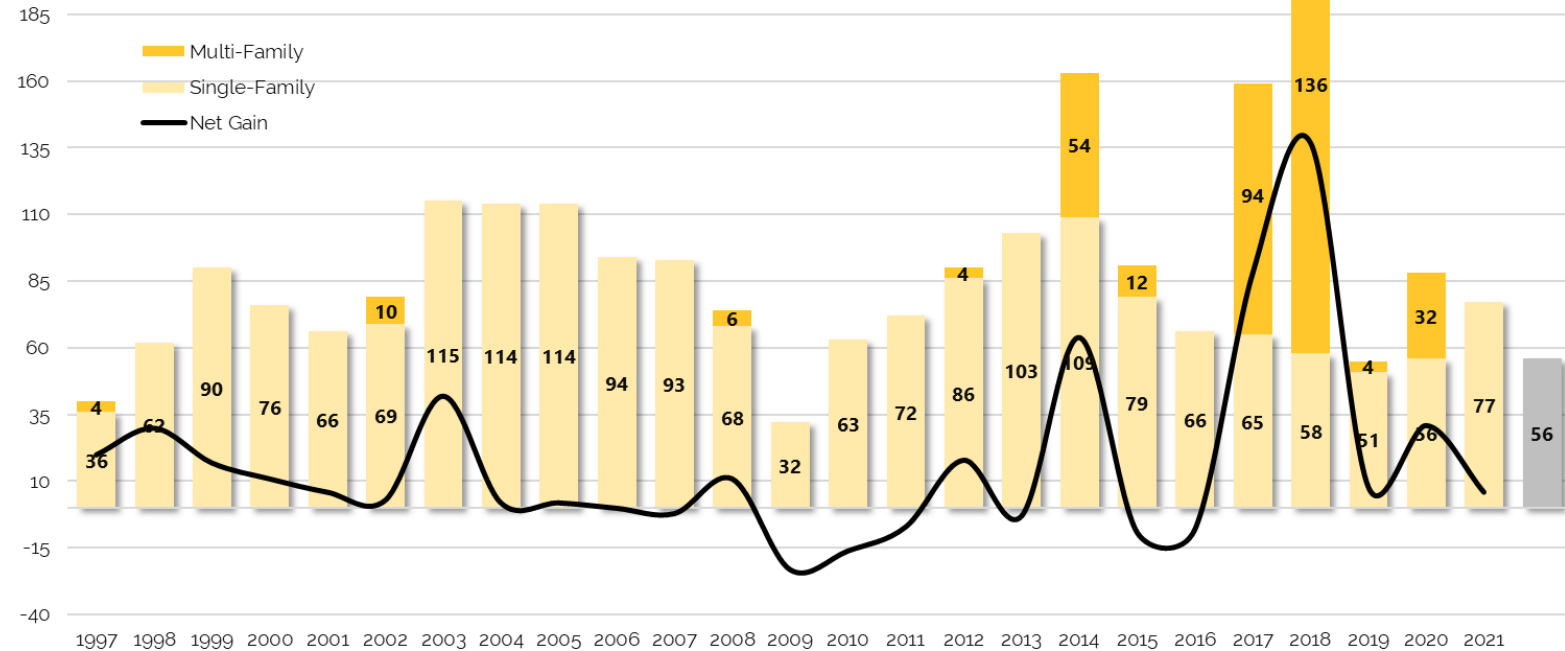
Source: The Warren Group. YTD sales based on Q1-Q3. Totals differ slightly from town-wide totals due to differences in reporting methodology



Housing Trends

- Teardown/rebuilds predominate in a largely built-out community; over the last ten years, Westport has seen 750 single-family permits, and 754 demolition permits
- Sizable net gains in 2017 and 2018 tied to new multi-family construction
- 2022 YTD through October is showing a net loss of roughly 20 units with demolitions exceeding newly permitted units

Housing Permits 1990-2022 YTD



Source: DECD, 2021. Westport Planning Department October 2022. 2022 YTD permits are through October. Unit type and demolition data is not available for 2022.



Recent and Approved Housing

Address	Status	Total Units	Affordable Units	Approval Date
793 Post Road East	Constructed	28	6	3/15/2018
33 Elm Street	Constructed	4	1	3/15/2018
500 Main Street (Daybreak)	Constructed	9	0	6/14/2018
201 Main Street (Belden Place)	Constructed	14	3	4/23/2020
1480 Post Road East	Constructed	32	7	11/27/2019
54 Wilton Road	Constructed	12	0	4/25/2018
260 Riverside Avenue	Constructed	9	2	10/8/2020
41 Richmodville Avenue	Under Construction	33	7	6/25/2020
553, 570 & 580 Riverside Ave/9 Ketchum St	Approved	17	3	10/17/2019
122 Wilton Road	Approved	19	6	10/22/2020
Cross Street LLC "The Westport Residences"	Approved	68	25	6/17/2021
Hiawatha Lane	Approved	157	47	5/12/2021
950 Post Road	Approved	14		5/27/2021

Source: Town of Westport Planning Department, October 2022

- No major projects of scale approved in the last 12 months
- However, there are still several large multi-family developments that have been approved but not yet built, including Hiawatha Lane (157 units) and Cross Street (68 units). These projects are carried forward and student generation is included in the projections



Recent and Approved Housing

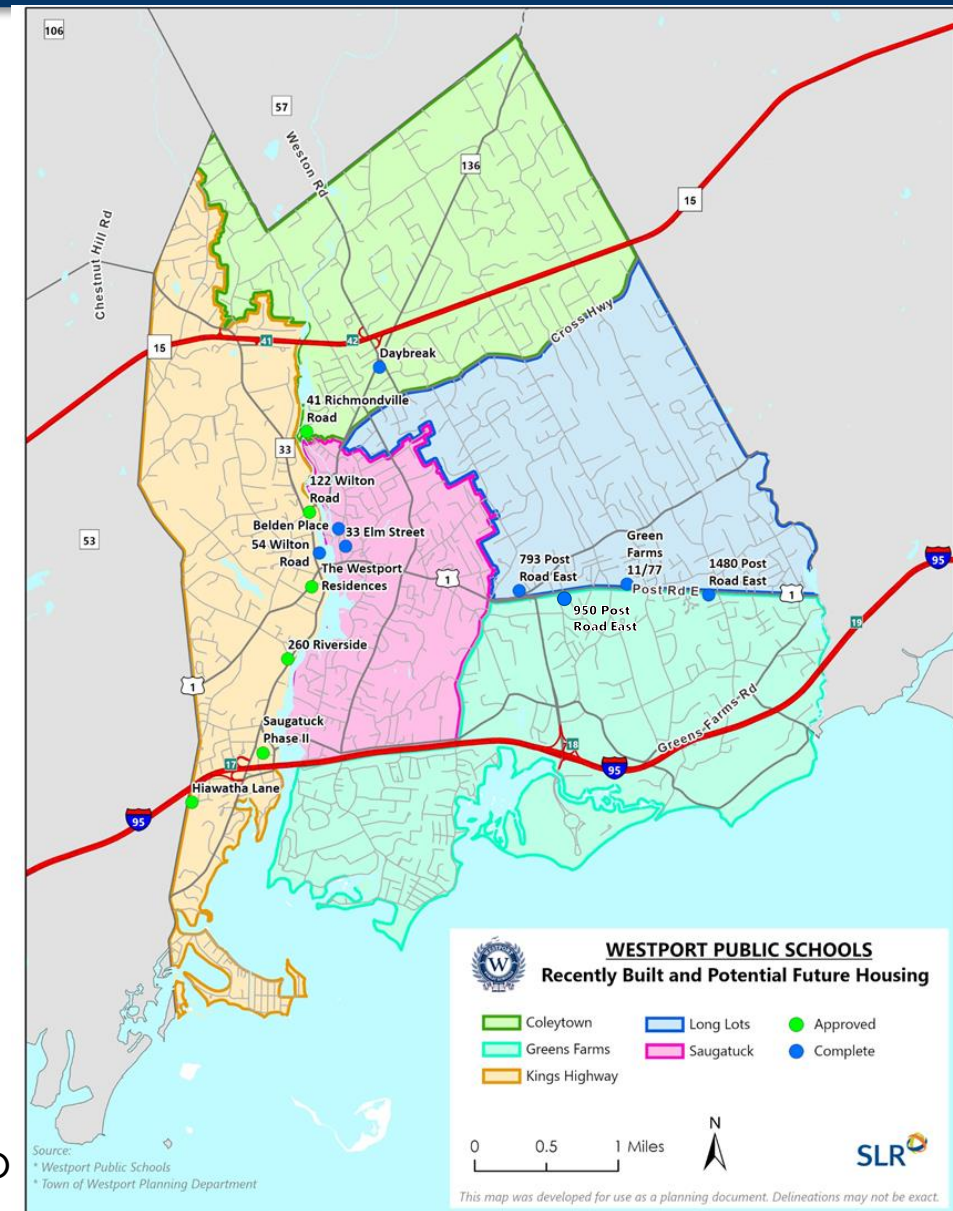
- Recent and approved housing is primarily concentrated in Downtown Westport and the Post Road/Route 1 Corridor
- Approved Hiawatha Lane & Cross Street "The Westport Residences" are located in Kings Highway attendance zone
- Student generation from future housing was estimated by examining enrollments in other condominium and apartment developments in Westport as well as review of ESI Multipliers

Apartment Comps

Hales Court
Hidden Brook/Sasco Creek
Greens Farms 11/77

Condo Comps

Harvest Commons
Regents Park
Terra Nova Cir
793 Post Road East





Estimated Student Generation

Estimated Students Generated from Approved Housing Developments

Address	Status	Total Units	Estimated Student Generation			
			Elementary	Middle	High	Total
553, 570 & 580 Riverside Ave/9 Ketchum St	Approved	17	1	1	1	3
950 Post Road	Approved	14	1	0	1	2
122 Wilton Road	Approved	19	2	1	1	4
Cross Street LLC "The Westport Residences"	Approved	68	7	4	7	18
Hiawatha Lane	Approved	157	16	8	16	40
Total:		275	27	14	26	67

Source: Town of Westport Planning Department, October 2022

Multipliers and student generation developed based on comparable apartment and condo properties in Westport & ESI Multipliers

- For Hiawatha Lane and the Cross Street Development, enrollment multipliers have been phased into the projections starting in 2024-25
- Smaller projects are captured in the baseline persistency ratios and are “built in” to the projections model



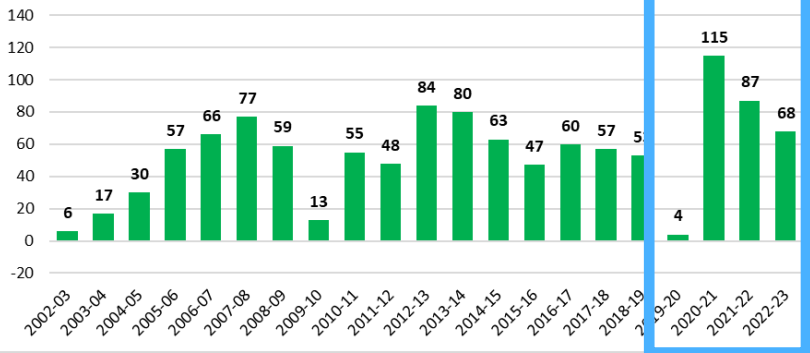
Enrollment Trends & Analysis

Enrollment Trends & Analysis

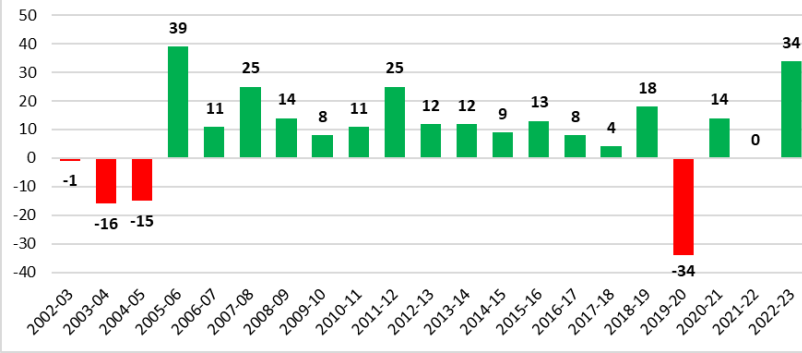


Net Migration

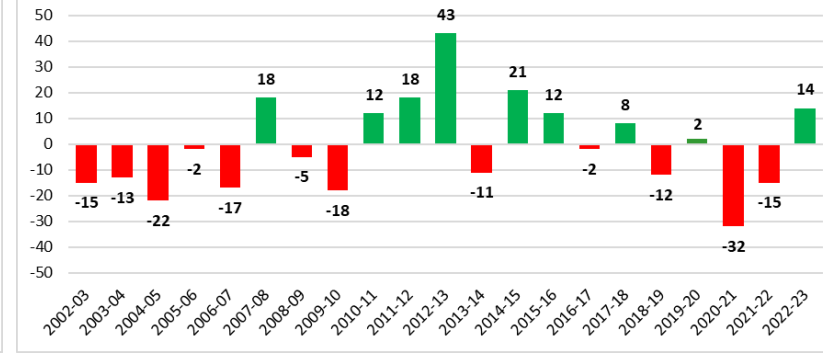
Historic Elementary Net Migration



Historic Middle School Net Migration



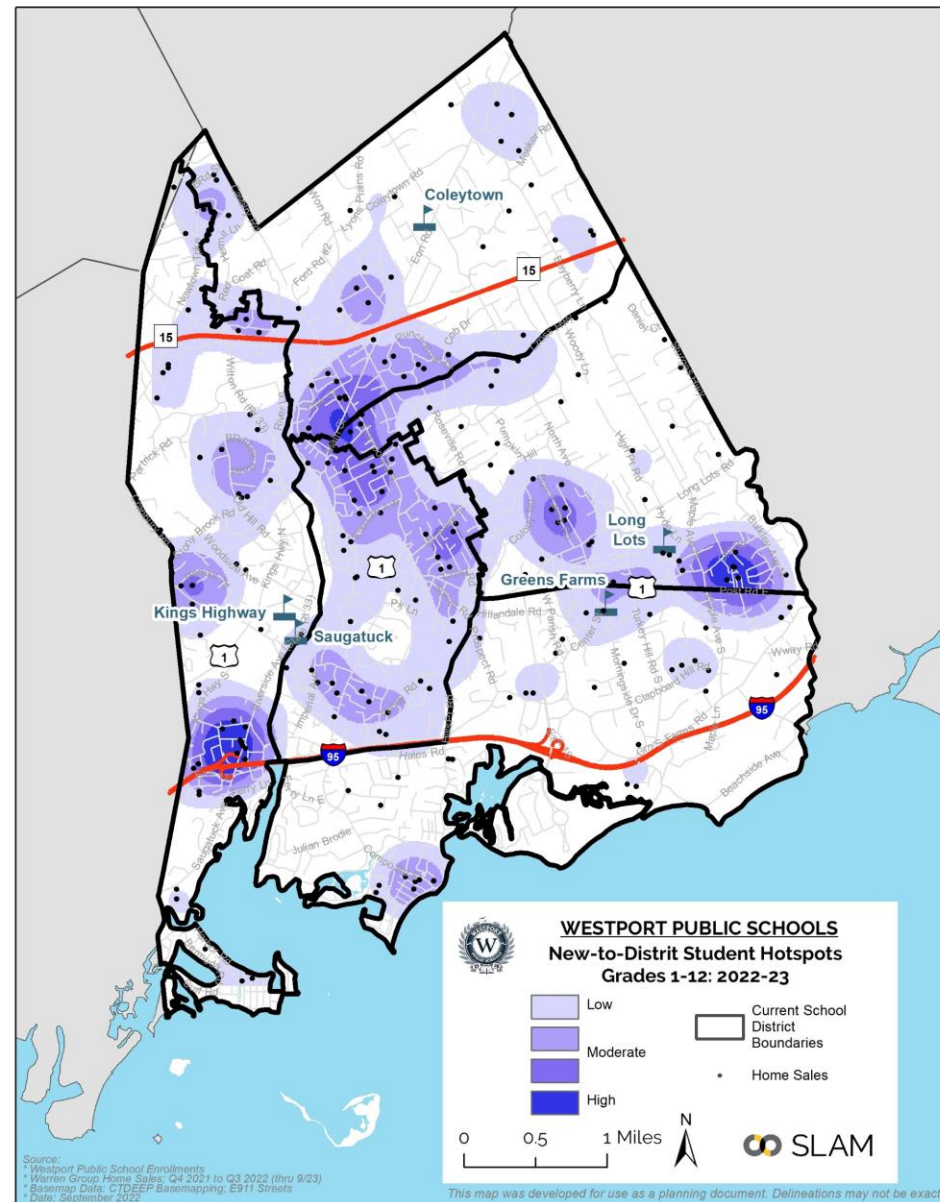
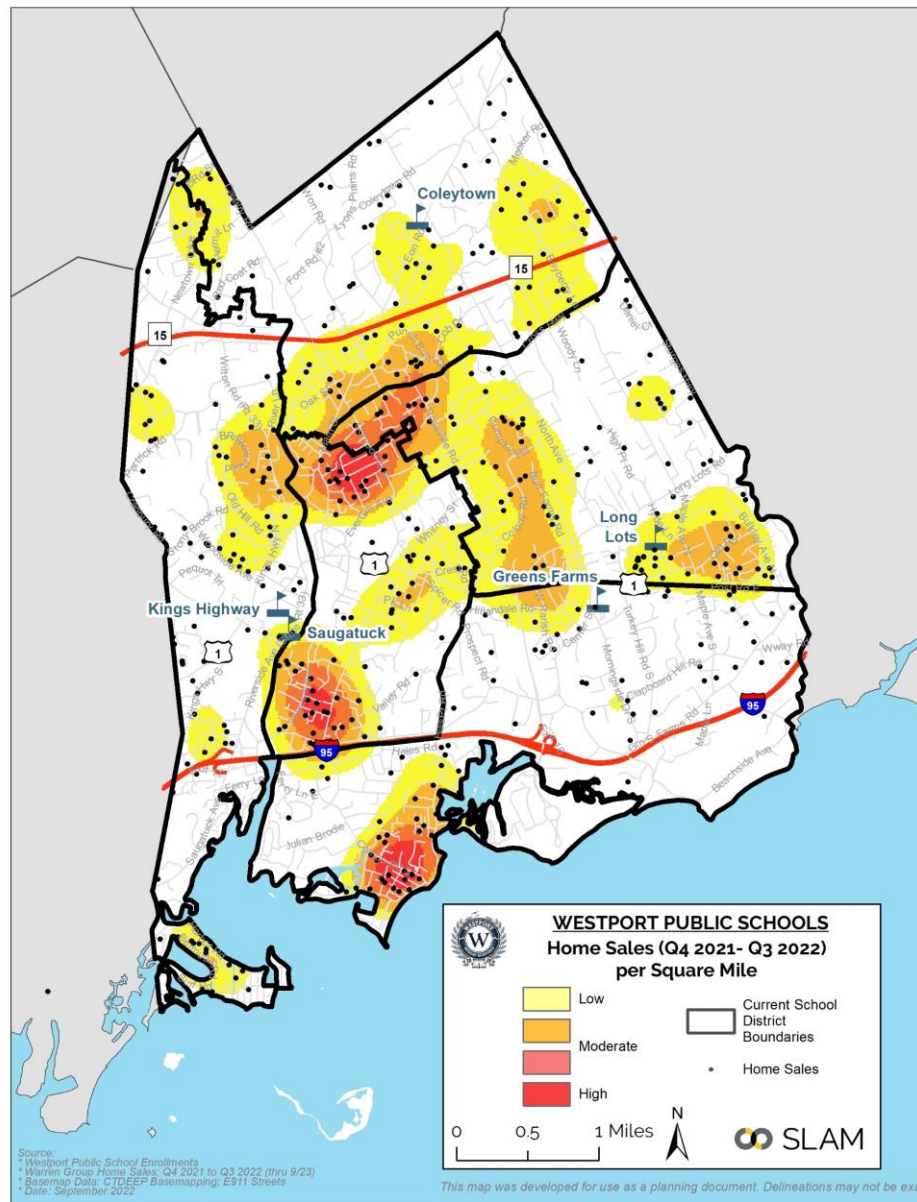
Historic High School Net Migration



- Elementary net in-migration continues to be above levels seen in 2014-15 through 2018-19, although lower than highs seen in 2020-21 and 2021-22.
- After experiencing net out-migration of -34 students in 2019-20, middle school net migration has increased, reaching +34 students in 2022-23.
- After two years of high school net out-migration in 2020-21 and 2021-22, WPS saw net in-migration for the 2022-23 school year at +14 students.

Housing Market & Student Migration

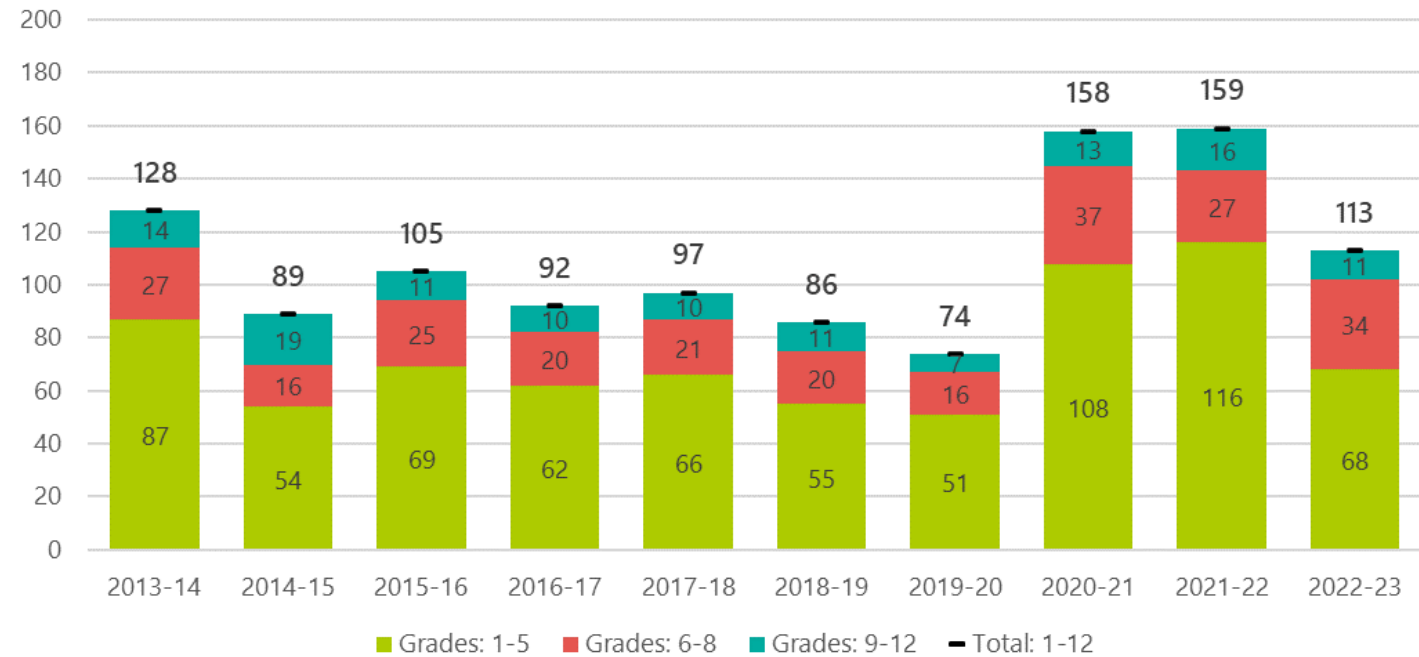
- A side-by-side comparison of “Hot Spots” for home sales and “New Students” shows a good alignment



Housing Market & Student Migration

- Matching of known home sales to students entering the system (unique ID not present in prior year) yields an estimate of students generated from housing turnover
- The pandemic influenced housing market has resulted in significant in-migration into the district, especially at the elementary level
- Number of students matched to home sales in 2022-23 is slightly higher than pre-pandemic levels, however, is well below peak seen in the two prior years

New to District Students Attributed to the Prior Year's Home Sales (2013-14 to 2022-23)



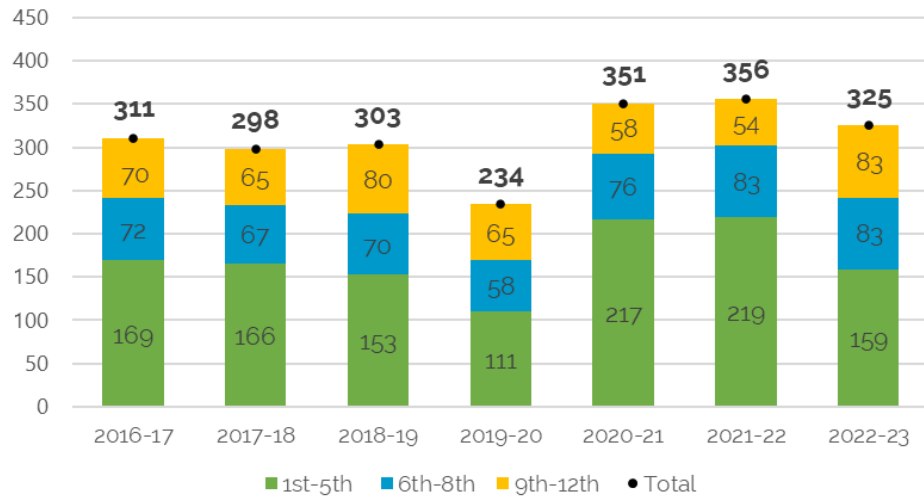
Source: Westport Public Schools, Warren Group

To be counted as matching sale home must be sold between Q4 of previous year, and Q1-Q3 of current year

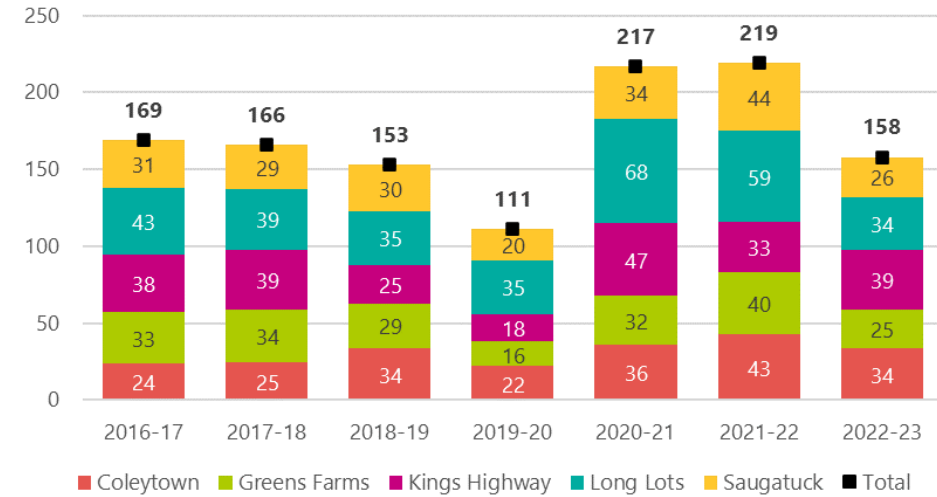


Student Migration

New-to-District Students By Grade Grouping



New-to-District Students (Grades 1-5)



- The total number of “New Students” was identified by comparing unique student identifiers (SASID's) that were not enrolled the previous year (excludes K). This includes students that are attributed to home sales on the previous slide
- Overall, new to districts students was down ~30 students from prior 2-years. However, there was a notable increase of ~30 HS students for 2022
- For Grades 1-5, there were a total of 158 new to district students, which is on par with pre-pandemic levels and well below record levels seen in 2020-21 and 2021-22

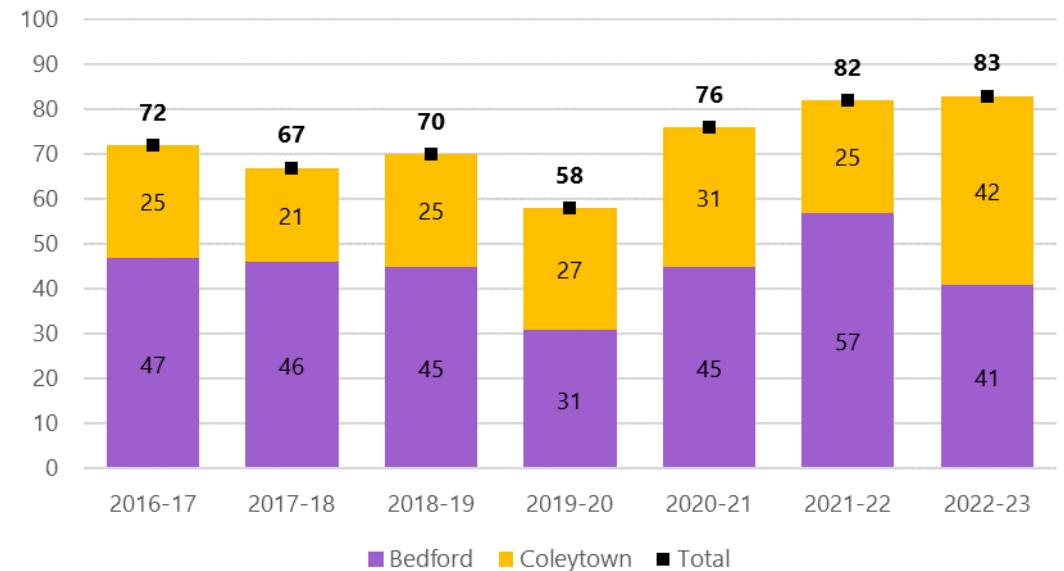


Student Migration

- For 2022-23, “New to District” Middle School students is slightly elevated, but still on par with recent history, except for 2019-20 which was anomalously low
- Historically, BMS has more new-to-district students. However, 2022-23 had more new-to-district students in CMS

Note: *2019-20 and 2020-21 enrollment data assigned to CMS or BMS based on address

New-to-District Students (Grades 6-8)



New-to-District Students by School (Grades 6-8)

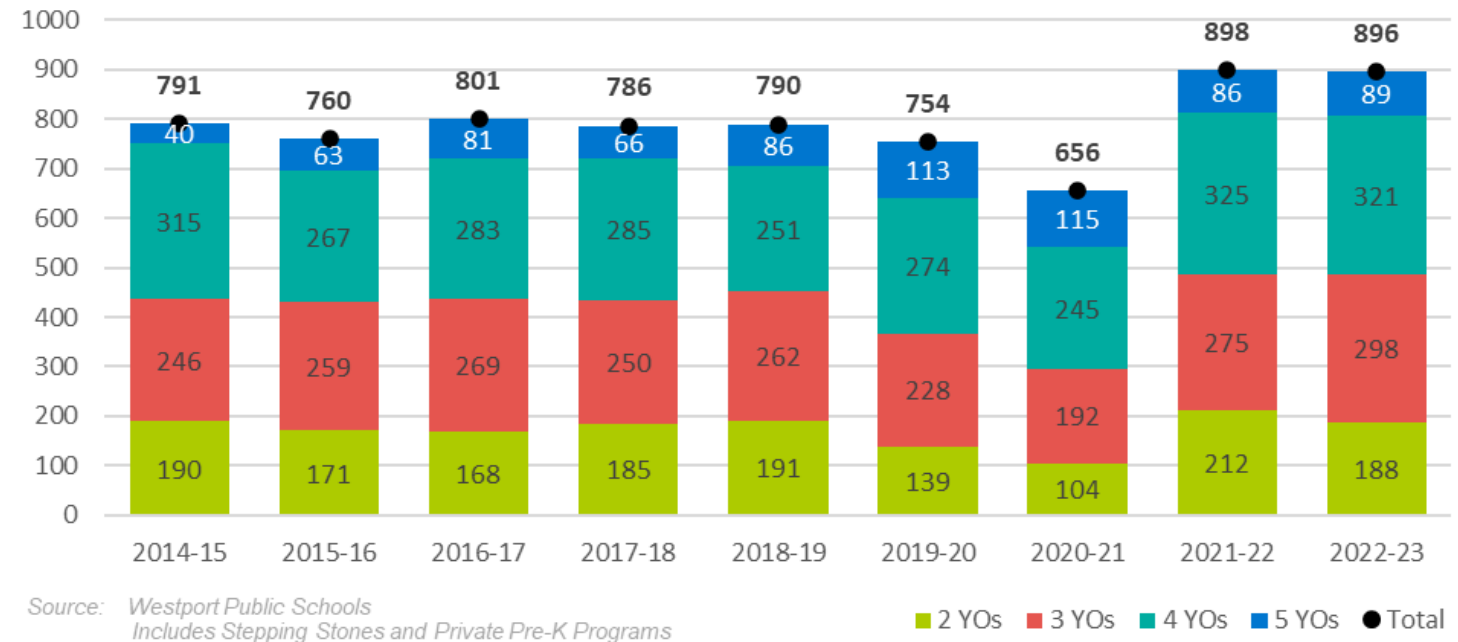
School Name	2016-17	2017-18	2018-19	2019-20	2020-21	2021-22	2022-23
Bedford	47	46	45	31	45	57	41
Coleytown	25	21	25	27	31	25	42
Total	72	67	70	58	76	82	83



Pre-K Analysis

- WPS tracks enrollment of Westport residents in public and private Pre-K programs.
- In the years leading up to the pandemic, enrollment was stable between 750-800 per year, with the highest enrollment in the PK4 cohort.
- Sharp decrease in 2020-21 followed by sharp increase over the last two years, averaging nearly 900 students.
- For 2022-23, the PK4 and PK3 cohorts are larger than the historic average, while the PK2 cohort has returned to pre-pandemic levels

Westport Pre-K Enrollment, by Age

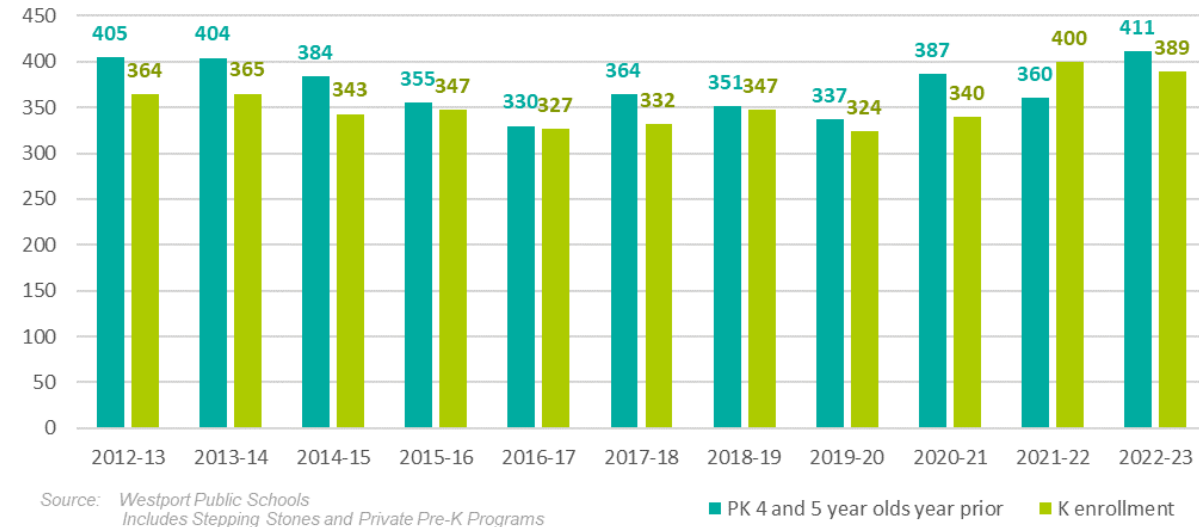




Pre-K Analysis

- Historically WPS Kindergarten enrollment is about 95% the size of the corresponding PK4 and PK5 class the year prior.
- Using Pre-K to Kindergarten progression ratios would have more accurately predicted kindergarten enrollment this past year.
 - This method works well for a 1-year forecast but is not as reliable for long-term forecasting due to impact of in-migration.
- Given higher-than-average enrollment in the current PK3 and PK4 cohort, we would anticipate larger kindergarten classes for the next two years.
- Given the return of the PK2 cohort to pre-pandemic levels suggests that Kindergarten enrollment will eventually revert to historic trends.
- From the Pre-K Analysis, near term K projection models were modified accordingly

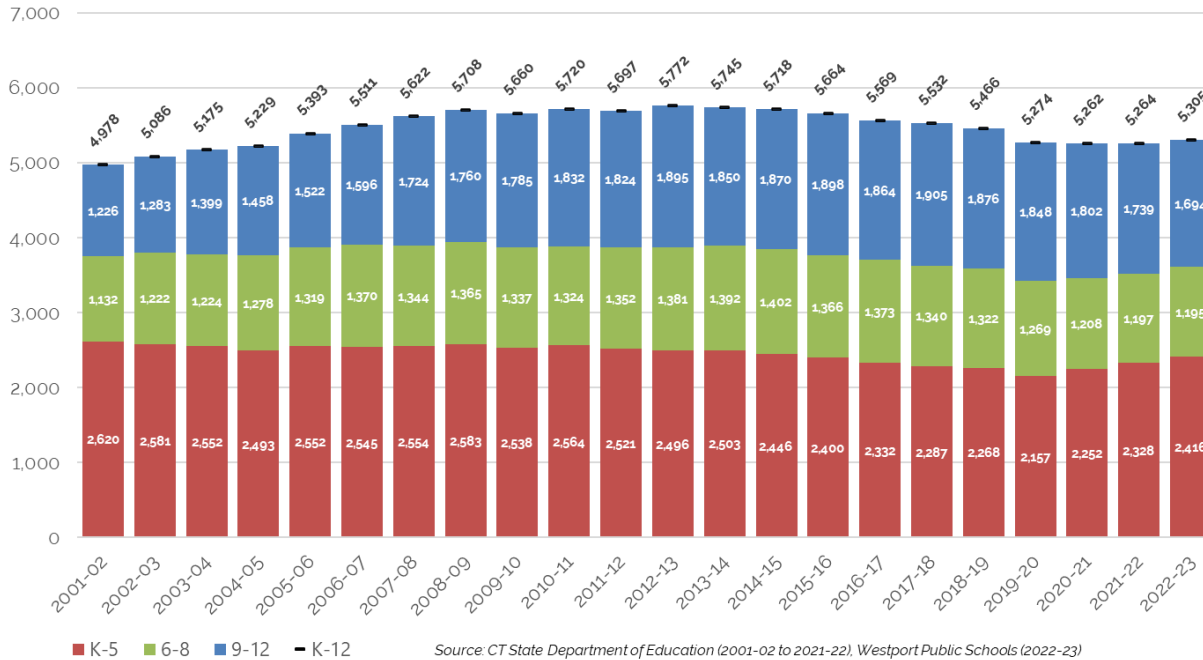
Comparison of Kindergarten Enrollment and PK4/5 Enrollment the Year prior





Historic Enrollments

Westport Public Schools Historic K-12 Enrollment
(2001-02 to 2022-23)



Westport Public School Enrollment History
Pre-Kindergarten to 12th Grade

School Year	Birth Year	Births	K	1	2	3	4	5	6	7	8	9	10	11	12	PK
2001-02	1996	357	418	447	433	467	422	433	396	394	342	354	329	273	270	29
2002-03	1997	326	388	442	442	430	464	415	421	404	397	350	346	319	268	40
2003-04	1998	309	369	412	439	446	422	464	416	413	395	404	337	344	314	49
2004-05	1999	314	375	396	430	435	445	412	465	403	410	387	400	327	344	51
2005-06	2000	335	414	400	410	438	438	452	427	480	412	420	389	392	321	55
2006-07	2001	281	379	443	415	435	434	439	461	419	490	406	426	384	380	59
2007-08	2002	296	371	418	462	422	443	438	449	464	431	488	412	434	390	56
2008-09	2003	301	408	412	430	465	433	435	449	445	471	437	484	411	428	56
2009-10	2004	259	377	430	404	442	464	421	448	444	445	466	435	474	410	56
2010-11	2005	261	392	402	441	421	462	446	436	445	443	463	467	433	469	55
2011-12	2006	228	355	400	421	442	430	473	460	436	456	464	461	471	428	39
2012-13	2007	191	364	389	421	431	453	438	479	463	439	481	471	470	473	46
2013-14	2008	219	365	387	403	435	450	463	446	484	462	442	479	466	463	41
2014-15	2009	168	343	390	408	416	449	440	468	445	489	473	442	482	473	54
2015-16	2010	192	347	346	406	419	427	455	440	470	456	493	479	438	488	50
2016-17	2011	176	327	373	361	423	414	434	450	452	471	465	493	468	438	54
2017-18	2012	192	332	347	387	370	432	419	437	448	455	480	463	490	472	66
2018-19	2013	172	347	350	358	400	374	439	431	433	458	465	478	445	488	73
2019-20	2014	179	324	355	369	348	401	360	422	412	435	451	469	479	449	70
2020-21	2015	156	340	359	381	401	360	411	376	410	422	432	443	457	470	72
2021-22	2016	168	400	389	370	386	414	369	422	370	405	413	422	440	464	72
2022-23	2017	154	389	424	402	378	397	426	386	432	377	417	412	417	448	60

Source: State Department of Education, CeDar, 2001-02 to 2006-07; EdSight Enrollment Counts 2007-08 to 2019-20; Westport Public Schools 2020-21 to 2022-23
2022-23 data excludes outplaced students. 8 students in Connections program counted in 12th grade enrollment totals

- Overall, K-12 enrollment was stable since the 2019-20 school year, however, different trends have been experienced at elementary, middle and high
- Declining elementary enrollment experienced since 2008-09 peak through 2019-20 school year. However, over the last four years, elementary enrollment has increased by 12%, driven by two consecutive large kindergarten classes and increased in-migration.
- Middle and high school enrollment have both decreased over the last four years, offsetting gains at the elementary level.



K-5 Historic Enrollments

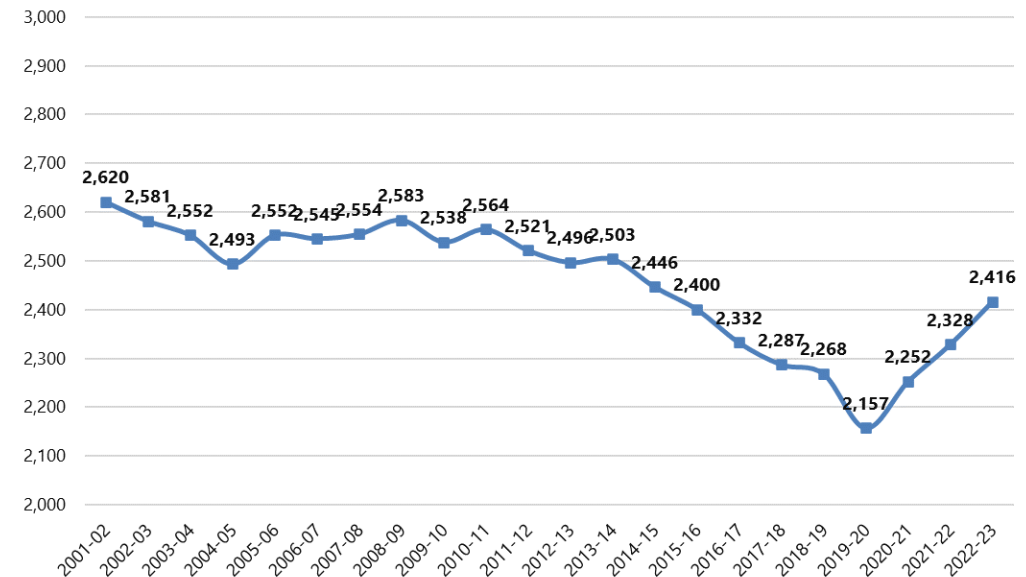
Historic Total Elementary (K-5) Enrollments
Westport Public Schools

Elementary School	2013-14	2014-15	2015-16	2016-17	2017-18	2018-19	2019-20	2020-21	2021-22	2022-23	5-Year Change	10-Year Change
Coleytown	451	410	411	377	369	383	391	424	446	477	29.3%	5.8%
Greens Farms	446	455	416	422	422	403	380	418	437	459	8.8%	2.9%
Kings Highway	498	498	491	495	463	471	446	451	447	449	-3.0%	-9.8%
Long Lots	578	560	560	545	545	544	519	554	576	601	10.3%	4.0%
Saugatuck	523	518	516	483	483	466	422	405	421	430	-11.0%	-17.8%

Includes enrollment in the GFS and LLS intensive programs

- Elementary enrollment increased by 259 students or ~12% since 2019-20.
- Elementary enrollment increase has been driven by increased in-migration, and another large kindergarten cohort this year
- All schools experienced an increase this past year
- Since 2019-20, the greatest enrollment increases have occurred at Coleytown (+86), Long Lots (+82), and Green's Farms (+79)

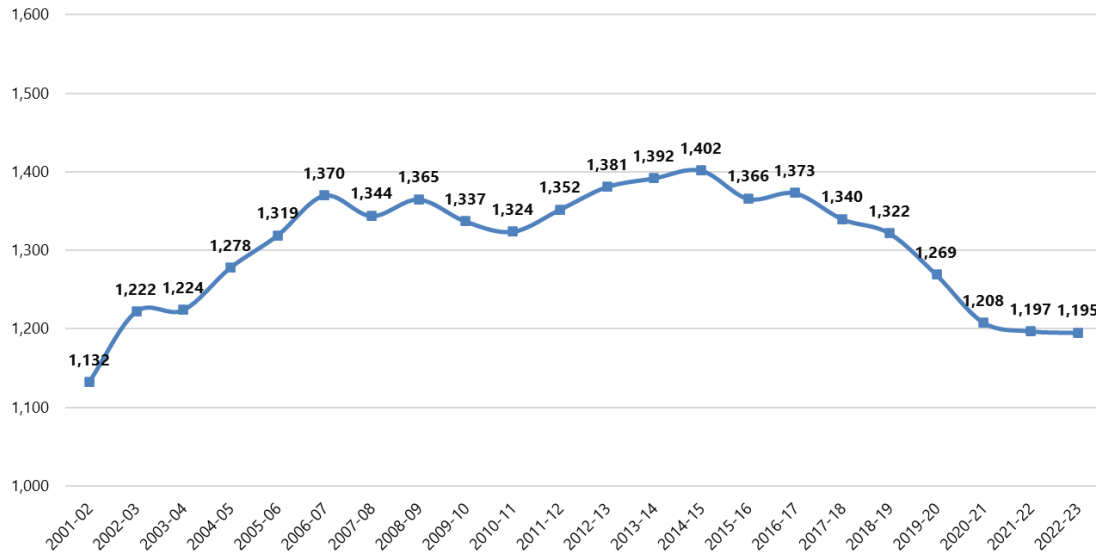
Westport Public Schools Historic K-5 Enrollment
(2001-02 to 2022-23)



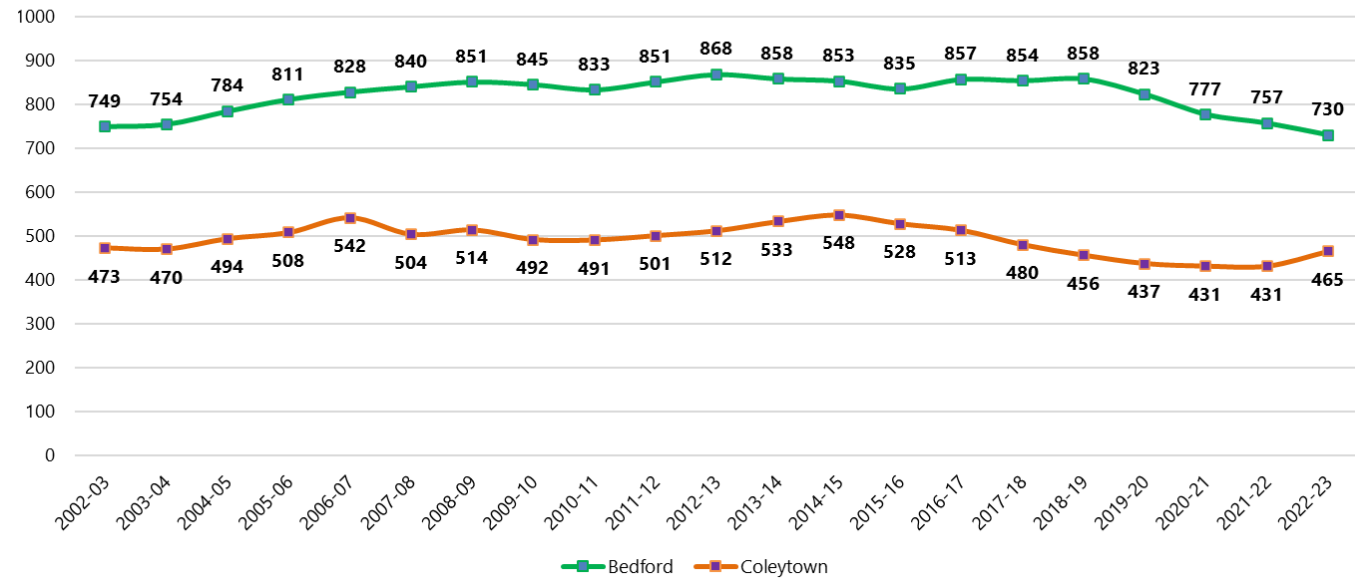


Middle School Historic Enrollments

Westport Public Schools Historic 6-8 Enrollment
(2001-02 to 2022-23)



Westport Middle (6-8) Enrollment by School
(2002-03 to 2022-23)



- 6-8 enrollment experienced historic peak in 2014-15 and has since decreased 14.8%; Enrollment flattened & decline slowed to only 2 students over the last year
- After a period of stability from 2018-19 to 2021-22, CMS enrollment increased by 34 students since last year
- Enrollment at Bedford has decreased consistently since peaking at 858 in 2017-18, reaching 730 students in 2022-23

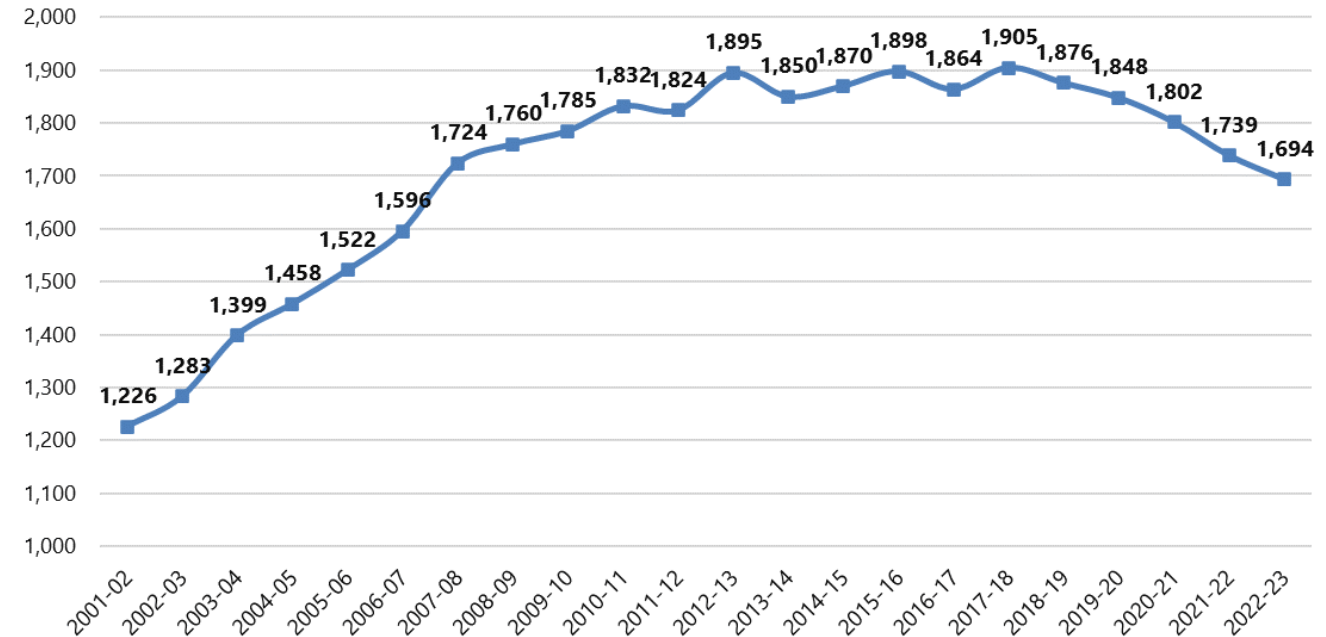
**2019-20 and 2020-21 enrollment data assigned to CMS or BMS based on address*



9-12 Historic Enrollments

- High school enrollment peaked at 1,905 students in 2017-18, and has since declined by 211 students or 11.1%
- Smaller 9th grade cohorts replacing larger graduating cohorts are contributing to continued enrollment decline at high school.
- Increased in-migration of 9th graders and net in-migration for 2022-23 helped slightly offset rate of decrease

**Westport Public Schools Historic 9-12 Enrollment
(2001-02 to 2022-23)**



Source: CT State Department of Education (2001-02 to 2021-22), Westport Public Schools
2022-23 enrollment excludes out of district students who attend non-WPS facilities



Enrollment Projections

Enrollment Projections



Projections Primer

- Based on Cohort Survival Methodology – Standard method accepted by the OSCG&R for school construction projects
- The cohort survival methodology **relies on observed data from the recent past in order to project the near future**
- Persistency Ratios calculated from historic enrollment data to determine growth or loss in a class as it progresses through the school system
- Persistency Ratio of 1.0 means cohort size remains the same; 1.05 means the cohort size increases by 5%, or a cohort of 100 grows to 105 the following year
- Persistency Ratios account for the various external factors affecting enrollments: housing characteristics, residential development, economic conditions, student transfers in and out of system, and student mobility
- Changes in population, housing stock and tenure, and economic conditions help explain persistency ratios
- Changes in programming affect persistency ratios of individual schools
- Recent impacts due to the pandemic adds variability to student migration, enrollment trends, housing market conditions, residential mobility and overall economic conditions and labor market.



Projections Assumptions

These projections are predicated on the following assumptions:

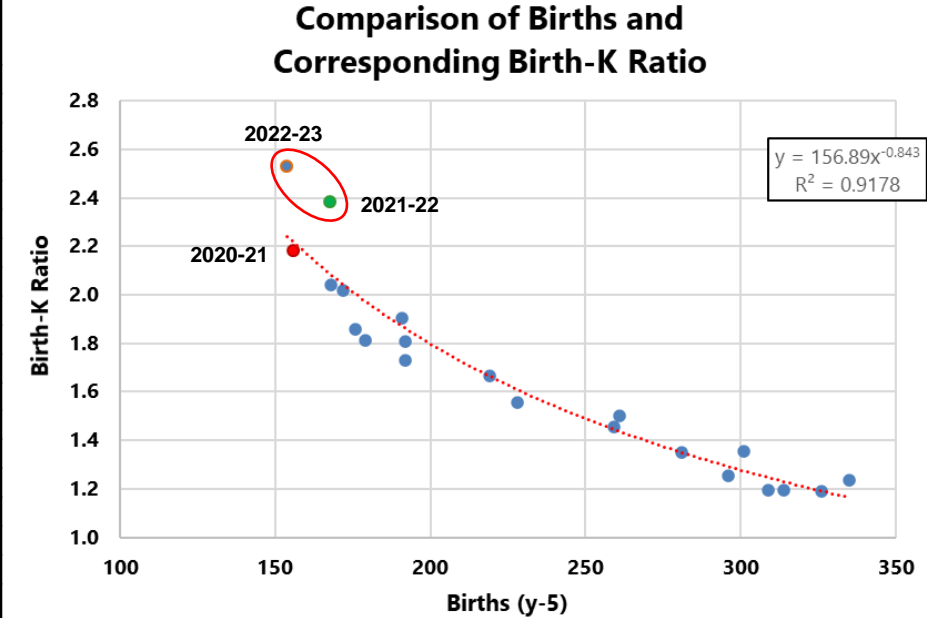
- Pre-K enrollment will average 72 students over the next decade
- Housing, student generation, and future birth assumptions at the districtwide level will prove accurate
- Housing Multipliers for developments have been applied locally to all projection models. The recent pace of new home construction will continue.
- Elevated Birth-K assumptions for the next two years tied to in-migration hold true, followed by a return to the historic variable Birth-K ratio starting in 2025-26.
- **High projections:** Assume high birth projections (average 224 annually) and housing sales will continue at elevated level for next 3-4 years; albeit not height of pandemic levels. Student in-migration averages 2.05 %, which is above 5-year and 10-year average of 1.70%
- **Medium projections:** Assume medium birth projections (average 213 annually) and current housing at elevated level for next 1-2 years, albeit not height of pandemic levels. Student in-migration averages 1.85%, which aligns with historic average
- **Low projections:** Assume low birth projections (average 197 annually) and housing activity slows to recent pre-pandemic historic levels and in-migration averages 1.04%, which is well below historic average



Persistency Ratios

Kindergarten through 12th Grade Persistency Ratios by School Year
2002-2003 to 2021-22

Year	Birth-K	K-1	1-2	2-3	3-4	4-5	5-6	6-7	7-8	8-9	9-10	10-11	11-12	Est. of Migration (1-7 / 2-8)
2002-03	1.1902	1.0574	0.9888	0.9931	0.9936	0.9834	0.9723	1.0202	1.0076	1.0234	0.9774	0.9696	0.9817	-0.6%
2003-04	1.1942	1.0619	0.9932	1.0090	0.9814	1.0000	1.0024	0.9810	0.9777	1.0176	0.9629	0.9942	0.9843	-0.8%
2004-05	1.1943	1.0732	1.0437	0.9909	0.9978	0.9763	1.0022	0.9688	0.9927	0.9797	0.9901	0.9703	1.0000	-0.4%
2005-06	1.2358	1.0667	1.0354	1.0186	1.0069	1.0157	1.0364	1.0323	1.0223	1.0244	1.0052	0.9800	0.9817	2.4%
2006-07	1.3488	1.0700	1.0375	1.0610	0.9909	1.0023	1.0199	0.9813	1.0208	0.9854	1.0143	0.9871	0.9694	1.6%
2007-08	1.2534	1.1029	1.0429	1.0169	1.0184	1.0092	1.0228	1.0065	1.0286	0.9959	1.0148	1.0188	1.0156	2.1%
2008-09	1.3555	1.1105	1.0287	1.0065	1.0261	0.9819	1.0251	0.9911	1.0151	1.0139	0.9918	0.9976	0.9862	1.0%
2009-10	1.4556	1.0539	0.9806	1.0279	0.9978	0.9723	1.0299	0.9889	1.0000	0.9894	0.9954	0.9793	0.9976	0.0%
2010-11	1.5019	1.0663	1.0256	1.0421	1.0452	0.9612	1.0356	0.9933	0.9977	1.0404	1.0021	0.9954	0.9895	1.3%
2011-12	1.5570	1.0204	1.0473	1.0023	1.0214	1.0238	1.0314	1.0000	1.0247	1.0474	0.9957	1.0086	0.9885	2.1%
2012-13	1.9058	1.0958	1.0525	1.0238	1.0249	1.0186	1.0127	1.0065	1.0069	1.0548	1.0151	1.0195	1.0042	2.0%
2013-14	1.6667	1.0632	1.0360	1.0333	1.0441	1.0221	1.0183	1.0104	0.9978	1.0068	0.9958	0.9894	0.9851	2.2%
2014-15	2.0417	1.0685	1.0543	1.0323	1.0322	0.9778	1.0108	0.9978	1.0103	1.0238	1.0000	1.0063	1.0150	1.5%
2015-16	1.8073	1.0087	1.0410	1.0270	1.0264	1.0134	1.0000	1.0043	1.0247	1.0082	1.0127	0.9910	1.0124	1.9%
2016-17	1.8580	1.0749	1.0434	1.0419	0.9881	1.0164	0.9890	1.0273	1.0021	1.0197	1.0000	0.9770	1.0000	1.4%
2017-18	1.7292	1.0612	1.0375	1.0249	1.0213	1.0121	1.0069	0.9956	1.0066	1.0191	0.9957	0.9939	1.0085	1.4%
2018-19	2.0174	1.0542	1.0317	1.0336	1.0108	1.0162	1.0286	0.9908	1.0223	1.0220	0.9958	0.9611	0.9959	1.9%
2019-20	1.8101	1.0231	1.0543	0.9721	1.0025	0.9626	0.9613	0.9559	1.0046	0.9847	1.0086	1.0021	1.0090	-1.4%
2020-21	2.1795	1.1080	1.0732	1.0867	1.0345	1.0249	1.0444	0.9716	1.0243	0.9931	0.9823	0.9744	0.9812	3.5%
2021-22	2.3810	1.1441	1.0306	1.0131	1.0324	1.0250	1.0268	0.9840	0.9878	0.9787	0.9769	0.9932	1.0153	1.4%
2022-23	2.5260	1.0600	1.0334	1.0216	1.0285	1.0290	1.0461	1.0237	1.0189	1.0296	0.9976	0.9882	1.0182	2.9%



Source: State Department of Education, Public School Information System (2001-2020), Westport Public Schools (2021-22) enrollments, and CT Department of Public Health (CT DPH) Birth Data.

- For 2022-23, net in-migration above historic levels at 2.9% - second highest level after 2020-21.
- Birth-K of 2.53 was the greatest over the last 20-years, leading to the second consecutive year with an abnormally large kindergarten cohorts



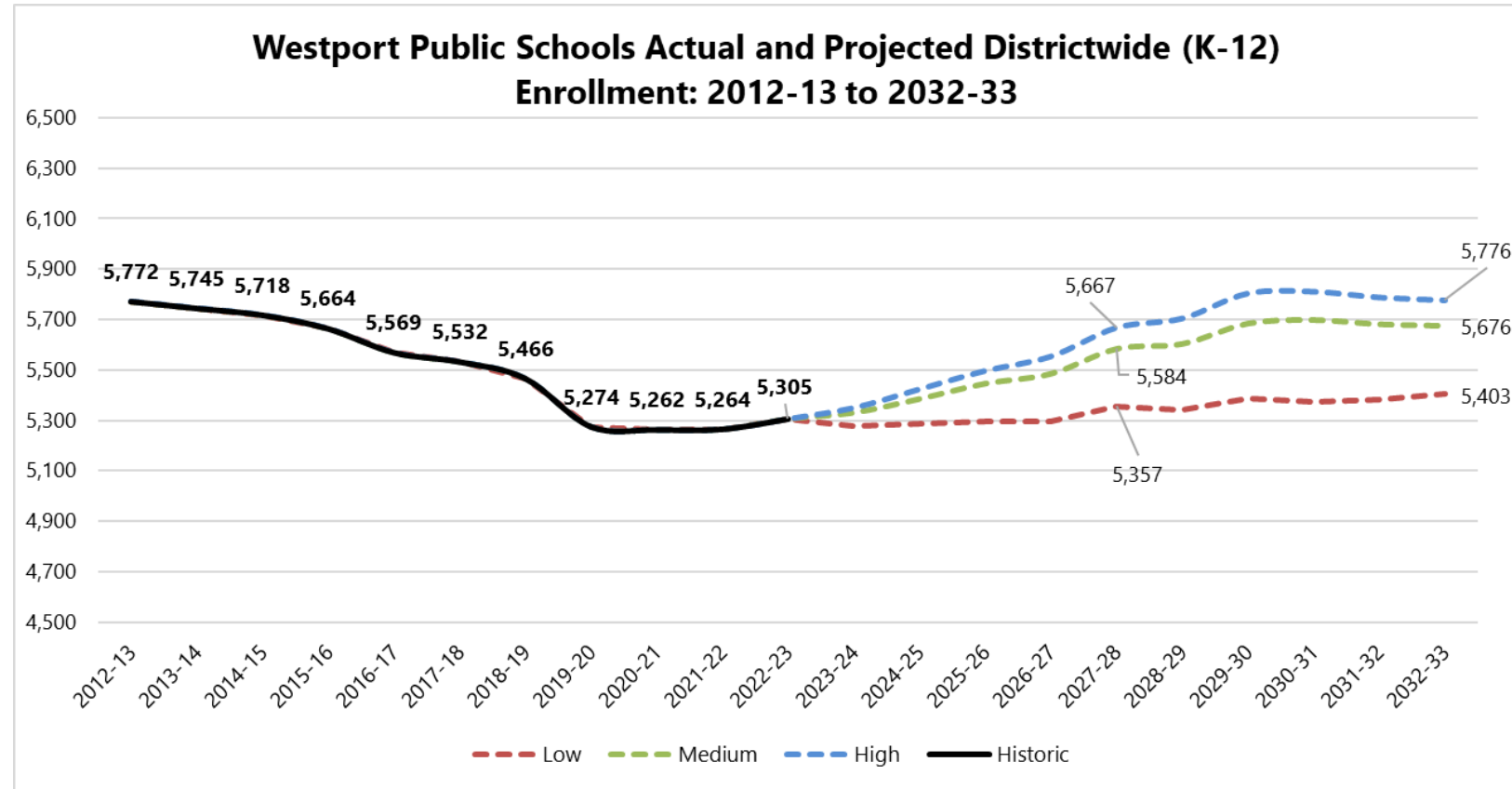
Kindergarten Projections

- Historically, variable Birth-K ratio was used to project enrollment based on a historic “best fit” line with R-squared value of ~0.97, excluding the last 2 years. However, this best fit line did not capture the elevated in-migration that WPS has seen over the last two years, resulting in consecutive large kindergarten classes.
- Kindergarten enrollment has corresponded well with the number of Westport resident 4- and 5-year-olds enrolled Pre-K programs (including private providers) the year prior.
 - Every 100 PK4 and PK5 year olds typically results in ~95 Kindergarteners the following year on average.
- If historic trend holds true, larger PK3 and PK4 cohorts enrolled this year will result in larger kindergarten classes over the next two years.
 - Kindergarten projections for 2023-24 and 2024-25 revised upwards to better align with corresponding PK cohorts.
- Current PK2 cohort is similar in size to pre-pandemic levels. Projections assume return to historic variable Birth-K ratio beginning in 2025-26.



Districtwide Projections

- Both the High and Medium Models agree, showing steady growth to 2029-30, whereas the low model is projecting flatter enrollment then slight growth
- By 2027-28, both High and Medium Models have a narrow band with enrollment ranging from 5,584-5,667 students
- Under the medium model, K-12 enrollment is projected to peak in 2030-31 at ~5,700 students, then stabilize
- Recent housing conditions, demographics and enrollment in-migration align best with Medium Model and represents the most likely direction. However, recent housing conditions and demographic shifts should be monitored.**

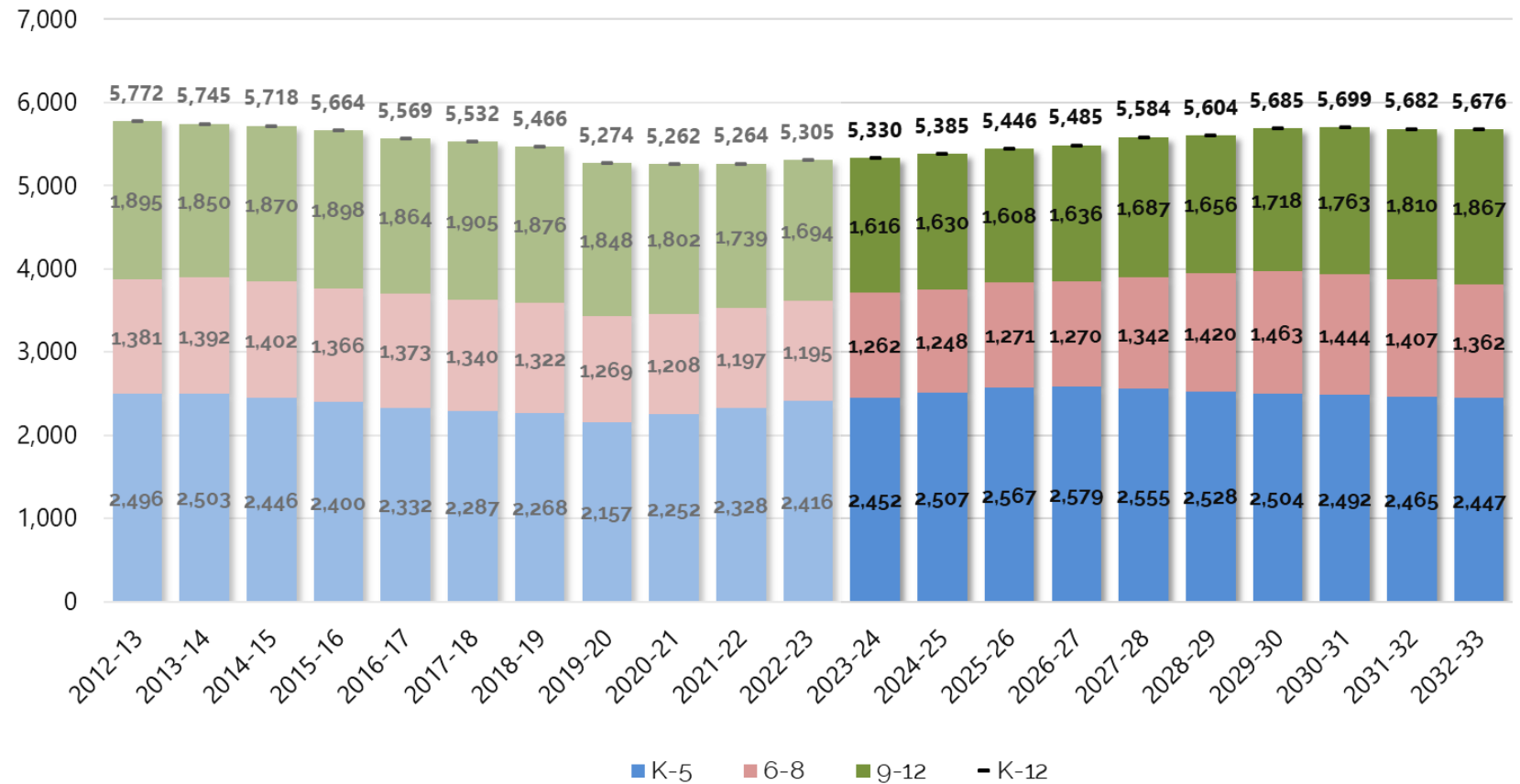




Districtwide Projections

- K-5 enrollment troughed in 2019-20 and has rebounded by ~12% since.
- K-5 enrollment is projected to continue to grow, peaking in 2026-27 at ~2,580 students; averaging 2,500 students over next decade
- 6-8 enrollment troughed in 2022-23, with moderate growth projected over the next decade; enrollment peaks in 2029-30 at ~1,460 students
- 9-12 enrollment is projected to trough in 2025-26 at ~1,600 students, followed by a period of projected growth

Historic and Projected K-12 Enrollment (Medium)
2012-13 to 2032-33





Elementary School Projections (Medium)

Actual & Projected ES Enrollments 2022-23 to 2032-33 (Medium)

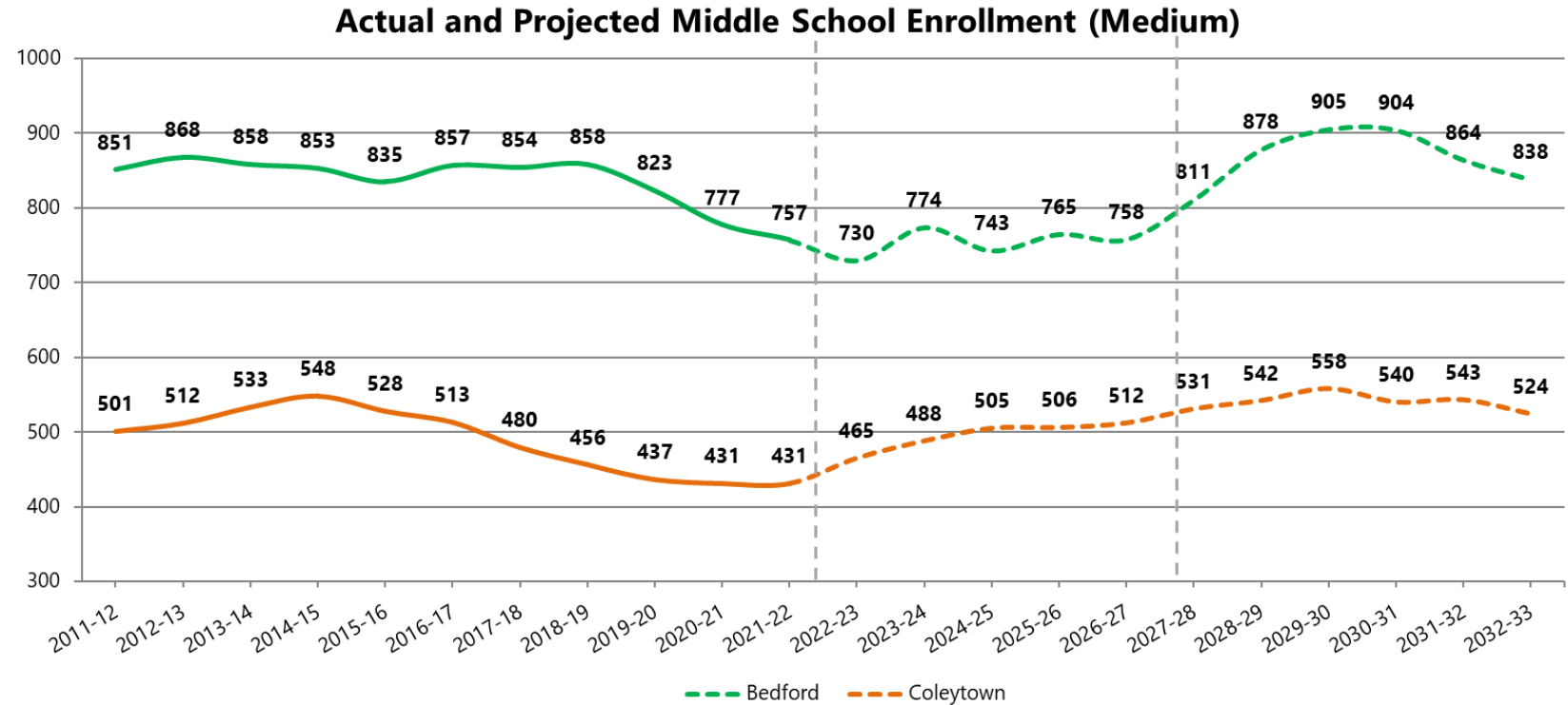
School	2022-23	2023-24	2024-25	2025-26	2026-27	2027-28	2028-29	2029-30	2030-31	2031-32	2032-33	First 5-Year % Change	10 year % Change
Coleytown	477	489	495	504	505	501	497	492	492	487	483	5.0%	1.3%
Greens Farms	459	479	486	498	491	484	480	474	473	469	464	5.4%	1.1%
Kings Highway	449	458	454	469	468	462	468	468	465	460	460	2.9%	2.4%
Long Lots	601	603	644	663	687	682	670	662	655	646	637	13.5%	6.0%
Saugatuck	430	423	428	433	428	426	413	408	407	403	403	-0.9%	-6.3%
K-5 Total	2,416	2,452	2,507	2,567	2,579	2,555	2,528	2,504	2,492	2,465	2,447	5.8%	1.3%

- Medium Model projects an increase at each elementary school, except Saugatuck, over the next ten years. However, trajectory of projections vary by school:
 - Long Lots is projected to have greatest growth in next 5-years, peaking in 2026-27 at 687 students
 - Coleytown is projected to grow by ~5 %, then average ~490 students
 - Greens Farm is projected to grow by over 5% in the first 5-years, peaking in 2025-26 at ~500 students
 - Saugatuck's enrollment is projected to be relatively stable the first 5-years, then decline by ~6%
 - Modest growth projected at King's Highway from approved Hiawatha Lane & Cross Street "The Westport Residences" are built, occupied and generate students



Middle School Projections (Medium)

- BMS is projected to average ~770 students the next 5-years
- BMS enrollment is projected to peak ~900 students from 2029-30 to 2030-31 due to successive “bubbles” of large 5th grade cohorts matriculating from Long Lots and Greens Farm
- CMS is projected to grow slowly and average ~508 for the first 5-years & ~541 for the last 5 projected years





Projection Takeaways

- Projections revised slightly upwards due to elevated housing market, in-migration rates and another large Kindergarten cohort
- Medium Projection Model reflects the most likely trajectory for future enrollment. However, recent changes to enrollment drivers from the pandemic bear watching. Should housing market activity continue for next several years at the elevated levels, the High Projection Model may prove more accurate in the long-term
- Overall K-12 enrollment is projected to increase by ~5% over the next five years, then growth slows for last 5-years; peaking in 2030-31 at ~5,700
- Elementary enrollments are projected to increase by ~6 % first 5-years, peaking in 2026-27 at ~2,580
- Largest growth at Long Lots (13.5%), Coleytown (5.0 %) and Greens Farms (5.4%) over next 5-years
- Middle school enrollment bottomed out in 2022-23, projected peak in 2029-30 at ~1,460 students
- CMS is projected to grow slowly, averaging 525 students over the next decade
- BMS is projected to experience continued growth, averaging 770 students the next 5-years, with enrollment "bubbles" pushing enrollment over ~900 towards end of 10-year projection horizon
- High school enrollment is projected to trough in 2025-26 at 1,608 students and then recover, reaching 1,867 students in 2032-33



10- Year Enrollment Projections (Update)

Appendix A Low, Medium & High Districtwide Projections



Appendix: Districtwide Projections Low

Low Districtwide Projections (Multipliers)

School Year	Birth Year	Low Births	K	1	2	3	4	5	6	7	8	9	10	11	12	PK	PK-12	K-12	K-5	6-8	9-12
2022-23	2017	154	389	424	402	378	397	426	386	432	377	417	412	417	448	63	5,368	5,305	2,416	1,195	1,694
2023-24	2018	153	387	415	439	408	382	398	438	380	432	374	410	401	414	72	5,350	5,278	2,429	1,250	1,599
2024-25	2019	148	376	414	430	447	414	384	410	432	381	429	368	400	400	72	5,357	5,285	2,465	1,223	1,597
2025-26	2020	197	368	402	429	437	453	416	396	404	433	379	422	359	399	72	5,369	5,297	2,505	1,233	1,559
2026-27	2021	213	366	393	416	435	442	454	428	389	404	429	372	411	357	72	5,368	5,296	2,506	1,221	1,569
2027-28	2022	221	370	391	407	423	441	444	468	422	390	403	423	364	411	72	5,429	5,357	2,476	1,280	1,601
2028-29	2023	194	362	395	404	413	428	442	457	460	422	388	396	412	362	72	5,413	5,341	2,444	1,339	1,558
2029-30	2024	199	363	387	409	411	419	430	456	450	461	420	382	387	411	72	5,458	5,386	2,419	1,367	1,600
2030-31	2025	199	363	388	400	415	416	420	442	448	450	459	413	372	385	72	5,443	5,371	2,402	1,340	1,629
2031-32	2026	197	362	388	401	406	420	417	432	435	448	448	451	403	370	72	5,453	5,381	2,394	1,315	1,672
2032-33	2027	198	362	387	401	407	411	421	429	425	435	446	440	439	400	72	5,475	5,403	2,389	1,289	1,725
1st 5-Year Change																	1.1%	1.0%	2.5%	7.1%	-5.5%
2nd 5-Year Change																	0.8%	0.9%	-3.5%	0.7%	7.7%
10-Year Change																	2.0%	1.8%	-1.1%	7.9%	1.8%



Appendix: Districtwide Projections Medium

Medium Districtwide Projections (Multipliers)

School Year	Birth Year	Medium Births	K	1	2	3	4	5	6	7	8	9	10	11	12	PK	PK-12	K-12	K-5	6-8	9-12
2022-23	2017	154	389	424	402	378	397	426	386	432	377	417	412	417	448	63	5,368	5,305	2,416	1,195	1,694
2023-24	2018	153	390	419	443	412	386	402	443	383	436	378	414	405	419	72	5,402	5,330	2,452	1,262	1,616
2024-25	2019	148	379	421	439	455	422	391	419	441	388	438	376	408	408	72	5,457	5,385	2,507	1,248	1,630
2025-26	2020	197	372	409	441	451	466	428	407	417	447	390	436	371	411	72	5,518	5,446	2,567	1,271	1,608
2026-27	2021	213	367	401	427	452	461	471	445	404	421	448	387	429	372	72	5,557	5,485	2,579	1,270	1,636
2027-28	2022	221	370	396	420	439	463	467	490	443	409	424	447	383	433	72	5,656	5,584	2,555	1,342	1,687
2028-29	2023	210	368	399	414	431	448	468	485	487	448	411	421	440	384	72	5,676	5,604	2,528	1,420	1,656
2029-30	2024	215	369	397	418	425	441	454	487	483	493	451	409	415	443	72	5,757	5,685	2,504	1,463	1,718
2030-31	2025	215	369	399	415	429	434	446	472	484	488	496	448	402	417	72	5,771	5,699	2,492	1,444	1,763
2031-32	2026	213	367	395	413	421	434	435	459	464	484	486	487	437	400	72	5,754	5,682	2,465	1,407	1,810
2032-33	2027	214	367	392	408	419	426	435	447	451	464	482	478	474	433	72	5,748	5,676	2,447	1,362	1,867
1st 5-Year Change																	5.4%	5.3%	5.8%	12.3%	-0.4%
2nd 5-Year Change																	1.6%	1.6%	-4.2%	1.5%	10.7%
10-Year Change																	7.1%	7.0%	1.3%	14.0%	10.2%



Appendix: Districtwide Projections High

High Districtwide Projections (Multipliers)

School Year	Birth Year	High Births	K	1	2	3	4	5	6	7	8	9	10	11	12	PK	PK-12	K-12	K-5	6-8	9-12
2022-23	2017	154	389	424	402	378	397	426	386	432	377	417	412	417	448	63	5,368	5,305	2,416	1,195	1,694
2023-24	2018	153	394	421	444	413	387	403	444	384	438	379	415	407	420	72	5,421	5,349	2,462	1,266	1,621
2024-25	2019	148	383	427	442	458	424	394	421	443	390	441	378	411	411	72	5,495	5,423	2,528	1,254	1,641
2025-26	2020	197	372	415	448	456	470	431	412	420	450	393	440	374	415	72	5,568	5,496	2,592	1,282	1,622
2026-27	2021	213	372	402	435	461	467	477	449	410	426	452	391	434	377	72	5,625	5,553	2,614	1,285	1,654
2027-28	2022	221	375	403	422	448	473	475	498	448	416	430	452	388	439	72	5,739	5,667	2,596	1,362	1,709
2028-29	2023	221	375	405	422	434	459	480	495	496	454	419	428	446	391	72	5,776	5,704	2,575	1,445	1,684
2029-30	2024	226	376	406	425	435	446	467	501	494	504	458	418	423	450	72	5,875	5,803	2,555	1,499	1,749
2030-31	2025	226	370	406	424	436	444	451	485	498	499	507	454	411	425	72	5,882	5,810	2,531	1,482	1,797
2031-32	2026	224	369	396	420	430	441	445	464	477	498	497	498	443	409	72	5,859	5,787	2,501	1,439	1,847
2032-33	2027	225	370	395	409	426	435	442	458	456	477	496	488	485	439	72	5,848	5,776	2,477	1,391	1,908
1st 5-Year Change																	6.9%	6.8%	7.5%	14.0%	0.9%
2nd 5-Year Change																	1.9%	1.9%	-4.6%	2.1%	11.6%
10-Year Change																	8.9%	8.9%	2.5%	16.4%	12.6%



10- Year Enrollment Projections (Update)

Appendix B Individual ES & MS School Projections



Appendix: ES (Low)

Westport Public Schools Elementary School Enrollment Projections 2023-24							
School	K	1	2	3	4	5	K-5th
Coleytown	76	78	89	81	78	82	484
Green's Farms	73	77	86	87	76	73	472
King's Highway	74	65	82	74	70	87	452
Long Lots	96	113	111	97	95	89	601
Saugatuck	68	82	71	69	63	67	420
TOTAL	387	415	439	408	382	398	2,429

Westport Public Schools Elementary School Enrollment Projections 2024-25							
School	K	1	2	3	4	5	K-5th
Coleytown	73	80	84	88	83	81	489
Green's Farms	72	78	79	89	89	73	480
King's Highway	74	77	65	88	74	71	449
Long Lots	92	105	119	113	99	96	624
Saugatuck	65	74	83	69	69	63	423
TOTAL	376	414	430	447	414	384	2,465

Westport Public Schools Elementary School Enrollment Projections 2025-26							
School	K	1	2	3	4	5	K-5th
Coleytown	72	78	86	83	90	86	495
Green's Farms	70	77	80	82	91	86	486
King's Highway	73	77	77	70	88	76	461
Long Lots	91	99	111	121	115	98	635
Saugatuck	62	71	75	81	69	70	428
TOTAL	368	402	429	437	453	416	2,505

Westport Public Schools Elementary School Enrollment Projections 2026-27							
School	K	1	2	3	4	5	K-5th
Coleytown	72	76	84	85	85	92	494
Green's Farms	70	75	79	83	84	88	479
King's Highway	69	75	76	81	69	89	459
Long Lots	95	99	105	113	123	116	651
Saugatuck	60	68	72	73	81	69	423
TOTAL	366	393	416	435	442	454	2,506

Westport Public Schools Elementary School Enrollment Projections 2027-28							
School	K	1	2	3	4	5	K-5th
Coleytown	71	76	82	83	87	88	487
Green's Farms	69	75	77	82	85	81	469
King's Highway	73	71	75	81	81	70	451
Long Lots	94	103	104	107	115	124	647
Saugatuck	63	66	69	70	73	81	422
TOTAL	370	391	407	423	441	444	2,476

Westport Public Schools Elementary School Enrollment Projections 2028-29							
School	K	1	2	3	4	5	K-5th
Coleytown	71	76	81	81	84	90	483
Green's Farms	69	75	77	80	83	82	466
King's Highway	72	75	70	79	80	81	457
Long Lots	88	101	109	106	111	116	631
Saugatuck	62	68	67	67	70	73	407
TOTAL	362	395	404	413	428	442	2,444

Westport Public Schools Elementary School Enrollment Projections 2029-30							
School	K	1	2	3	4	5	K-5th
Coleytown	71	75	82	80	82	87	477
Green's Farms	69	74	76	79	81	81	460
King's Highway	71	74	75	75	79	81	455
Long Lots	90	95	107	112	110	111	625
Saugatuck	62	69	69	65	67	70	402
TOTAL	363	387	409	411	419	430	2,419

Westport Public Schools Elementary School Enrollment Projections 2030-31							
School	K	1	2	3	4	5	K-5th
Coleytown	71	75	81	82	82	85	476
Green's Farms	69	74	76	78	81	79	457
King's Highway	72	73	73	78	74	79	449
Long Lots	89	98	100	109	114	109	619
Saugatuck	62	68	70	68	65	68	401
TOTAL	363	388	400	415	416	420	2,402

Westport Public Schools Elementary School Enrollment Projections 2031-32							
School	K	1	2	3	4	5	K-5th
Coleytown	71	75	81	80	83	85	475
Green's Farms	69	74	76	79	80	78	456
King's Highway	73	74	72	77	77	74	447
Long Lots	86	97	103	102	112	115	615
Saugatuck	63	68	69	68	68	65	401
TOTAL	362	388	401	406	420	417	2,394

Westport Public Schools Elementary School Enrollment Projections 2032-33							
School	K	1	2	3	4	5	K-5th
Coleytown	70	75	81	80	82	87	475
Green's Farms	68	74	75	79	81	77	454
King's Highway	72	75	73	76	76	77	449
Long Lots	90	93	103	105	104	112	607
Saugatuck	62	70	69	67	68	68	404
TOTAL	362	387	401	407	411	421	2,389



Appendix: ES (Medium)

Westport Public Schools Elementary School Enrollment Projections 2023-24							
School	K	1	2	3	4	5	K-5th
Coleytown	77	79	90	82	78	83	489
Green's Farms	75	78	87	88	77	74	479
King's Highway	75	66	83	75	71	88	458
Long Lots	97	113	111	97	96	89	603
Saugatuck	66	83	72	70	64	68	423
TOTAL	390	419	443	412	386	402	2,452

Westport Public Schools Elementary School Enrollment Projections 2026-27							
School	K	1	2	3	4	5	K-5th
Coleytown	72	77	83	89	88	96	505
Green's Farms	70	77	78	88	87	91	491
King's Highway	69	76	75	84	72	92	468
Long Lots	96	104	119	118	130	120	687
Saugatuck	60	67	72	73	84	72	428
TOTAL	367	401	427	452	461	471	2,579

Westport Public Schools Elementary School Enrollment Projections 2029-30							
School	K	1	2	3	4	5	K-5th
Coleytown	71	76	86	83	87	89	492
Green's Farms	69	75	79	82	86	83	474
King's Highway	73	76	77	77	82	83	468
Long Lots	94	101	108	116	117	126	662
Saugatuck	62	69	68	67	69	73	408
TOTAL	369	397	418	425	441	454	2,504

Westport Public Schools Elementary School Enrollment Projections 2032-33							
School	K	1	2	3	4	5	K-5th
Coleytown	71	76	81	81	83	91	483
Green's Farms	69	75	76	80	82	82	464
King's Highway	73	76	74	79	78	80	460
Long Lots	92	98	108	111	114	114	637
Saugatuck	62	67	69	68	69	68	403
TOTAL	367	392	408	419	426	435	2,447

Westport Public Schools Elementary School Enrollment Projections 2024-25							
School	K	1	2	3	4	5	K-5th
Coleytown	72	81	86	89	85	82	495
Green's Farms	70	81	81	90	90	74	486
King's Highway	72	78	67	89	76	72	454
Long Lots	101	109	120	116	100	98	644
Saugatuck	64	72	85	71	71	65	428
TOTAL	379	421	439	455	422	391	2,507

Westport Public Schools Elementary School Enrollment Projections 2027-28							
School	K	1	2	3	4	5	K-5th
Coleytown	73	77	84	83	92	92	501
Green's Farms	71	76	79	82	91	85	484
King's Highway	74	72	77	81	85	73	462
Long Lots	92	104	111	122	121	132	682
Saugatuck	60	67	69	71	74	85	426
TOTAL	370	396	420	439	463	467	2,555

Westport Public Schools Elementary School Enrollment Projections 2030-31							
School	K	1	2	3	4	5	K-5th
Coleytown	71	76	83	86	86	90	492
Green's Farms	69	75	77	83	85	84	473
King's Highway	73	76	75	81	77	83	465
Long Lots	94	103	109	112	118	119	655
Saugatuck	62	69	71	67	68	70	407
TOTAL	369	399	415	429	434	446	2,492

Westport Public Schools Elementary School Enrollment Projections 2025-26							
School	K	1	2	3	4	5	K-5th
Coleytown	72	77	89	86	92	88	504
Green's Farms	71	76	84	85	93	89	498
King's Highway	74	76	79	72	90	78	469
Long Lots	94	109	115	124	120	101	663
Saugatuck	61	71	74	84	71	72	433
TOTAL	372	409	441	451	466	428	2,567

Westport Public Schools Elementary School Enrollment Projections 2028-29							
School	K	1	2	3	4	5	K-5th
Coleytown	71	78	83	84	86	95	497
Green's Farms	69	77	78	83	85	88	480
King's Highway	73	76	72	81	81	85	468
Long Lots	92	102	112	115	124	125	670
Saugatuck	63	66	69	68	72	75	413
TOTAL	368	399	414	431	448	468	2,528

Westport Public Schools Elementary School Enrollment Projections 2031-32							
School	K	1	2	3	4	5	K-5th
Coleytown	72	75	82	82	87	89	487
Green's Farms	70	74	77	81	85	82	469
King's Highway	74	75	75	79	80	77	460
Long Lots	90	103	109	110	115	119	646
Saugatuck	61	68	70	69	67	68	403
TOTAL	367	395	413	421	434	435	2,465



Appendix: ES (High)

Westport Public Schools Elementary School Enrollment Projections 2023-24							
School	K	1	2	3	4	5	K-5th
Coleytown	78	79	90	82	79	83	491
Green's Farms	76	78	87	88	77	74	480
King's Highway	77	66	83	75	71	88	460
Long Lots	97	115	112	98	96	90	608
Saugatuck	66	83	72	70	64	68	423
TOTAL	394	421	444	413	387	403	2,462

Westport Public Schools Elementary School Enrollment Projections 2024-25							
School	K	1	2	3	4	5	K-5th
Coleytown	73	83	86	90	85	83	500
Green's Farms	71	83	81	91	91	75	492
King's Highway	73	81	67	90	76	73	460
Long Lots	101	107	123	116	101	98	646
Saugatuck	65	73	85	71	71	65	430
TOTAL	383	427	442	458	424	394	2,528

Westport Public Schools Elementary School Enrollment Projections 2025-26							
School	K	1	2	3	4	5	K-5th
Coleytown	72	78	90	87	93	89	509
Green's Farms	71	77	86	86	94	89	503
King's Highway	74	77	82	72	91	78	474
Long Lots	94	111	115	126	120	103	669
Saugatuck	61	72	75	85	72	72	437
TOTAL	372	415	448	456	470	431	2,592

Westport Public Schools Elementary School Enrollment Projections 2026-27							
School	K	1	2	3	4	5	K-5th
Coleytown	73	77	85	91	90	97	513
Green's Farms	71	77	80	90	89	92	499
King's Highway	70	76	77	87	72	93	475
Long Lots	97	104	119	119	130	122	691
Saugatuck	61	68	74	74	86	73	436
TOTAL	372	402	435	461	467	477	2,614

Westport Public Schools Elementary School Enrollment Projections 2027-28							
School	K	1	2	3	4	5	K-5th
Coleytown	74	78	85	85	94	94	510
Green's Farms	72	77	80	84	93	87	493
King's Highway	75	73	77	83	88	75	471
Long Lots	93	107	111	123	123	132	689
Saugatuck	61	68	69	73	75	87	433
TOTAL	375	403	422	448	473	475	2,596

Westport Public Schools Elementary School Enrollment Projections 2028-29							
School	K	1	2	3	4	5	K-5th
Coleytown	72	80	85	85	88	98	508
Green's Farms	70	78	80	84	87	91	490
King's Highway	74	77	73	82	83	89	478
Long Lots	94	103	114	114	127	126	678
Saugatuck	65	67	70	69	74	76	421
TOTAL	375	405	422	434	459	480	2,575

Westport Public Schools Elementary School Enrollment Projections 2029-30							
School	K	1	2	3	4	5	K-5th
Coleytown	74	77	87	85	88	92	503
Green's Farms	72	76	80	84	87	85	484
King's Highway	73	78	78	79	83	85	476
Long Lots	93	103	111	118	118	130	673
Saugatuck	64	72	69	69	70	75	419
TOTAL	376	406	425	435	446	467	2,555

Westport Public Schools Elementary School Enrollment Projections 2030-31							
School	K	1	2	3	4	5	K-5th
Coleytown	74	79	83	87	88	91	502
Green's Farms	72	78	79	85	87	85	486
King's Highway	73	76	78	82	79	84	472
Long Lots	89	102	110	114	120	121	656
Saugatuck	62	71	74	68	70	70	415
TOTAL	370	406	424	436	444	451	2,531

Westport Public Schools Elementary School Enrollment Projections 2031-32							
School	K	1	2	3	4	5	K-5th
Coleytown	73	79	85	83	89	91	500
Green's Farms	71	77	80	81	87	84	480
King's Highway	73	75	75	81	81	79	464
Long Lots	89	97	108	114	116	121	645
Saugatuck	63	68	72	71	68	70	412
TOTAL	369	396	420	430	441	445	2,501

Westport Public Schools Elementary School Enrollment Projections 2032-33							
School	K	1	2	3	4	5	K-5th
Coleytown	73	76	84	85	84	92	494
Green's Farms	71	76	79	83	83	84	476
King's Highway	73	77	74	79	80	81	464
Long Lots	89	97	103	109	116	116	630
Saugatuck	64	69	69	70	72	69	413
TOTAL	370	395	409	426	435	442	2,477



Appendix: MS (Low)

Westport Public Schools Middle School Enrollment 2023-24				
School	6	7	8	6-8th
Bedford	277	221	269	767
Coleytown	161	159	163	483
TOTAL	438	380	432	1,250

Westport Public Schools Middle School Enrollment 2024-25				
School	6	7	8	6-8th
Bedford	237	271	220	728
Coleytown	173	161	161	495
TOTAL	410	432	381	1,223

Westport Public Schools Middle School Enrollment 2025-26				
School	6	7	8	6-8th
Bedford	240	232	270	742
Coleytown	156	172	163	491
TOTAL	396	404	433	1,233

Westport Public Schools Middle School Enrollment 2026-27				
School	6	7	8	6-8th
Bedford	262	234	230	726
Coleytown	166	155	174	495
TOTAL	428	389	404	1,221

Westport Public Schools Middle School Enrollment 2027-28				
School	6	7	8	6-8th
Bedford	283	257	233	773
Coleytown	185	165	157	507
TOTAL	468	422	390	1,280

Westport Public Schools Middle School Enrollment 2028-29				
School	6	7	8	6-8th
Bedford	295	276	255	826
Coleytown	162	184	167	513
TOTAL	457	460	422	1,339

Westport Public Schools Middle School Enrollment 2029-30				
School	6	7	8	6-8th
Bedford	281	289	274	844
Coleytown	175	161	187	523
TOTAL	456	450	461	1,367

Westport Public Schools Middle School Enrollment 2030-31				
School	6	7	8	6-8th
Bedford	270	274	287	831
Coleytown	172	174	163	509
TOTAL	442	448	450	1,340

Westport Public Schools Middle School Enrollment 2031-32				
School	6	7	8	6-8th
Bedford	264	264	272	800
Coleytown	168	171	176	515
TOTAL	432	435	448	1,315

Westport Public Schools Middle School Enrollment 2032-33				
School	6	7	8	6-8th
Bedford	266	258	263	787
Coleytown	163	167	172	502
TOTAL	429	425	435	1,289



Appendix: MS (Medium)

Westport Public Schools Middle School Enrollment 2023-24				
School	6	7	8	6-8th
Bedford	280	223	271	774
Coleytown	163	160	165	488
TOTAL	443	383	436	1,262

Westport Public Schools Middle School Enrollment 2024-25				
School	6	7	8	6-8th
Bedford	242	277	224	743
Coleytown	177	164	164	505
TOTAL	419	441	388	1,248

Westport Public Schools Middle School Enrollment 2025-26				
School	6	7	8	6-8th
Bedford	247	239	279	765
Coleytown	160	178	168	506
TOTAL	407	417	447	1,271

Westport Public Schools Middle School Enrollment 2026-27				
School	6	7	8	6-8th
Bedford	274	244	240	758
Coleytown	171	160	181	512
TOTAL	445	404	421	1,270

Westport Public Schools Middle School Enrollment 2027-28				
School	6	7	8	6-8th
Bedford	296	270	245	811
Coleytown	194	173	164	531
TOTAL	490	443	409	1,342

Westport Public Schools Middle School Enrollment 2028-29				
School	6	7	8	6-8th
Bedford	315	291	272	878
Coleytown	170	196	176	542
TOTAL	485	487	448	1,420

Westport Public Schools Middle School Enrollment 2029-30				
School	6	7	8	6-8th
Bedford	301	311	293	905
Coleytown	186	172	200	558
TOTAL	487	483	493	1,463

Westport Public Schools Middle School Enrollment 2030-31				
School	6	7	8	6-8th
Bedford	294	297	313	904
Coleytown	178	187	175	540
TOTAL	472	484	488	1,444

Westport Public Schools Middle School Enrollment 2031-32				
School	6	7	8	6-8th
Bedford	282	287	295	864
Coleytown	177	177	189	543
TOTAL	459	464	484	1,407

Westport Public Schools Middle School Enrollment 2032-33				
School	6	7	8	6-8th
Bedford	277	275	286	838
Coleytown	170	176	178	524
TOTAL	447	451	464	1,362



Appendix: MS (High)

Westport Public Schools Middle School Enrollment 2023-24				
School	6	7	8	6-8th
Bedford	280	223	272	775
Coleytown	164	161	166	491
TOTAL	444	384	438	1,266

Westport Public Schools Middle School Enrollment 2024-25				
School	6	7	8	6-8th
Bedford	243	278	225	746
Coleytown	178	165	165	508
TOTAL	421	443	390	1,254

Westport Public Schools Middle School Enrollment 2025-26				
School	6	7	8	6-8th
Bedford	250	241	281	772
Coleytown	162	179	169	510
TOTAL	412	420	450	1,282

Westport Public Schools Middle School Enrollment 2026-27				
School	6	7	8	6-8th
Bedford	276	246	243	765
Coleytown	173	164	183	520
TOTAL	449	410	426	1,285

Westport Public Schools Middle School Enrollment 2027-28				
School	6	7	8	6-8th
Bedford	301	274	249	824
Coleytown	197	174	167	538
TOTAL	498	448	416	1,362

Westport Public Schools Middle School Enrollment 2028-29				
School	6	7	8	6-8th
Bedford	320	297	276	893
Coleytown	175	199	178	552
TOTAL	495	496	454	1,445

Westport Public Schools Middle School Enrollment 2029-30				
School	6	7	8	6-8th
Bedford	307	317	299	923
Coleytown	194	177	205	576
TOTAL	501	494	504	1,499

Westport Public Schools Middle School Enrollment 2030-31				
School	6	7	8	6-8th
Bedford	303	303	319	925
Coleytown	182	195	180	557
TOTAL	485	498	499	1,482

Westport Public Schools Middle School Enrollment 2031-32				
School	6	7	8	6-8th
Bedford	285	295	300	880
Coleytown	179	182	198	559
TOTAL	464	477	498	1,439

Westport Public Schools Middle School Enrollment 2032-33				
School	6	7	8	6-8th
Bedford	284	278	293	855
Coleytown	174	178	184	536
TOTAL	458	456	477	1,391